

West Oakland Truck Management Plan

COMMUNITY WORKSHOP #3
SATURDAY, APRIL 7, 2018



CITY OF OAKLAND



PORT OF OAKLAND

Introductions

Surlene Grant

Envirocom Communications Strategies, LLC

Port Team Members

- ❖ Laura Arreola
- ❖ Ramona Dixon
- ❖ Luana Espana
- ❖ Andrea Gardner
- ❖ Ralph Reynoso

City of Oakland Team Members

- ❖ Patricia McGowan
- ❖ William Gilchrist

Transportation Consultant - Kittelson & Associates

- ❖ Aaron Elias, Kittelson
- ❖ Alexander Garbier, Kittelson



CITY OF OAKLAND



PORT OF OAKLAND

Community Workshop #3 Agenda

- Introductions
- Purpose of Meeting
- Overview and Update of the TMP Process
- Presentation of Findings to Date
- Information Stations
- Reassemble and Sharing
- Adjourn



What is this Truck Management Plan?

City and Port plan to address truck circulation and truck parking in West Oakland.

Reflects and incorporates community input.

Identifies actions and responsibilities across City departments and Port.



What area will the TMP cover?



PLANNING AREA



What do we want the Plan to accomplish?

Quality of Life

- We want trucks to be less disruptive to the residents and businesses in West Oakland

Communication

- We want truck drivers to know where they can and cannot drive; and what the parking controls are

Safety

- We want it to be safer near the truck routes



Some Accomplishments to Date

- North American 3PL Centralized Customs Examination Station (CES) closed on 11/20/17; now done at Bobac CFS, Alameda.
- Three Rivers Trucking moved out of Prescott location, near Raimondi Park, to High Street location in Oakland.
- City enforcement action and lawsuit is underway against Santos for illegal operations at 2850 Poplar St.
- City is working with CASS and CWS to relocate to the OAB.
- Port has implemented night gates and appointment systems.
- The Port of Oakland has temporarily increased truck parking.
- TraPac Terminal expanded by 57 acres and built new gates so trucks will queue on-site, not on Maritime St.



Where we are in the Process



What did we hear in Community Workshops 1 and 2?



CITY OF OAKLAND



PORT OF OAKLAND

Summary of Public Input

- Approx. 250 individual comments noted
- We documented input in Excel table - example:

Comment/Feedback	Source	Category
Lack or no response on truck complaints	Mtg1-Flip Chart	Enforcement
West Oakland Plan has Peralta as a pedestrian street - conflicts with truck route	Mtg1-Flip Chart	Land Use/Conflicts
"Jake" brakes on trucks are very loud	Mtg1-Flip Chart	Noise
Truckers don't want to pay truck parking fees at Port	Mtg1-Flip Chart	Parking
Signage old, unmarked or non-existent	Mtg1-Flip Chart	Signage
Trucks have been going on 28th & Union (east, west and south)	Mtg1-Map	Prohibited Streets
Trucks line up and idle on Frontage Road (between 7th & 11 th)	Mtg1-Map	Truck Queuing and Idling
Potholes and sinkholes from trucks	Mtg2-AG	Damage to Roadways/Sidewalks
Visual cues are very effective at reducing truck traffic	Mtg2-PM	Truck Routes

We Sorted Comments by Categories

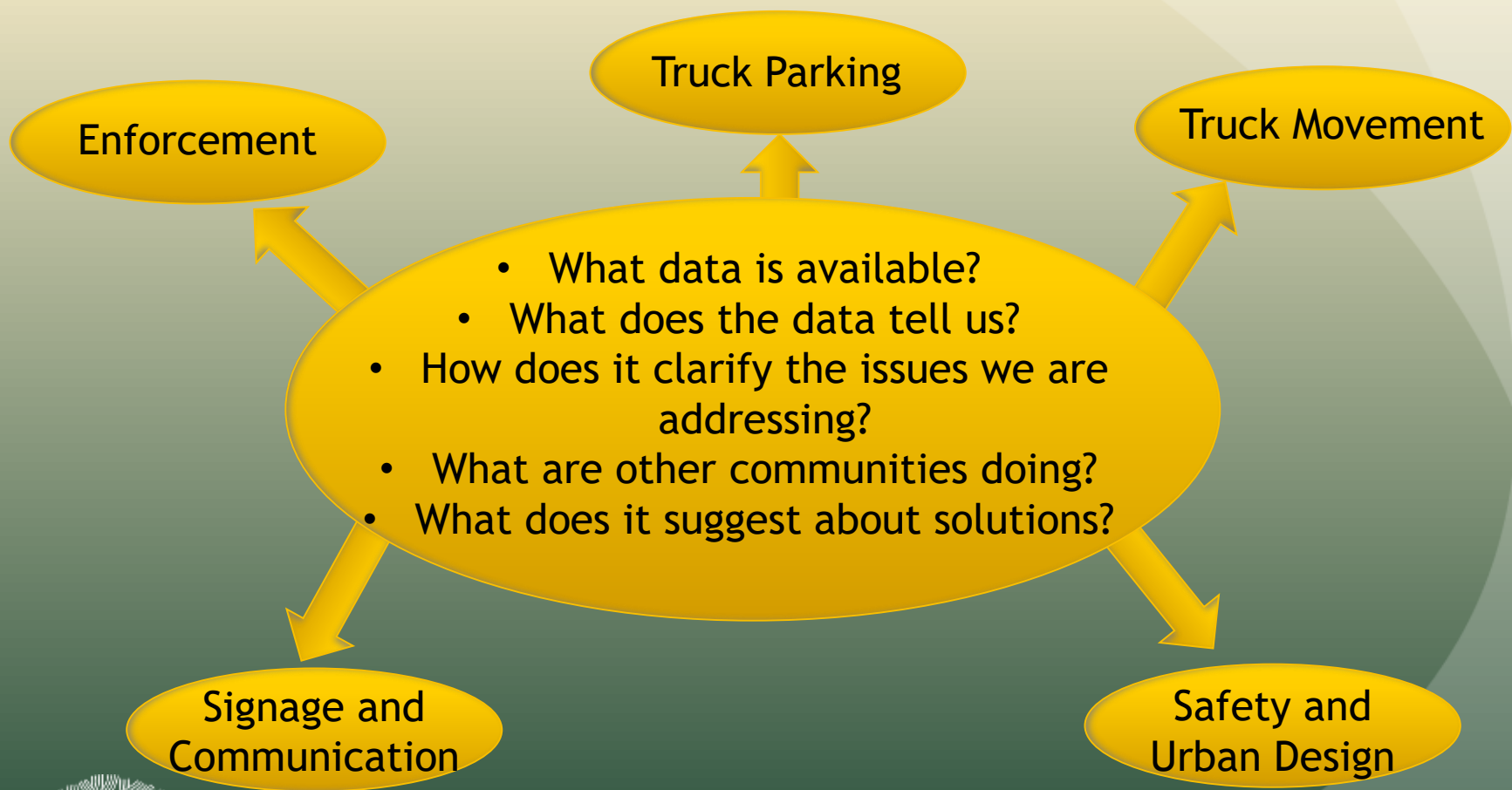
Category	No. of Comments
Air Quality	15
Alternative Fuels/EV	2
Damage to Roadways/Sidewalks	6
Enforcement	20
Land Use/Conflicts	21
Noise	5
Other	22
Parking	34
Positive Neighborhood Features	32
Prohibited Streets	11
Safety	3
Signage	19
Truck Businesses and Services	22
Truck Queuing and Idling	15
Truck Routes	19
Trucker Training and Outreach	3
Urban Design	3



We Grouped Categories into High Level Tasks to Begin Analysis

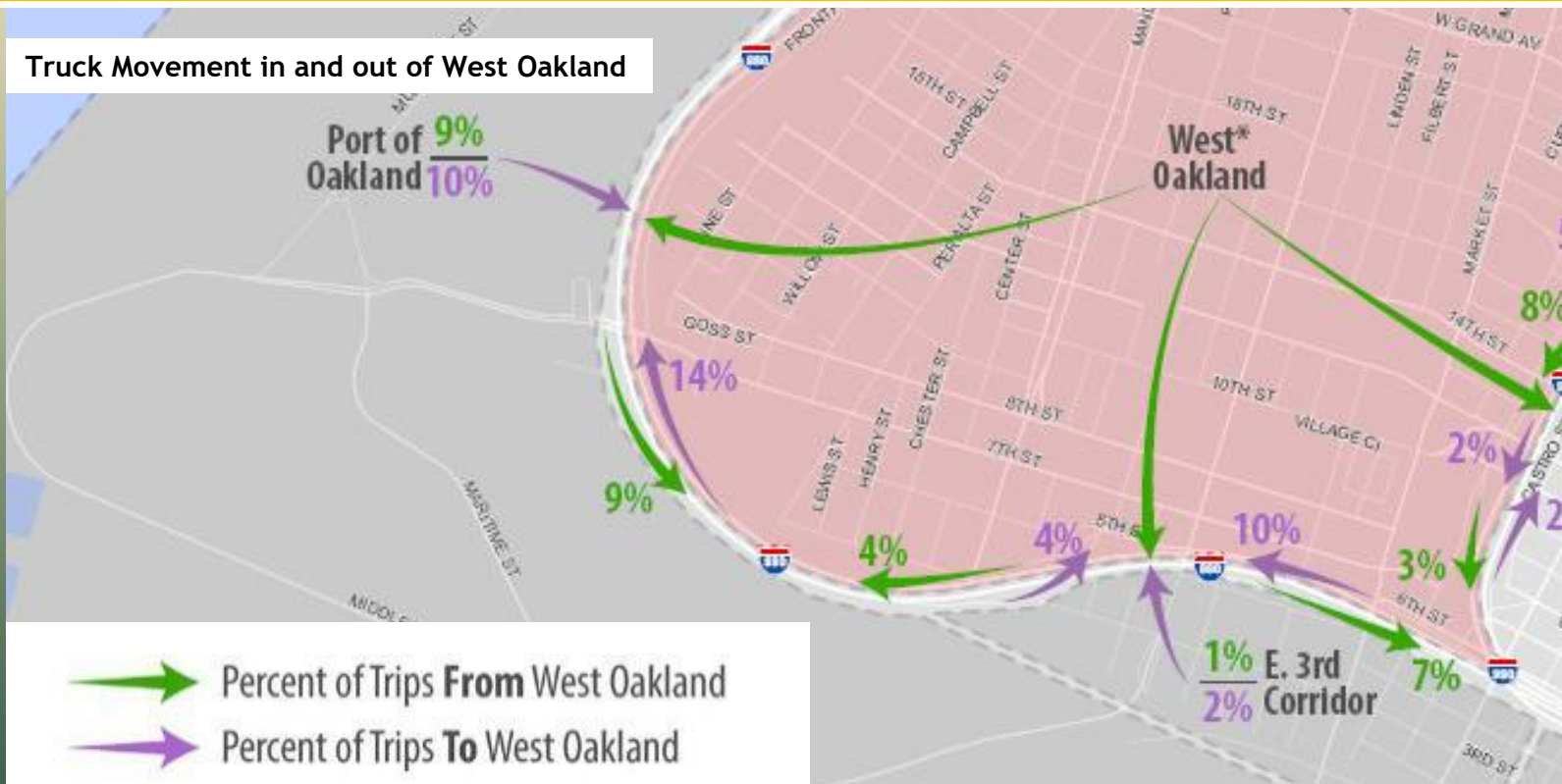
Work Plan Task	Categories Included
Enforcement	Enforcement
Truck Parking	Parking
Truck Movement	Prohibited Streets, Truck Businesses and Services, Truck Routes
Signage and Communication	Signage, Truck Businesses & Services, Truck Routes, Trucker Training and Outreach
Safety and Urban Design	Damage to Roadways/Sidewalks, Land Use/Conflicts, Safety, Truck Routes, Urban Design
Other Related Information	Categories to be incorporated in parallel efforts: Air Quality, Alternative Fuels/EV, Noise, Truck Businesses and Services, Truck Queuing and Idling, Other (e.g. affordable housing, BART parking)
Positive Features	Positive Neighborhood Features

We Used These Questions to Frame Data Gathering & Analysis



How We Analyzed Truck Movement

Data Source: Commercial truck GPS travel data collected by fleet management software and organized by third-party data company called StreetLight Data.



Information Stations

- Visit individual stations to learn about our analysis to date, ask questions, and provide input
 - What We Heard
 - Enforcement
 - Parking
 - Truck Movement
 - Signage and Communication
 - Safety and Urban Design
 - Other Related Information - Land Use and Air Quality



Regroup and Feedback

- Brief group discussion and feedback
 - What new information did you learn, if any?
 - Which station did you find most helpful to addressing the truck issues you encounter?
 - Is there additional analysis you would recommend for the team?



Upcoming Workshops

Workshop 4 - Co-Creating - TBD in June, 2018

- Refine input with technical information
- Prioritize solutions

Workshop 5 - Joining Together - Summer 2018

- Here's the Plan!
- *Review of the plan prior to approval*

West Oakland Environmental Indicators Project Air Quality Workshop

Saturday, April 21, 2018, 10am-4pm

Lincoln Child Center

1266 14th Street, Oakland, CA 94607



CITY OF OAKLAND



PORT OF OAKLAND

Thank you!

We look forward to seeing you in June!

Check back with us on the date for Community
Workshop #4.



CITY OF OAKLAND



PORT OF OAKLAND