

# In the kitchen

**Clogged sink drains can ruin your home, too. Keep all sinks in your home clog-free by following these simple steps:**

- Put fruit and vegetable stickers in the trash, not the drain.
- Put small amounts of fats, oils and grease (FOG) into your kitchen composting bin or place into a lidded, disposable container/can and dispose of in the garbage. Never put FOG down your sink drains or toilet.



- Wipe down greasy pots, pans or dishes with a paper towel before washing. Dispose of paper in your kitchen composting bin or in the garbage.

- Order a FREE FOG scraper from EBMUD. Visit [www.ebmud.com/fog](http://www.ebmud.com/fog) or call (510) 287-1651.
- To recycle larger amounts of your used cooking oil, find free, convenient drop-off locations at: [www.ebmud.com/fog](http://www.ebmud.com/fog).

## Properly dispose of your hazardous waste

Common household products become hazardous waste when poured down a drain or flushed down a toilet because they may harm our environment and wreck sewers.

Never dump paint, paint thinner, cleaning chemicals, pesticides, fertilizer, root killer or any product marked CAUTION-WARNING-DANGER-POISON. Instead, bring these materials to your local hazardous waste facility.



EBMUD has a proud history of providing high-quality drinking water for 1.3 million customers in Alameda and Contra Costa counties. The District's award-winning wastewater treatment protects San Francisco Bay and serves 650,000 customers.

Find additional pollution prevention information and environmentally-friendly tips on how to protect your sewer pipes and help the environment at [www.ebmud.com/cleanbay](http://www.ebmud.com/cleanbay) or contact the EBMUD Environmental Services Hotline at 510-287-1651.



### EBMUD

375 11th Street  
Oakland, CA 94607-4240  
866-403-2683  
[www.ebmud.com](http://www.ebmud.com)

# THINK BEFORE YOU FLUSH



**Protect Your Family and  
Home from Sewage  
Backups and Overflows**



# An overflowing toilet can ruin your home in an instant.

Just a small amount of household waste flushed down the toilet (or dumped down the drain or garbage disposal) can clog pipes, cause nasty messes in your home, and result in expensive sewer backups in our community.

**AVOID CLOGS BY KEEPING THESE ITEMS OUT OF YOUR TOILET**



Put trash  
in the  
trash can.

Baby & facial wipes



Tampons & applicators



Bandages & sticker backs



Cleaning wipes



Whitening strips & their wrappers



Maxi pads & their wrappers



Photo illustration © 2014 Goldstreet Design Agency, Inc.

**CLOG**

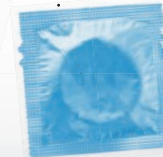
Cotton swabs & makeup pads



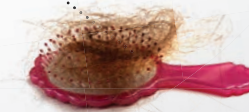
Dental floss



Kitty litter



Condoms & their wrappers



Hair



Dispose of medicines safely

**!** Do not flush unused prescription drugs or over the counter medicines. Visit [www.ebmud.com/cleanbay](http://www.ebmud.com/cleanbay) for collection sites.

## Did you know?

"Flushable" wipes are the biggest problem for sewer backups in our community. Even if the package says "flushable", they should NEVER be flushed. They belong in the trash.

**Flush ONLY human waste and toilet paper.**

