

CITY OF OAKLAND



DALZIEL BUILDING . 250 FRANK H. OGAWA PLAZA . SUITE 4344 . OAKLAND . CALIFORNIA . 94612
 Public Works Agency TEL: (510) 238-3466
 Transportation Planning & Funding Division FAX: (510) 238-7415

Bicycle and Pedestrian Advisory Committee, Monthly Meeting

Thursday, July 18, 2013; 5:30-7:30 pm

Oakland City Hall, Sgt Daniel Sakai Hearing Room (aka Hearing Room 4), Second Floor

AGENDA

Time	Item #	Topic	Topic Type
5:30	1	Introductions, appointment of note taker (5 minutes)	Ad
5:35	2	Approval of meeting minutes (5 minutes)—Seek motions to adopt the May and June meeting minutes.	A
5:40	3	Antioch Court Pedestrian Improvement Project (30 minutes)—The Montclair Safety and Improvement Council and the Montclair Village Association will share their plans to make Antioch Court a safer and more accessible bike and pedestrian street. They are partnering with the City to fund construction of the improvements—in addition to local fundraising efforts—and ask the Committee to consider a future allocation of bike/pedestrian discretionary funds for the project.	A
6:10	4	Mountain Blvd-Shepherd Canyon bikeway Attachment (30 minutes)—Staff will share the bicycle wayfinding signage plan for the Mountain Blvd-Shepherd Canyon corridor, a route that connects Lake Temescal to Skyline Blvd. Before implementing improvements, staff is seeking input on which streets will provide the best connection between Lake Temescal and Montclair Village.	A
6:40	5	Embarcadero (Oak St to 16th Ave) bikeway restriping plan Attachment (20 minutes)—Staff will share the draft restriping plan for Embarcadero (Oak St to 16 th Ave) and take comments from the committee. This item continues the discussion of the restriping plan for Embarcadero/E 7 th St (16 th Ave to Kennedy St) that was presented to the committee in May 2013.	A
7:00	6	Draft design/policy for green pavement in bike lane conflict zones: Round 2 (20 minutes)—Staff will share changes to the design/policy for the use of green pavement in bike lane conflict zones since the item was presented to the committee in March 2013 and ask for feedback from the committee.	A
7:20	7	Announcements, suggestions for next meeting topics (10 minutes)	Ad

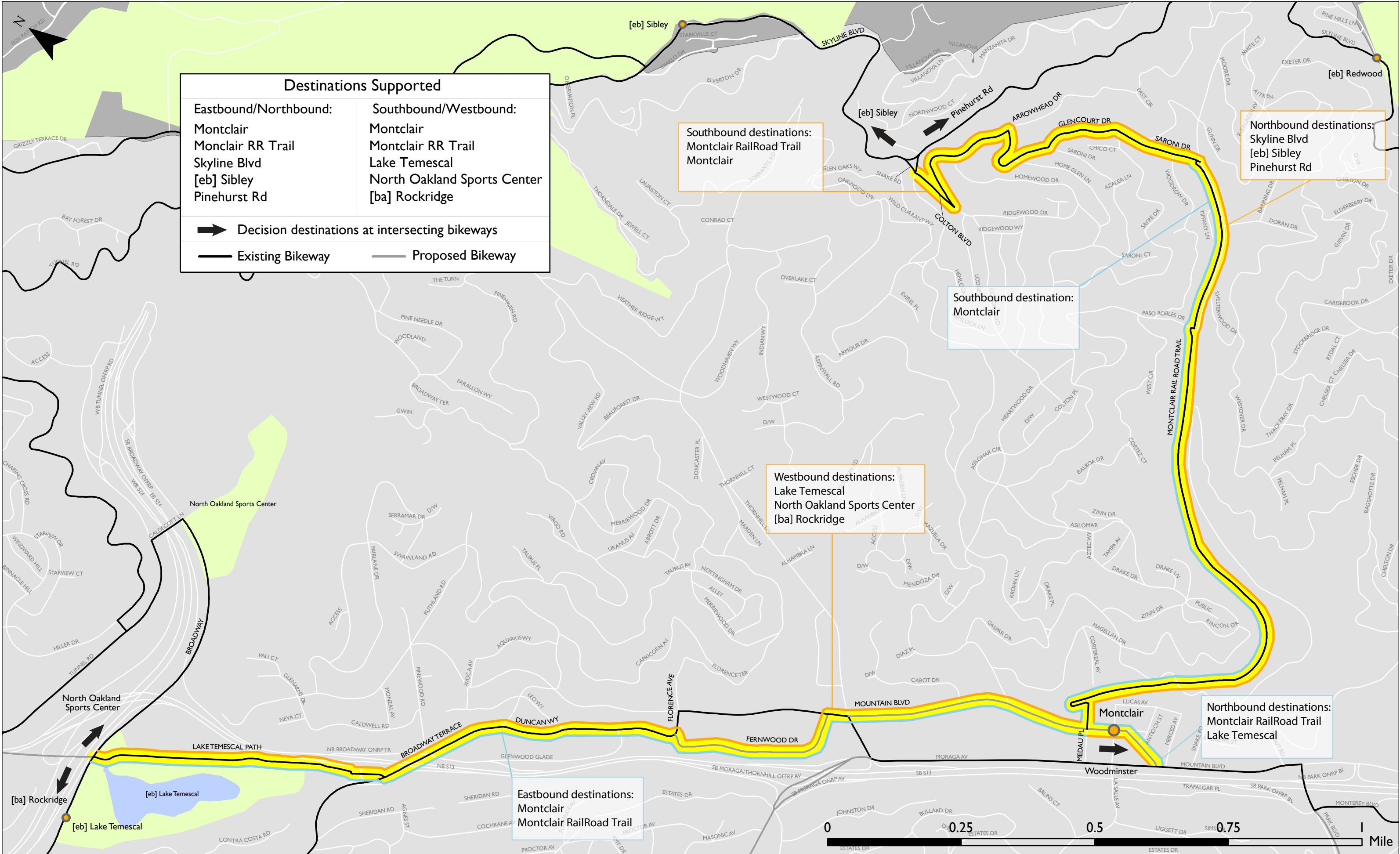
* Topic Types:

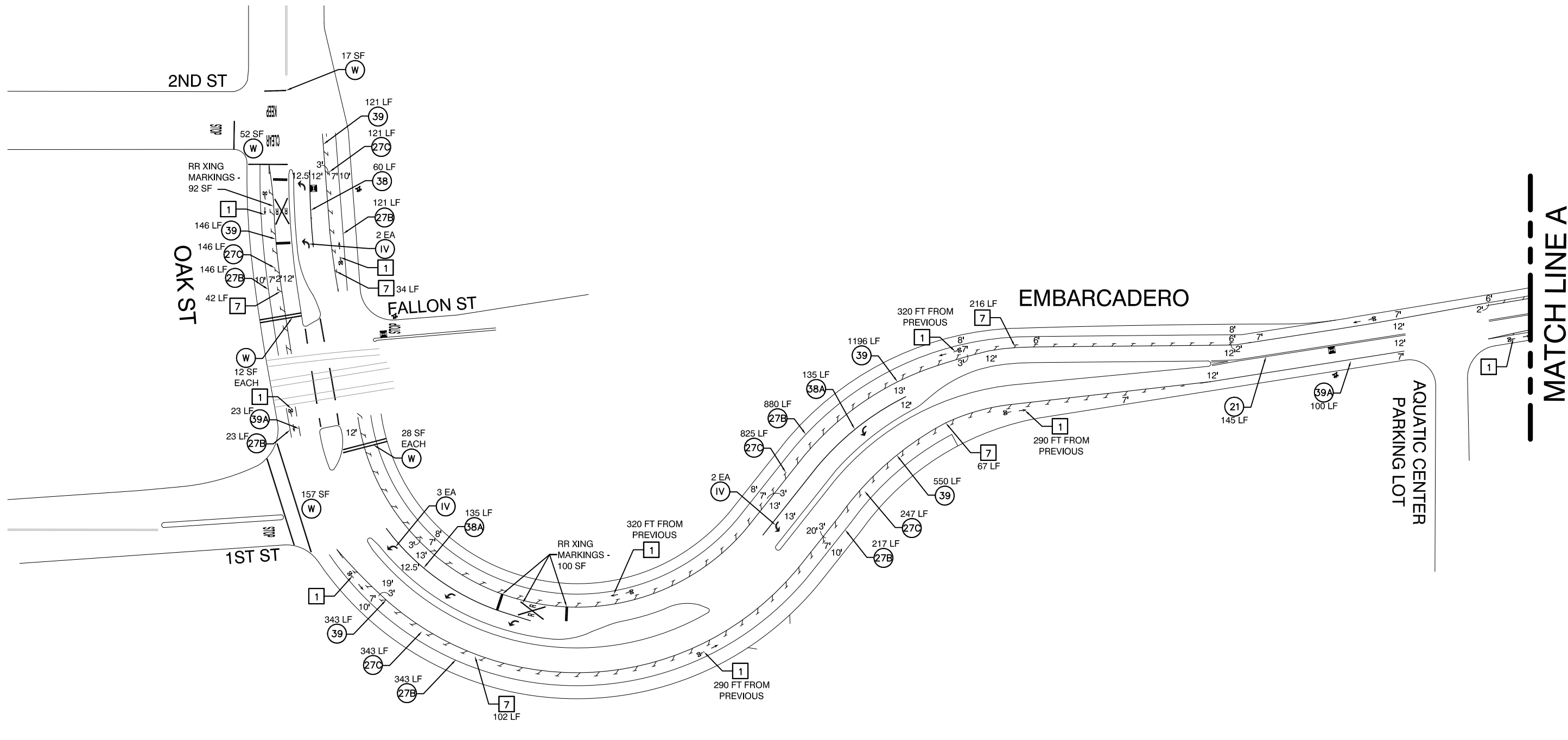
I=informational; A=action item; Ad=administrative

Agenda online at: www2.oaklandnet.com/n/OAK039262

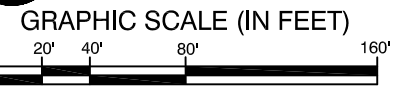
Mountain Blvd/Shepherd Canyon (Broadway to Skyline Blvd) Overview Map

Last Revised: 15 February 2013





MATCH LINE A



LEGEND

# STRIPING CONSTRUCTION NOTE NUMBER	FIRE HYDRANT
# DETAIL NUMBER PER CALTRANS STD PLANS Traffic lines as cardinal number Arrows as roman numeral	BLUE FIRE HYDRANT MARKER
TS TRAFFIC SIGNAL	BICYCLE DETECTOR MARKING
W CROSSWALK/LIMIT LINE (SOLID ONE FOOT WHITE LINE)	ETR EXISTING TO REMAIN
Y CROSSWALK/LIMIT LINE (SOLID ONE FOOT YELLOW LINE)	LF LINEAR FEET
	SF SQUARE FEET
	CR CURB RETURN
	FC FACE OF CURB

CONSTRUCTION NOTES

1 BIKE LANE SYMBOL & ARROW Install bike lane symbol and bike lane arrow markings 20 feet after curb return (as measured from base of symbol) and/or as noted. Space symbol and arrow 6 feet apart. See Detail.	4 BIKE DETECTOR SYMBOL Install bike detector pavement marking 6 feet from lane line and 1 foot from limit line or as noted. See Detail.	7 WHITE BUFFER STRIPING Install 6 inch white striping every 8 feet at 45 degree angle, or as noted.
2 SHARROW Install first sharrow marking 20 feet after curb return or as noted. Install other sharrow markings as noted. See Detail.	5 SPEED HUMP STRIPING Install chevrons of 1 foot white stripes on speed humps per 2012 MUTCD Figure 3B-29, Option B.	8 YELLOW BUFFER STRIPING Install 6 inch yellow striping every 15 feet at 45 degree angle, or as noted.
3 PARKING TEE Install short stem toward curb, distance measured from center of cross. Spacing between tees to be determined by engineer. See Detail.	6 LADDER CROSSWALK Install 2 foot stripes spaced 2 feet apart, bounded by standard 1 foot crosswalk stripes, white unless otherwise noted. See Detail.	9 REMOVE CONFLICTING STRIPING
		10 REMOVE CONFLICTING MARKINGS

DRAFT, JULY 2013



CITY OF OAKLAND
 DEPARTMENT OF ENGINEERING AND CONSTRUCTION SERVICES
 250 FRANK OGAWA PLAZA, SUITE 4314 * OAKLAND, CA 94612
 (510) 238-3437 * FAX (510) 238-7227
 PROJECT NO. _____

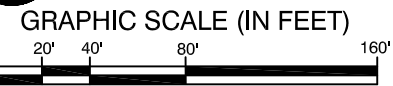
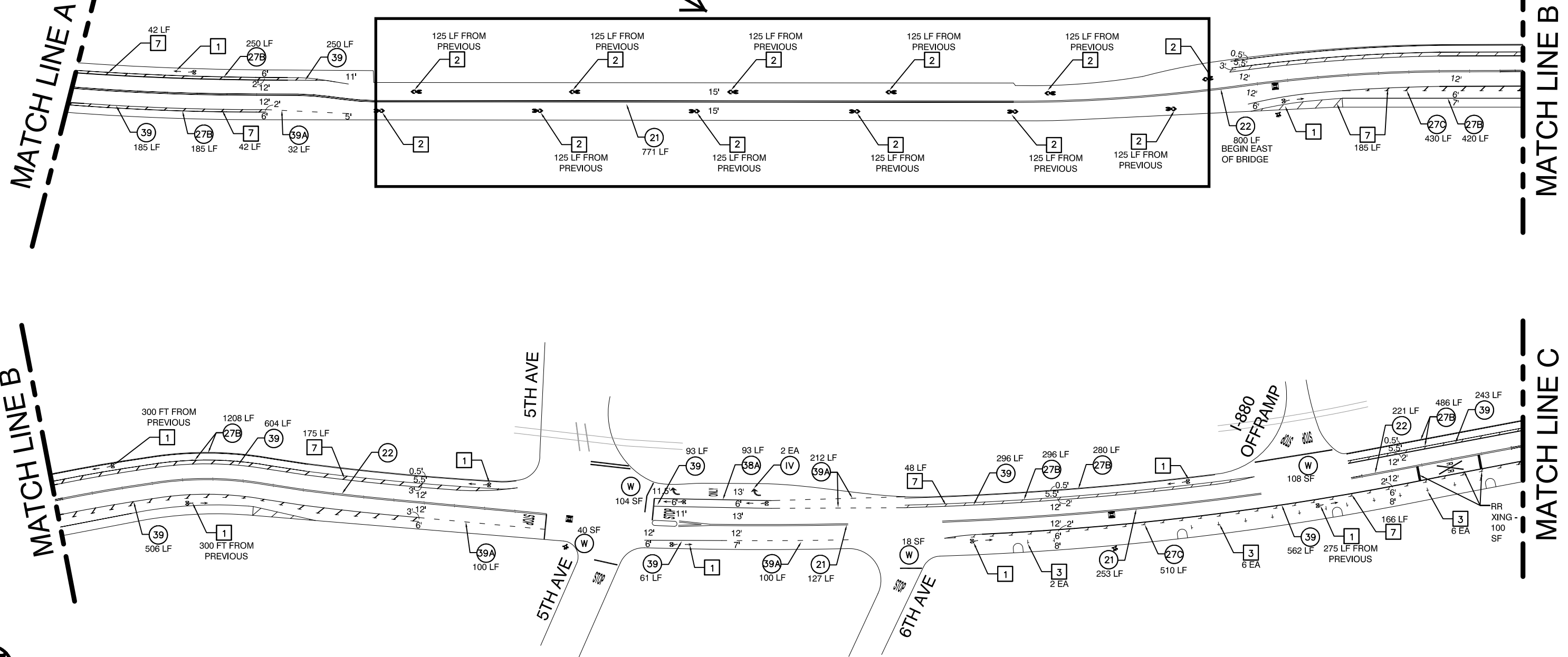
CIVIL ENGINEER	No.	DATE	BY	REFERENCE
RCE NO. _____ EXP. _____				
CHECKED BY _____				
DESIGNED BY _____				
DRAWN BY _____ ARS				

LAYOUT PLAN
 EMBARCADERO
 FROM OAK ST TO 16TH AVENUE

S-01

SCALE: 1"=80'
HOR. VERT. DATE:
SHEET NO. 1 OF 4

Note: This portion of roadway shown with sharrows will be rebuilt by the Embarcadero Bridge replacement project to include bike lanes and a mixed use path.



LEGEND

	STRIPING CONSTRUCTION NOTE NUMBER		FIRE HYDRANT
	DETAIL NUMBER PER CALTRANS STD PLANS Traffic lines as cardinal number Arrows as roman numeral		BLUE FIRE HYDRANT MARKER
	TRAFFIC SIGNAL		BICYCLE DETECTOR MARKING
	CROSSWALK/LIMIT LINE (SOLID ONE FOOT WHITE LINE)	ETR	EXISTING TO REMAIN
	CROSSWALK/LIMIT LINE (SOLID ONE FOOT YELLOW LINE)	LF	LINEAR FEET
		SF	SQUARE FEET
		CR	CURB RETURN
		FC	FACE OF CURB

CONSTRUCTION NOTES

1 BIKE LANE SYMBOL & ARROW Install bike lane symbol and bike lane arrow markings 20 feet after curb return (as measured from base of symbol) and/or as noted. Space symbol and arrow 6 feet apart. See Detail.	4 BIKE DETECTOR SYMBOL Install bike detector pavement marking 6 feet from lane line and 1 foot from limit line or as noted. See Detail.	7 WHITE BUFFER STRIPING Install 6 inch white striping every 8 feet at 45 degree angle, or as noted.
2 SHARROW Install first sharrow marking 20 feet after curb return or as noted. Install other sharrow markings as noted. See Detail.	5 SPEED HUMP STRIPING Install chevrons of 1 foot white stripes on speed humps per 2012 MUTCD Figure 3B-29, Option B.	8 YELLOW BUFFER STRIPING Install 6 inch yellow striping every 15 feet at 45 degree angle, or as noted.
3 PARKING TEE Install short stem toward curb, distance measured from center of cross. Spacing between tees to be determined by engineer. See Detail.	6 LADDER CROSSWALK Install 2 foot stripes spaced 2 feet apart, bounded by standard 1 foot crosswalk stripes, white unless otherwise noted. See Detail.	9 REMOVE CONFLICTING STRIPING
		10 REMOVE CONFLICTING MARKINGS

MATCH LINE C

MATCH LINE D

MATCH LINE D

MATCH LINE E



GRAPHIC SCALE (IN FEET)



LEGEND

- | | |
|---|--------------------------|
| STRIPING CONSTRUCTION NOTE NUMBER | FIRE HYDRANT |
| DETAIL NUMBER PER CALTRANS STD PLANS
Traffic lines as cardinal number
Arrows as roman numeral | BLUE FIRE HYDRANT MARKER |
| TRAFFIC SIGNAL | BICYCLE DETECTOR MARKING |
| CROSSWALK/LIMIT LINE (SOLID ONE FOOT WHITE LINE) | ETR EXISTING TO REMAIN |
| CROSSWALK/LIMIT LINE (SOLID ONE FOOT YELLOW LINE) | LF LINEAR FEET |
| | SF SQUARE FEET |
| | CR CURB RETURN |
| | FC FACE OF CURB |

CONSTRUCTION NOTES

- | | | |
|--|--|--|
| 1 BIKE LANE SYMBOL & ARROW
Install bike lane symbol and bike lane arrow markings 20 feet after curb return (as measured from base of symbol) and/or as noted. Space symbol and arrow 6 feet apart. See Detail. | 4 BIKE DETECTOR SYMBOL
Install bike detector pavement marking 6 feet from lane line and 1 foot from limit line or as noted. See Detail. | 7 WHITE BUFFER STRIPING
Install 6 inch white striping every 8 feet at 45 degree angle, or as noted. |
| 2 SHARROW
Install first sharrow marking 20 feet after curb return or as noted. Install other sharrow markings as noted. See Detail. | 5 SPEED HUMP STRIPING
Install chevrons of 1 foot white stripes on speed humps per 2012 MUTCD Figure 3B-29, Option B. | 8 YELLOW BUFFER STRIPING
Install 6 inch yellow striping every 15 feet at 45 degree angle, or as noted. |
| 3 PARKING TEE
Install short stem toward curb, distance measured from center of cross. Spacing between tees to be determined by engineer. See Detail. | 6 LADDER CROSSWALK
Install 2 foot stripes spaced 2 feet apart, bounded by standard 1 foot crosswalk stripes, white unless otherwise noted. See Detail. | 9 REMOVE CONFLICTING STRIPING |
| | | 10 REMOVE CONFLICTING MARKINGS |

DRAFT, JULY 2013



CITY OF OAKLAND

DEPARTMENT OF ENGINEERING AND CONSTRUCTION SERVICES
250 FRANK OGAWA PLAZA, SUITE 4314 * OAKLAND, CA 94612
(510) 238-3437 * FAX (510) 238-7227
PROJECT NO. XXXXXXXX

CIVIL ENGINEER

RCE NO. EXP.

CHECKED BY

DESIGNED BY

DRAWN BY ARS

No.	DATE	BY	REFERENCE
-----	------	----	-----------

LAYOUT PLAN

EMBARCADERO
FROM OAK ST TO 16TH AVENUE

S-03

SCALE: 1"=80'

HOR.

VERT.

DATE:

SHEET NO.

3 OF 4

MATCH LINE E

MATCH LINE F

MATCH LINE F



GRAPHIC SCALE (IN FEET)



LEGEND

- | | |
|---|--------------------------|
| STRIPING CONSTRUCTION NOTE NUMBER | FIRE HYDRANT |
| DETAIL NUMBER PER CALTRANS STD PLANS
Traffic lines as cardinal number
Arrows as roman numeral | BLUE FIRE HYDRANT MARKER |
| TRAFFIC SIGNAL | BICYCLE DETECTOR MARKING |
| CROSSWALK/LIMIT LINE (SOLID ONE FOOT WHITE LINE) | ETR EXISTING TO REMAIN |
| CROSSWALK/LIMIT LINE (SOLID ONE FOOT YELLOW LINE) | LF LINEAR FEET |
| | SF SQUARE FEET |
| | CR CURB RETURN |
| | FC FACE OF CURB |

CONSTRUCTION NOTES

- | | | |
|--|--|--|
| 1 BIKE LANE SYMBOL & ARROW
Install bike lane symbol and bike lane arrow markings 20 feet after curb return (as measured from base of symbol) and/or as noted. Space symbol and arrow 6 feet apart. See Detail. | 4 BIKE DETECTOR SYMBOL
Install bike detector pavement marking 6 feet from lane line and 1 foot from limit line or as noted. See Detail. | 7 WHITE BUFFER STRIPING
Install 6 inch white striping every 8 feet at 45 degree angle, or as noted. |
| 2 SHARROW
Install first sharrow marking 20 feet after curb return or as noted. Install other sharrow markings as noted. See Detail. | 5 SPEED HUMP STRIPING
Install chevrons of 1 foot white stripes on speed humps per 2012 MUTCD Figure 3B-29, Option B. | 8 YELLOW BUFFER STRIPING
Install 6 inch yellow striping every 15 feet at 45 degree angle, or as noted. |
| 3 PARKING TEE
Install short stem toward curb, distance measured from center of cross. Spacing between tees to be determined by engineer. See Detail. | 6 LADDER CROSSWALK
Install 2 foot stripes spaced 2 feet apart, bounded by standard 1 foot crosswalk stripes, white unless otherwise noted. See Detail. | 9 REMOVE CONFLICTING STRIPING |
| | | 10 REMOVE CONFLICTING MARKINGS |

DRAFT, JULY 2013



CITY OF OAKLAND

DEPARTMENT OF ENGINEERING AND CONSTRUCTION SERVICES
250 FRANK OGAWA PLAZA, SUITE 4314 * OAKLAND, CA 94612
(510) 238-3437 * FAX (510) 238-7227
PROJECT NO. XXXXXXXX

CIVIL ENGINEER

RCE NO. EXP.

CHECKED BY

DESIGNED BY

DRAWN BY ARS

No.	DATE	BY	REFERENCE

LAYOUT PLAN
EMBARCADERO
FROM OAK ST TO 16TH AVENUE

S-04

SCALE: 1"=80'

HOR.

VERT.

DATE:

SHEET NO.

4 OF 4