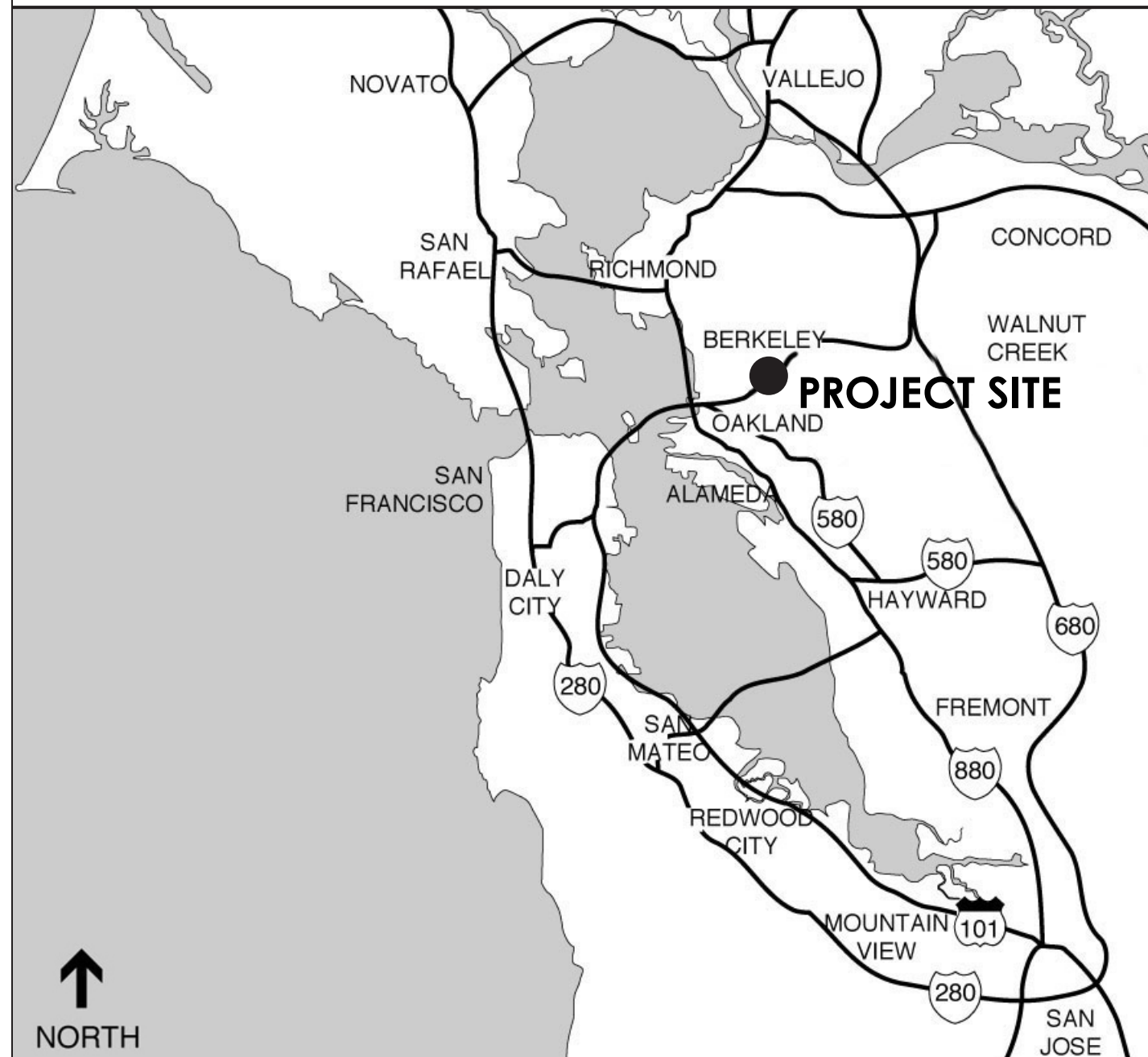


# CLAREMONT CLUB, SPA & RESIDENCES

## A FAIRMONT HOTEL

### LOCATION MAP



### VICINITY MAP



### PROJECT DIRECTORY

#### OWNER

Claremont Hotel Properties, LP  
41 Tunnel Road  
Oakland, CA 94705

#### DEVELOPER

Signature Development Group  
2335 Broadway, Suite 200  
Oakland, CA 94612  
(510) 251 9270  
Contact: Jamie Choy  
[jchoy@signaturedevelopment.com](mailto:jchoy@signaturedevelopment.com)

#### MASTER PLANNER

Hart Howerton  
One Union Street  
San Francisco, CA 94111  
(415) 439 2200  
Contact: Eron Ashley  
[eashley@harthowerton.com](mailto:eashley@harthowerton.com)

#### ARCHITECT

Levy Design Partners  
90 South Park Street  
San Francisco, CA 94107  
(415) 777 0561  
Contact: Toby Levy  
[toby@levydesignpartners.com](mailto:toby@levydesignpartners.com)

#### ARCHITECT

Hart Howerton  
One Union Street  
San Francisco, CA 94111  
(415) 439 2200  
Contact: Eron Ashley  
[eashley@harthowerton.com](mailto:eashley@harthowerton.com)

#### LANDSCAPE ARCHITECT

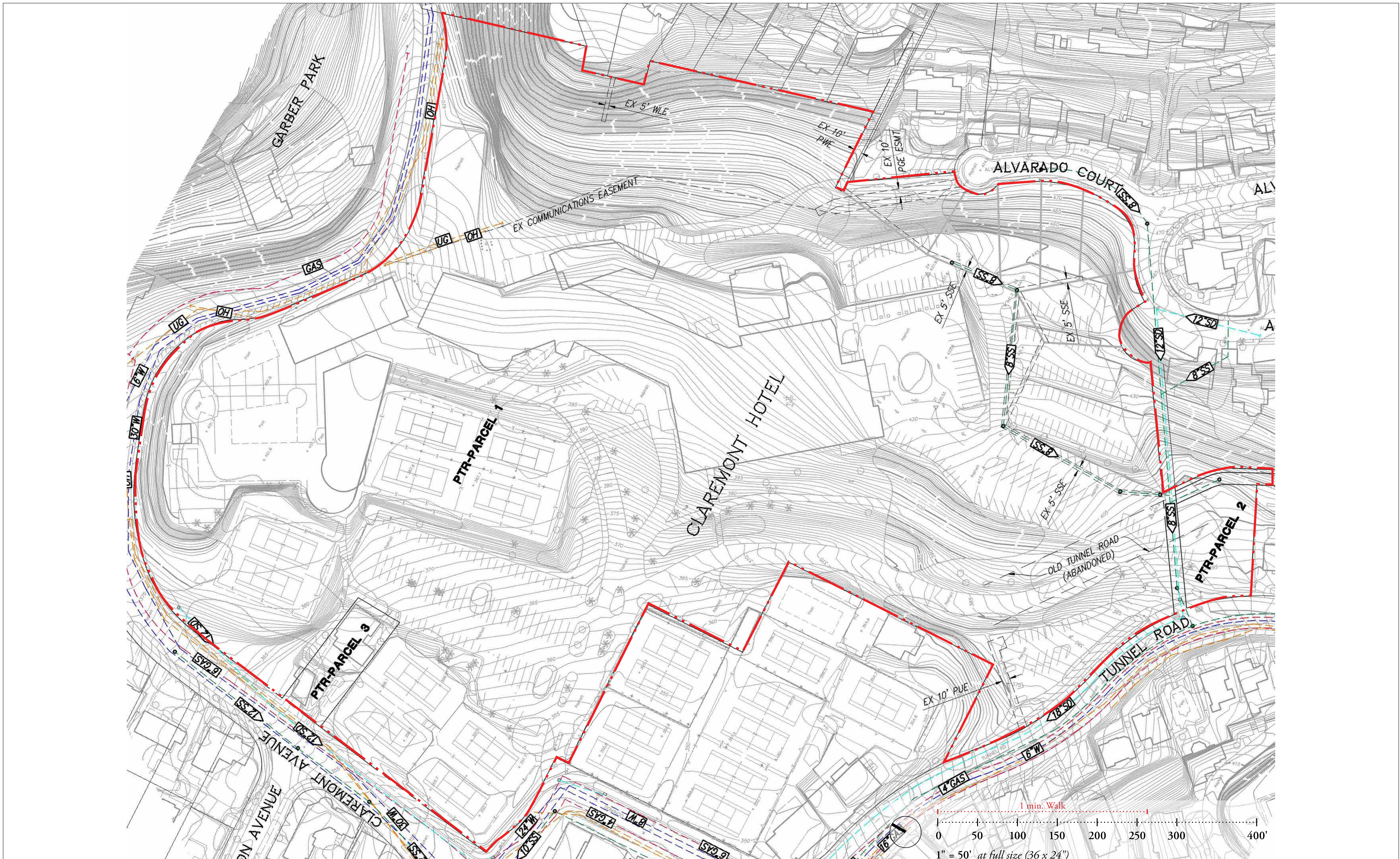
Hart Howerton  
One Union Street  
San Francisco, CA 94111  
(415) 439 2200  
Contact: Eron Ashley  
[eashley@harthowerton.com](mailto:eashley@harthowerton.com)

#### CIVIL ENGINEER

Ruggeri-Jenson-Azar  
4690 Chabot Drive, Suite 200  
Pleasanton, CA 94588  
(925) 227 9100  
Contact: Mark Falgout  
[mfalgout@rja-gps.com](mailto:mfalgout@rja-gps.com)

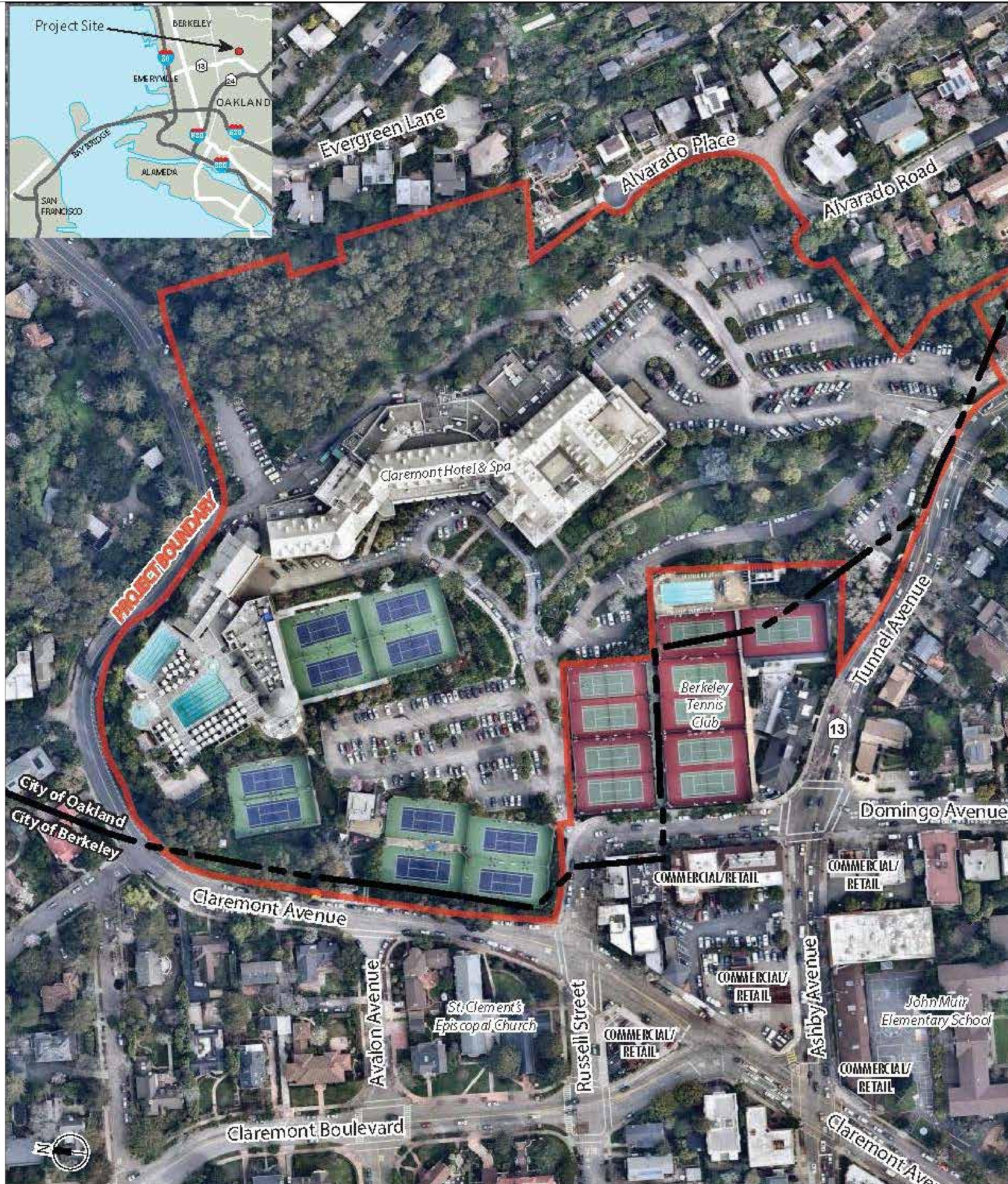
### SHEET INDEX

		Submission 7/6/16	
<b>GENERAL, SITE &amp; LANDSCAPE</b>			
G001	Cover Sheet	X	
G002	Site Plan - Existing Conditions	X	
G003	Neighborhood Plan	X	
G004	Historic Photos	X	
G005	Historic Aerial - 1939	X	
G006	Historic Aerial - 1958	X	
G007	Historic Aerial - 1968	X	
G008	Existing Site Aerial	X	
G009	Existing Site Photos	X	
G010	Site Plan - Proposed	X	
G011	Pedestrian Circulation & Access Plan	X	
G012	Proposed Aerial Rendering	X	
<b>RESIDENTIAL BUILDINGS</b>			
AR001	Residential - Site Photos	X	
AR002	Residential - Inspiration Images	X	
AR003	Residential - Floor Plans	X	
AR004	Residential - Building Section	X	
AR005	Residential - Site Section	X	
AR006	Residential - Rendering	X	
<b>HOTEL</b>			
AH001	Hotel - Porte Cochere Rendering	X	



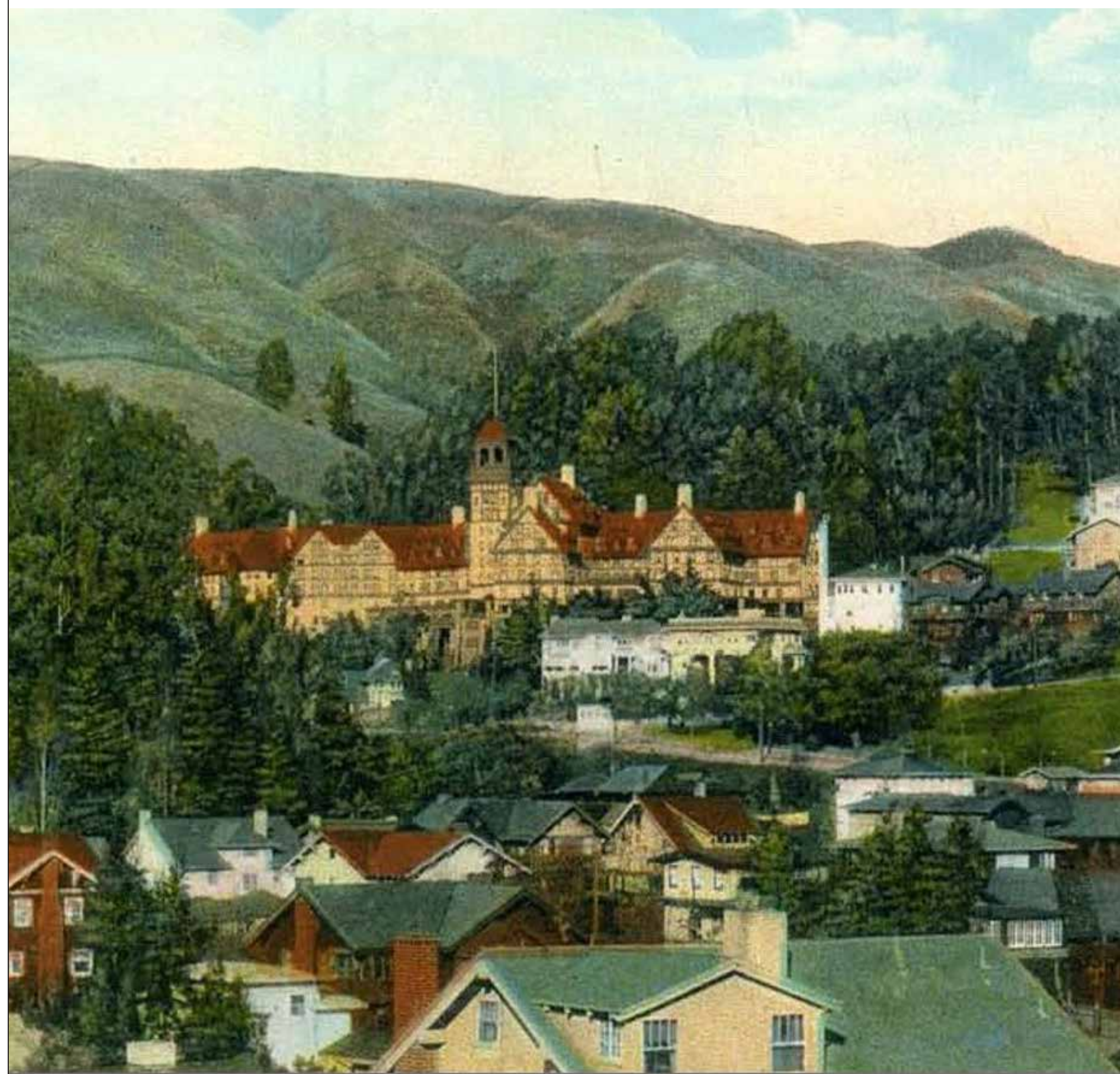
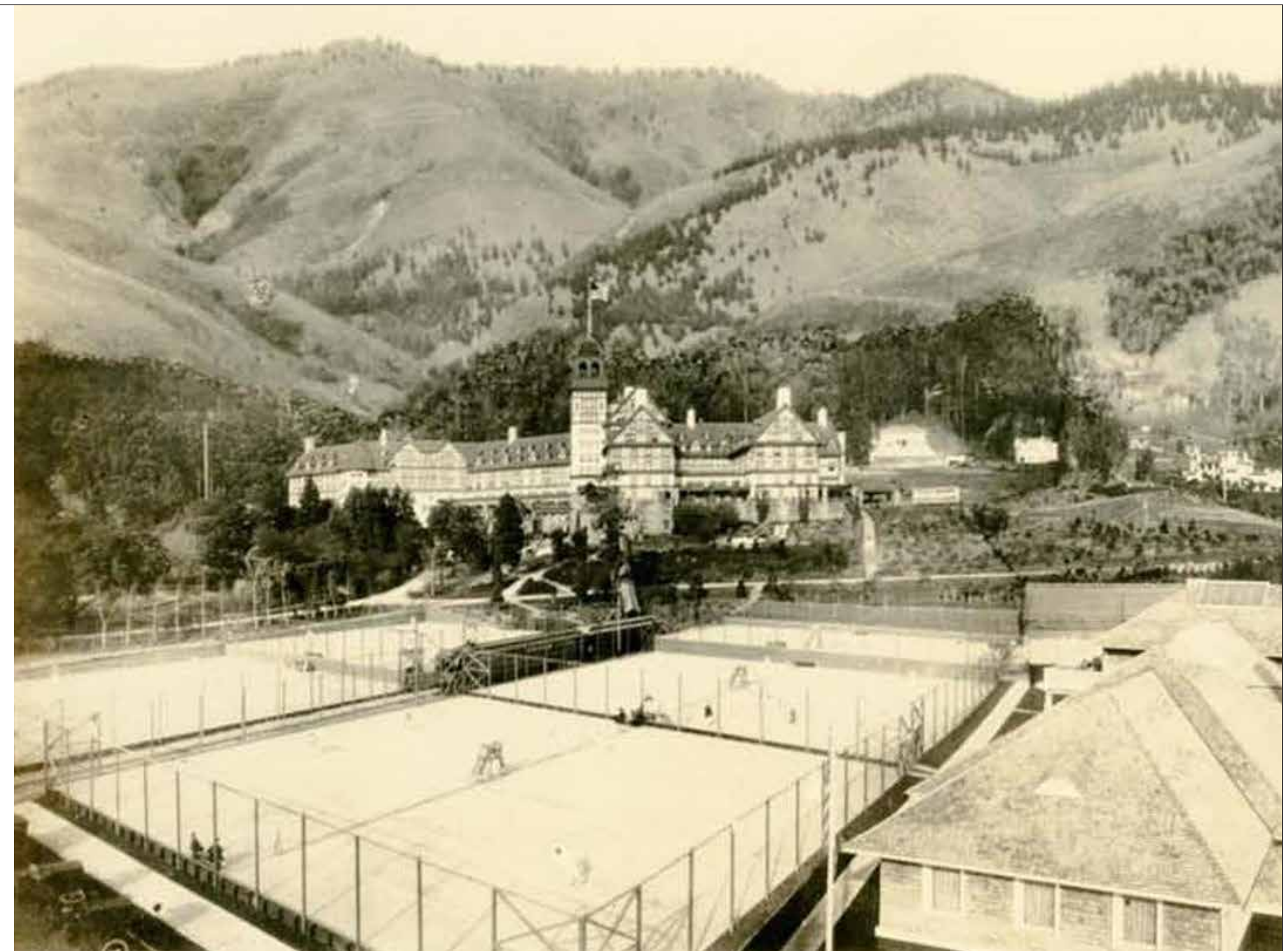
# CLAREMONT CLUB, SPA & RESIDENCES

A FAIRMONT HOTEL | Oakland, CA



# CLAREMONT CLUB, SPA & RESIDENCES

A FAIRMONT HOTEL Oakland, CA





# CLAREMONT CLUB, SPA & RESIDENCES

A FAIRMONT HOTEL    Oakland, CA





GARBER PARK

ALVARADO COURT

CLAREMONT AVENUE

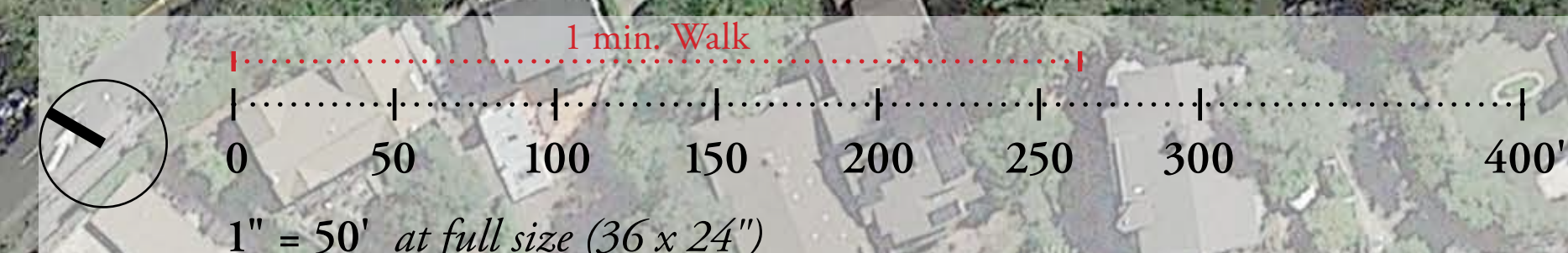
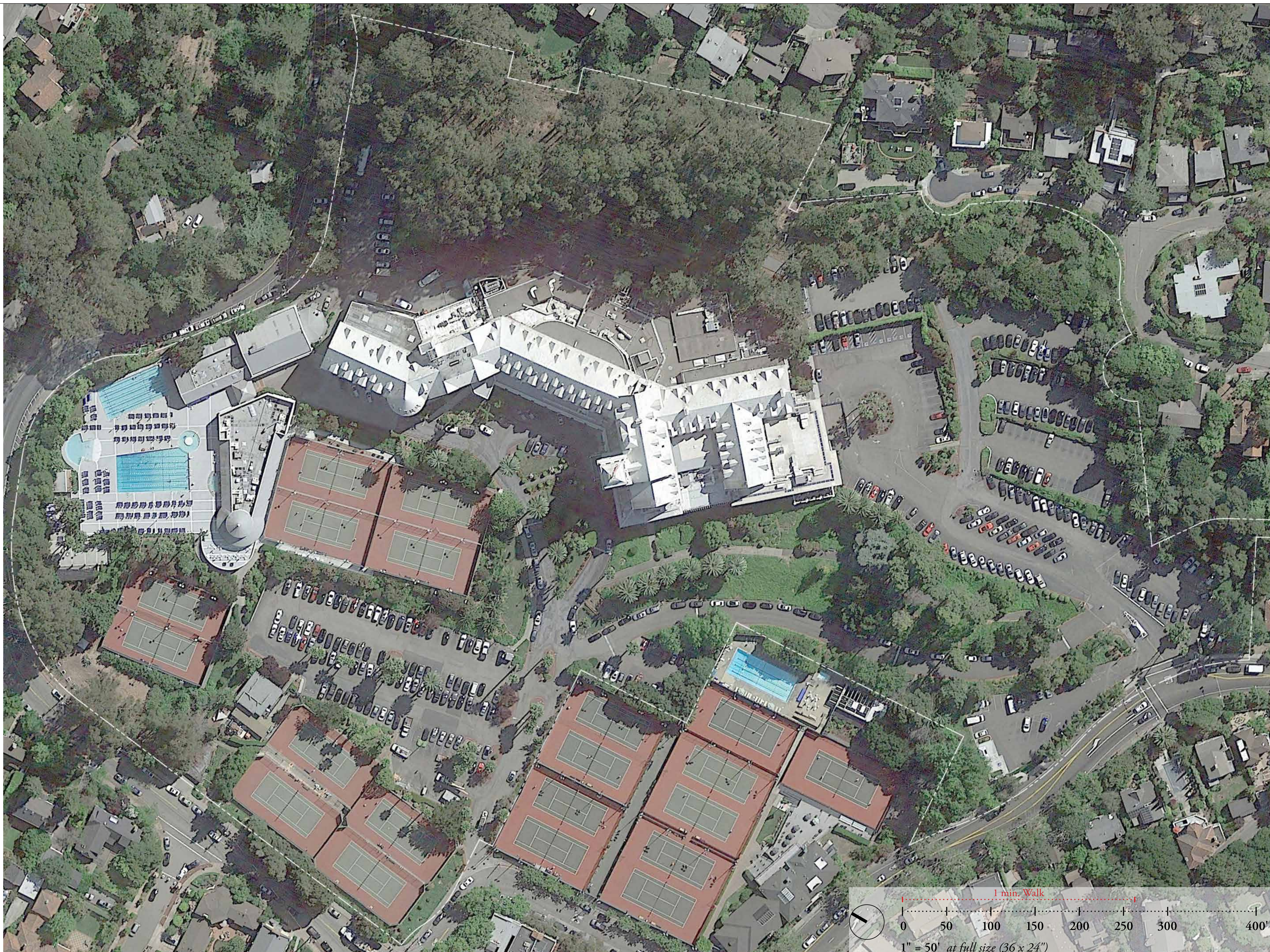
ALVARADO ROAD

EXISTING  
CLAREMONT  
HOTEL

CLAREMONT AVENUE

DOMINGO STREET

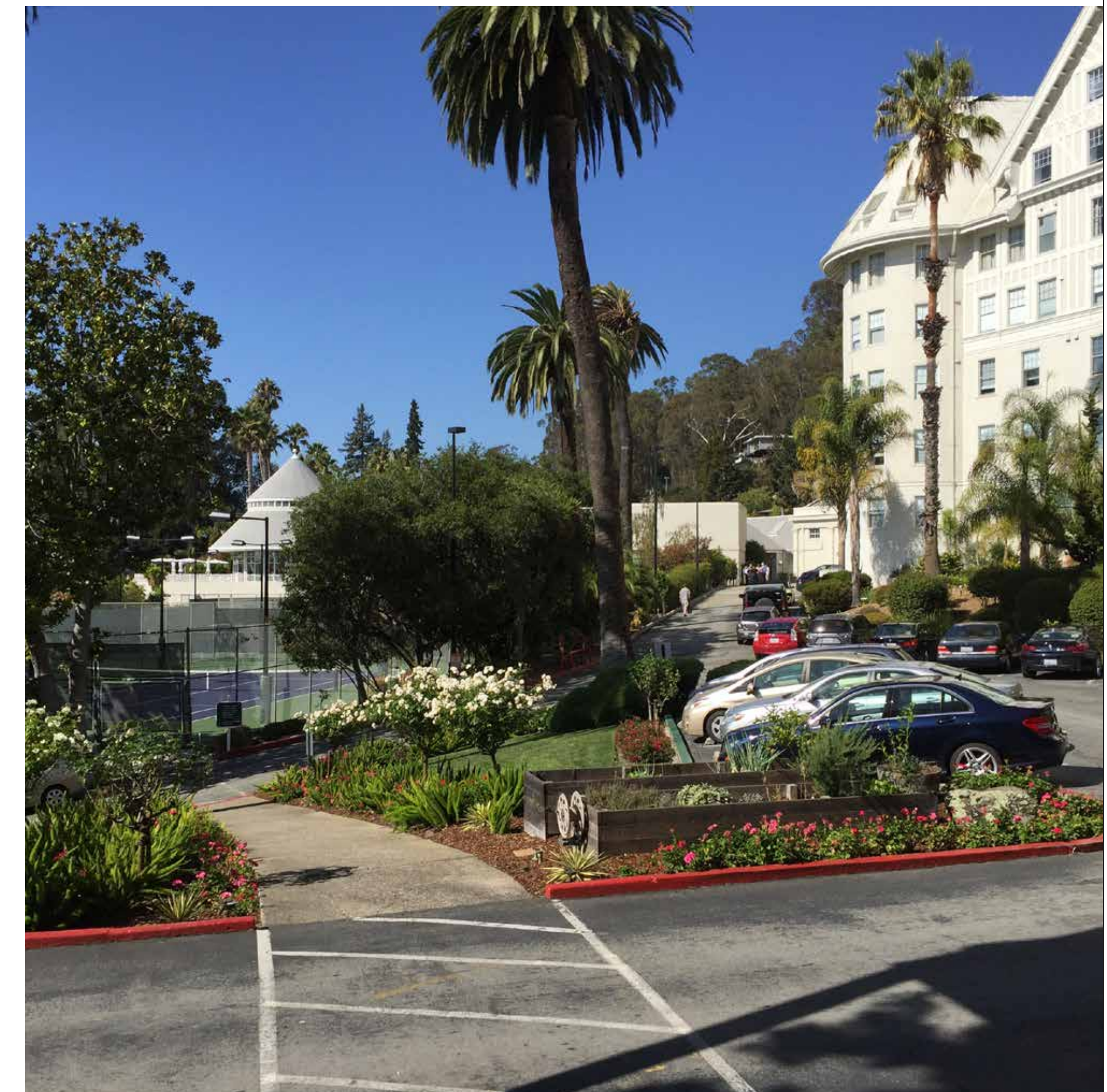
TENTH STREET



# CLAREMONT CLUB, SPA & RESIDENCES

A FAIRMONT HOTEL | Oakland, CA













LEGEND

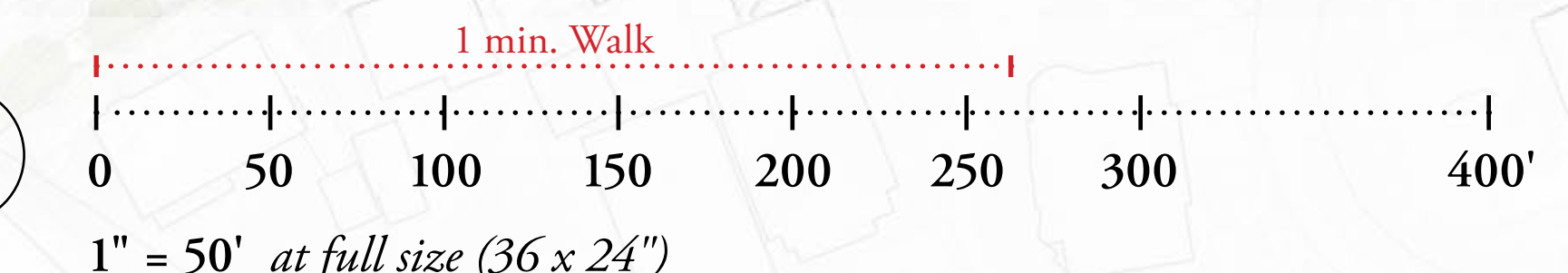
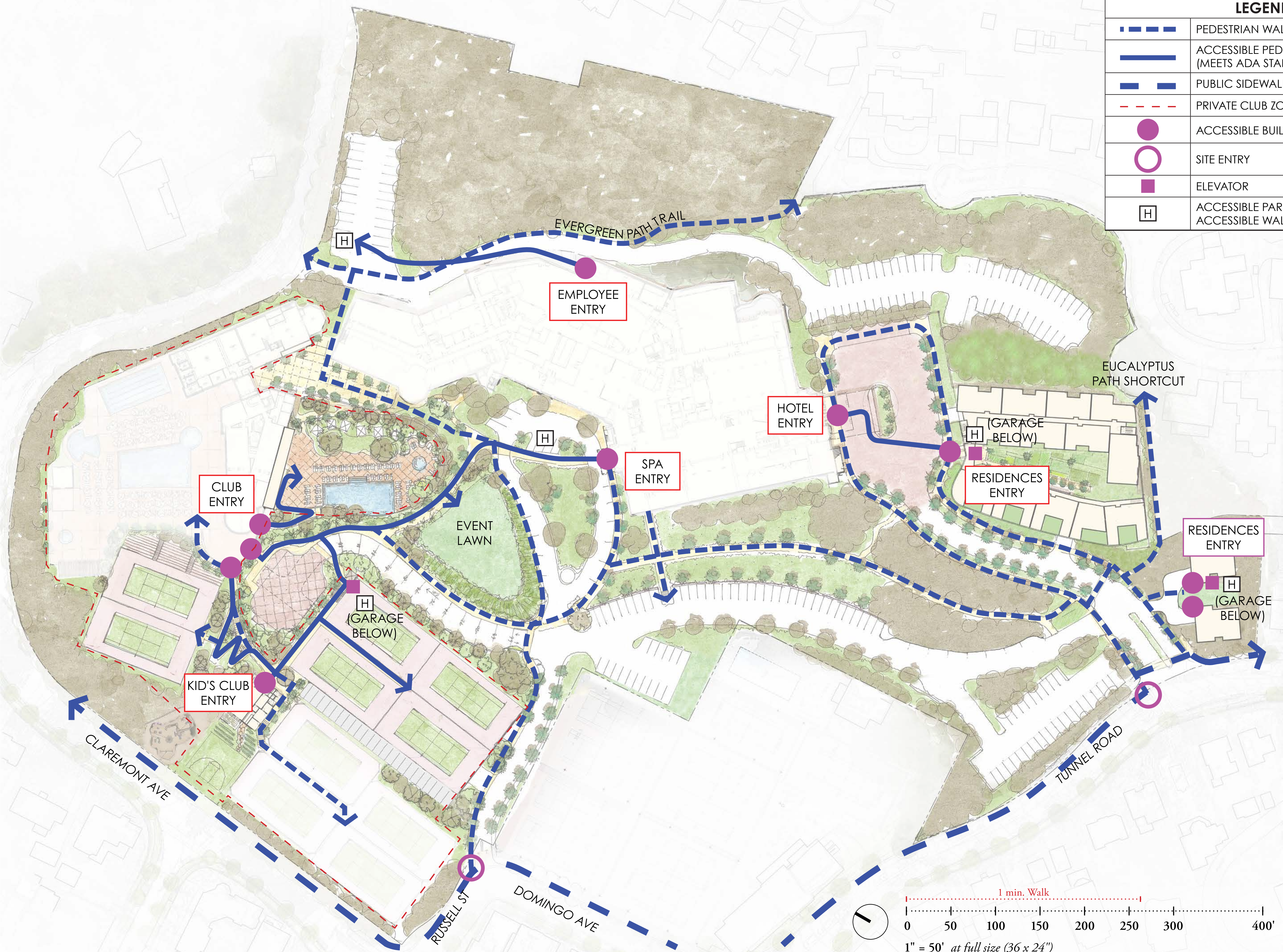
- 1 Updated Paving
- 2 Proposed Club Expansion
- 3 Proposed Adult Pool Deck
- 4 Proposed Event Lawn
- 5 Proposed Arrival Driveway to Club w/ Parallel Parking on One Side
- 6 Proposed Club Entry
- 7 Expanded Tennis Courts
- 8 Proposed 100 Bleacher Seats
- 9 Relocated Tennis over Surface Parking
- 10 Proposed Kid's Club Building & Tennis Center
- 11 Proposed Basketball Half-court w/ Lights
- 12 Updated Club Entry Road & New Sidewalks
- 13 Existing Club Parking
- 14 Updated Hotel Self-Parking
- 15 Proposed Retaining Wall to Expand Parking
- 16 Updated Hotel/ Residential Entry Road
- 17 Updated Arrival/ Porte Cochere
- 18 Proposed 43 Residential Condos w/ Subterranean Parking for Resident & Hotel Use
- 19 Proposed 2 Single Family Residences
- 20 Updated Employee Parking
- 21 Updated Fire/ Service Lane



# CLAREMONT CLUB, SPA & RESIDENCES

A FAIRMONT HOTEL *Oakland, CA*

LEGEND	
	PEDESTRIAN WALKWAY
	ACCESSIBLE PEDESTRIAN WALKWAY (MEETS ADA STANDARD)
	PUBLIC SIDEWALK IN R.O.W.
	PRIVATE CLUB ZONE
	ACCESSIBLE BUILDING ENTRY
	SITE ENTRY
	ELEVATOR
	ACCESSIBLE PARKING CONNECTED TO ACCESSIBLE WALKWAY







① SITE: AERIAL VIEW



② SITE: ENTRYWAY FROM TUNNEL ROAD



③ SITE



④ SITE: EVERGREEN PATH



⑤ CLAREMONT HOTEL PARKING LOT



⑥ SLOPE OF SITE

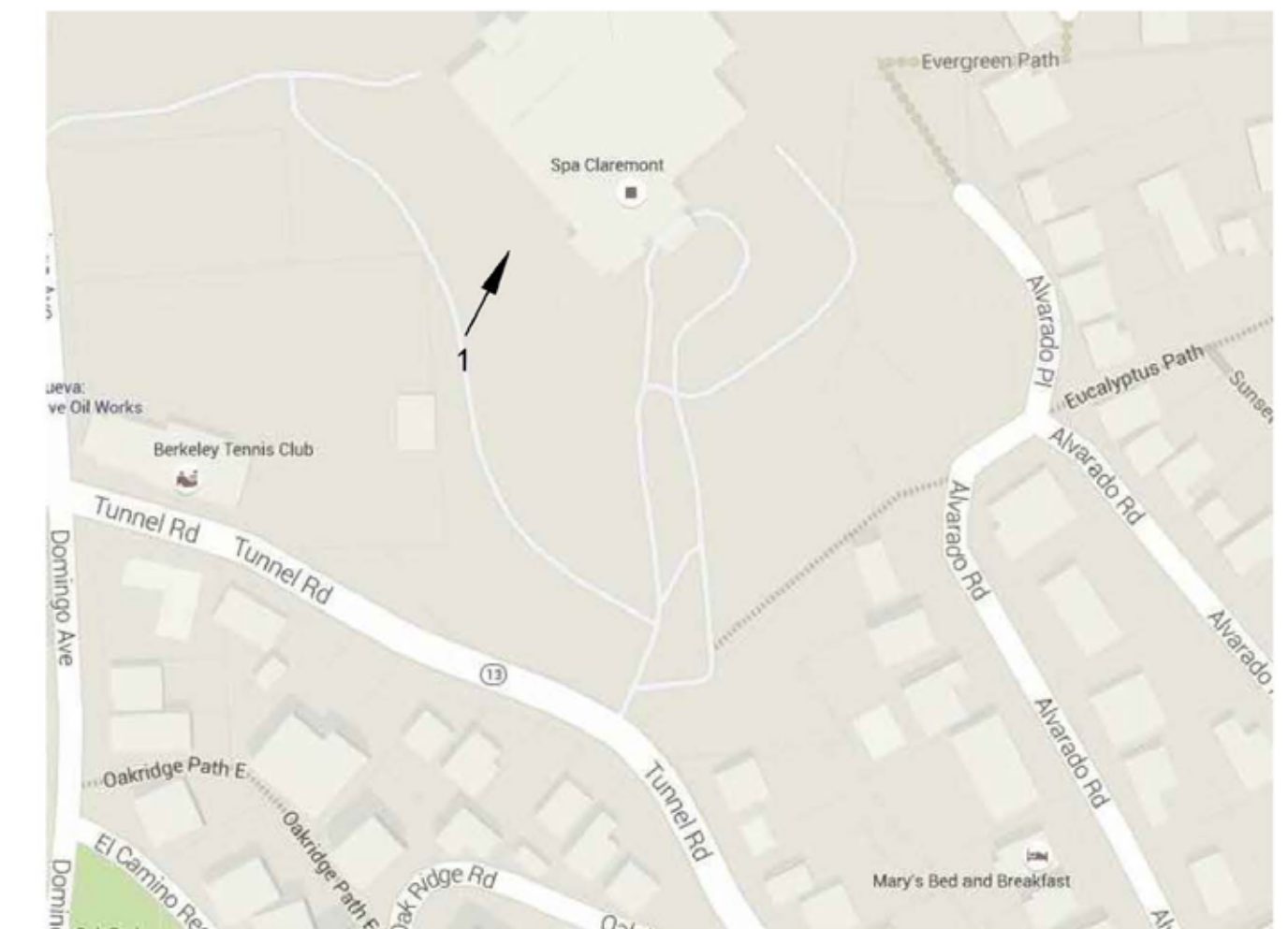


SITE MAP

1 EXISTING SITE PHOTOS



① CLAREMONT HOTEL



SITE MAP

2 NEIGHBORING BUILDING PHOTOS





Image Source: Gensler

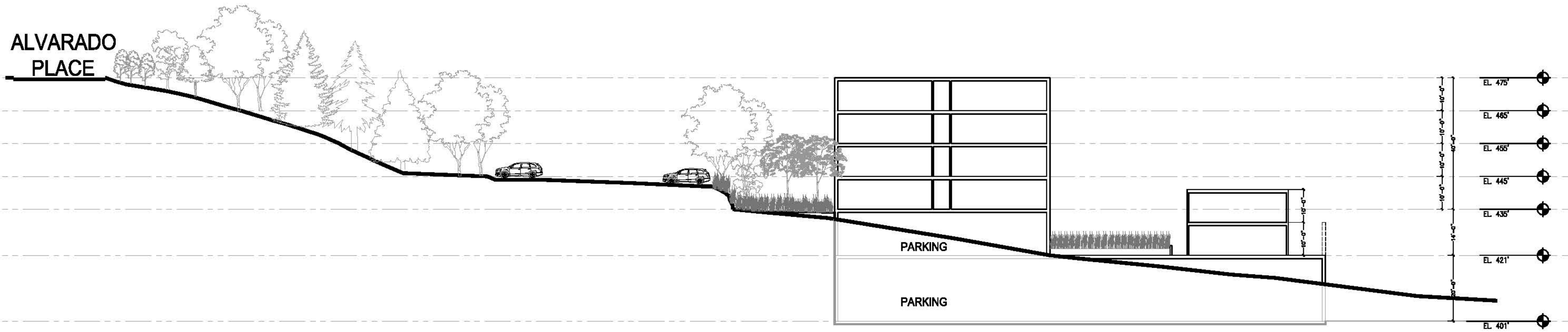


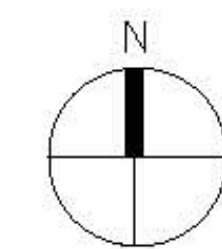
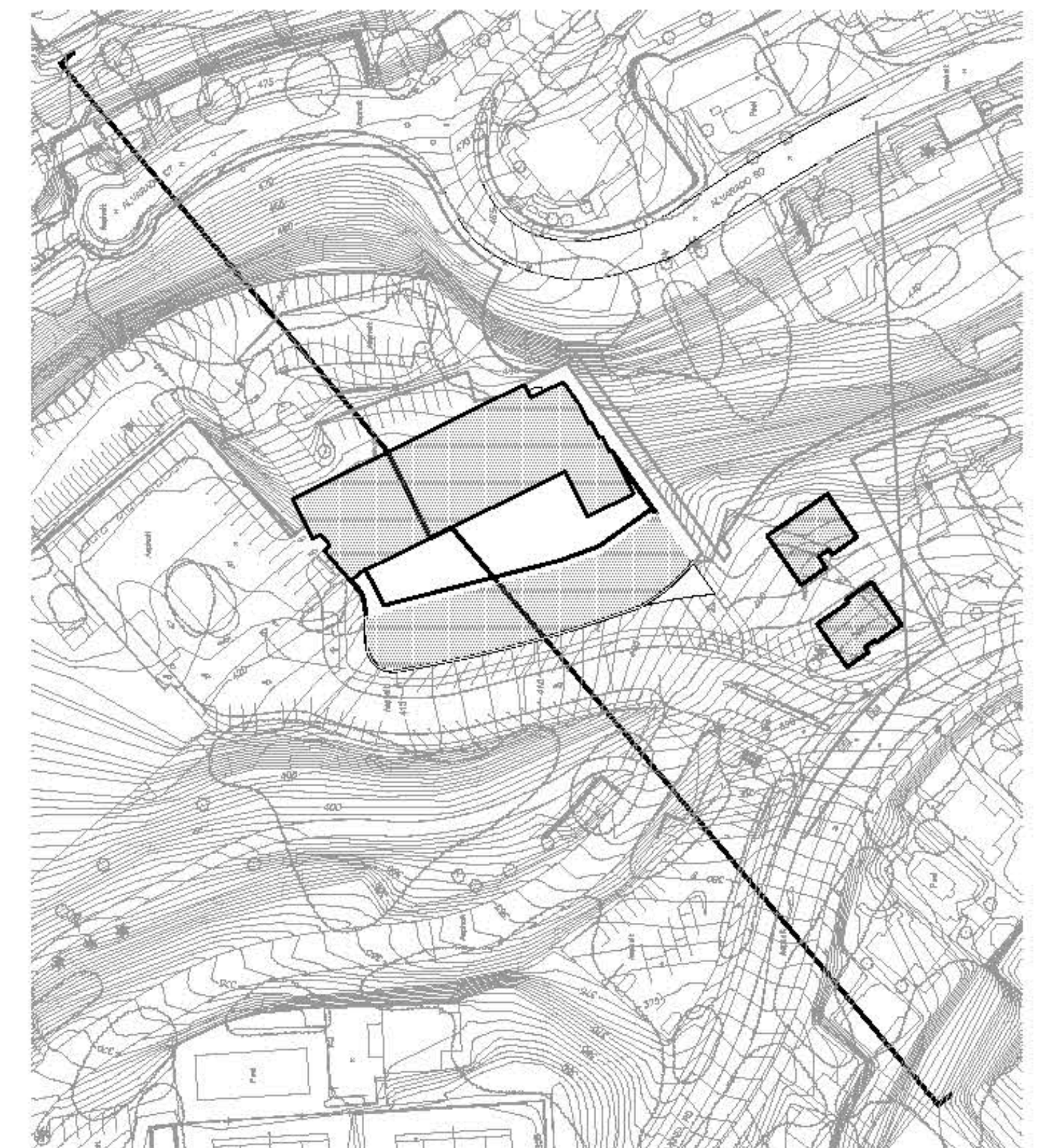
SECOND FLOOR PLAN

Unit Breakdown Summary:		
Residential Units		
# of Units	Type	SF (Net)
3	1BR	900/1175
12	2BR	1150/1400
28	3BR	1340/1880
2	3BR(SINGLE FAMILY)	3650/3820
<b>45</b>	<b>Total Units</b>	<b>65925</b>



ALVARADO  
PLACE







# CLAREMONT CLUB, SPA & RESIDENCES

A FAIRMONT HOTEL *Oakland, CA*