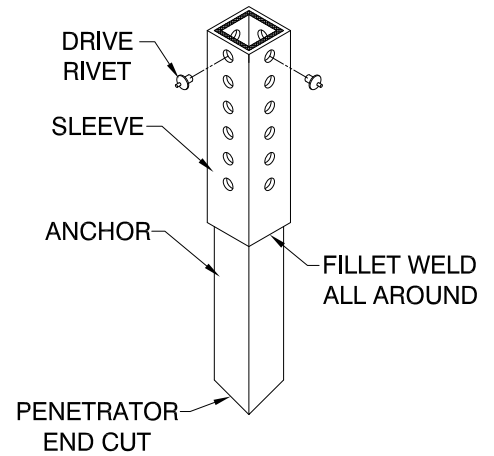


2"x2"x14 GAUGE SIGN POST  
(CUT POST TO MEET  
SPECIFIED SIGN HEIGHT)

7' MIN.



**ANCHOR/SLEEVE DETAIL**

SECURE USING 3/8" ZINC  
PLATED DRIVE RIVETS ON TWO  
ADJACENT SIDES OF POST  
SEE ANCHOR/SLEEVE DETAIL

TWO  
ANCHOR  
HOLES  
ABOVE  
GROUND

TOP OF  
SIDEWALK

FACE OF CURB 18" MIN.

2-1/2" x 2-1/2" x 12 GAUGE SLEEVE  
MIN. LENGTH = 12"  
WELDED TO ANCHOR  
SEE ANCHOR/SLEEVE DETAIL

2-1/4" x 2-1/4" x 12 GAUGE ANCHOR  
WITH PENETRATOR END CUT  
MIN. DEPTH = 24" (CONCRETE SURFACE)  
MIN. DEPTH = 30" (UNFINISHED SURFACE)  
SEE ANCHOR/SLEEVE DETAIL

NOT TO SCALE



**CITY OF OAKLAND**

DEPARTMENT OF TRANSPORTATION | SAFE STREETS DIVISION  
BICYCLE & PEDESTRIAN PROGRAM  
250 FRANK H. OGAWA PLAZA, SUITE 4344 \* OAKLAND CA, 94612  
(510) 238-3466 \* FAX (510) 238-7415

**STANDARD SIGN POST DETAIL**

**SIGNAGE DETAILS**

SCALE: NTS

DWG. NO.

DATE: MAR 2021

**SD-1**