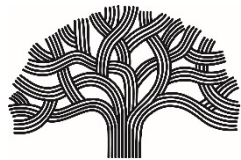


**Oakland Parks, Recreation and Youth Development
OPRYD
250 Frank H. Ogawa Plaza
Oakland, CA 94612**



CITY OF OAKLAND

***Special Meeting of the Oakland Parks and Recreation Advisory Commission**

*****Special Meeting Agenda*****

Wednesday, July 8, 2020

4:30 PM

**Please see the information page to participate in the meeting
via TeleConference**

Meeting Participation Information
PARKS AND RECREATION ADVISORY COMMISSION (PRAC)
The public may observe and/or participate in this meeting as follows.

OBSERVE:

You are invited to a Zoom webinar.

When: Jul 8, 2020 04:30 PM Pacific Time (US and Canada)

Topic: Special Meeting of the Parks and Recreation Advisory Commission - July 8, 2020

Please click the link below to join the webinar:

<https://zoom.us/j/91834846676>

Or iPhone one-tap :

US: +14086380968,,91834846676# or +16699006833,,91834846676#

Or Telephone: Dial(for higher quality, dial a number based on your current location):

US: +1 408 638 0968 or +1 669 900 6833 or +1 253 215 8782 or +1 346 248 7799 or +1 312 626 6799 or +1 646 876 9923 or +1 301 715 8592

Webinar ID: 918 3484 6676

International numbers available: <https://zoom.us/u/a4gE7bnL9>

If asked for a participant ID or code, press #. Instructions on how to join a meeting by phone are available at <https://support.zoom.us/hc/en-us/articles/201362663> - Joining-a-meeting-by-phone.

COMMENT:

Public comment on action items will be taken after the presentation of each report under Item 7 on the agenda. Comment for items not on the agenda will be taken during Open Forum.

HOW TO SUBMIT PUBLIC COMMENTS:

1. To comment by Zoom video conference, click the “Raise Your Hand” button to request to speak when Open Forum comment is being taken or on an eligible agenda item after it has been presented. You will be permitted to speak during your turn, allowed to comment, and after the allotted time, re-muted. Instructions on how to “Raise Your Hand” is available at: <https://support.zoom.us/hc/en-us/articles/205566129> - Raise-Hand-In-Webinar.

2. To comment by phone, please call on one of the above listed phone numbers. You will be prompted to “Raise Your Hand” by pressing “*9” to speak when Open Forum is taken or after an eligible agenda item has been presented. You will be permitted to speak during your turn, allowed to comment, and after the allotted time, re-muted. Please unmute yourself by pressing *6.

If you have any questions, please email Diane Boyd, Executive Assistant to the Director of Oakland Parks, Recreation and Youth Development dboyd@oakland.ca.gov.

-Oakland Parks, Recreation and Youth Development (OPRYD)

***Special Meeting of the Oakland Parks and Recreation Advisory Commission**

*****Special Meeting Agenda*****

Wednesday, July 8, 2020

4:30 PM

AGENDA

1. CALL TO ORDER:
2. ROLL CALL:
AIKENS, COLE, CORBIN, HA, HOWZE, KOS-READ, MOORE, REILLY, SMITH, TORRES, WOLFSON
3. DISPOSITON OF MINUTES:
June 17, 2020 – Special Meeting Minutes
4. OPEN FORUM
5. DIRECTOR’S REPORT
6. MODIFICATIONS TO THE AGENDA:
7. CONSENT NEW BUSINESS:
8. NEW BUSINESS:
 - A. **Informational Report On The Approved Parks For The Oak Knoll Mixed-Use Community Project, Which Will Be Dedicated To The City Of Oakland As City Parks.**
9. PLANNING AND CONDITIONAL USE PERMITS:
10. COMMITTEE AND/OR ADVISORY COUNCIL UPDATES:
11. ANNOUNCEMENTS AND COMMUNICATIONS:
12. CONTINUATION OF OPEN FORUM:
13. ADJOURNMENT:

Next Meeting:

Wednesday, September 16, 2020 – Special Meeting

Zoom - TeleConference



***Minutes - Special Meeting of the Oakland Parks and
Recreation Advisory Commission (PRAC)***
via Zoom - Teleconference
Wednesday, June 17, 2020, 4:30 PM

AGENDA

1. CALL TO ORDER: 4:35PM
2. ROLL CALL:

**AIKENS, COLE, CORBIN, HA, HOWZE, MOORE, REILLY, SMITH, TORRES,
WOLFSON**

Present: 7 – Aikens, Cole, Corbin, Ha, Moore, Reilly, Wolfson
Arrivals: 1 – Howze
Absent: 2 – Smith and Torres

3. DISPOSITON OF MINUTES:
February 19, 2020 – Special Meeting Minutes

Motion: Commissioner Corbin entertained a motion to recommend approval of the February 19, 2020 meeting minutes including the following modifications under Item 10, Communication and Announcements by: Commissioner Corbin - change “mort” to “more”, cite: Commissioner Aikens – change “Co-Chair” to “Vice Chair”, include a statement from Commissioner Reilly - The Friends of the Rotary Nature Center are making plans the celebrate the 150th Anniversary of the Lake Merritt Wildlife Refuge. Moved by: Commissioner Ha. Second by: Commissioner Moore. Vote: 7 Yes: Aikens, Cole, Corbin, Ha, Moore, Reilly, and Wolfson. Motion: Passed.

Notes: Commissioner Howze arrived after the motion to approve the February minutes.

4. DIRECTOR’S REPORT

Director Williams provided the following report to the Commission:

Budget and Staff:

- The City is facing a \$100 mil deficit as a result of the shelter in place order due to the COVID-19 virus.

- \$1 million from the Sugar Sweetened Beverage Tax (SSBT) Fund has been removed from the OPRYD's budget.
- PPT's previously on non-pay status are now reporting for Town Camp assignments.
- City leadership is in conversation with union representatives regarding the possibility of imposing furlough days to help address the budget deficit.
- 7 positions are frozen
- Purchases and refurbishments are on hold.

Park Amenities:

- Park parking lots are reopen
- High contact sports and other shared amenities remain closed:
 - Basketball Courts
 - Soccer Fields
 - Golf Courses
 - Tennis Courts
 - Playground Equipment
 - Golf Courses
 - Tennis Courts

Park Ambassadors:

- Park Ambassadors are walking city parks, including Lake Merritt in teams of 3 - 4 on Fridays – Sundays from 12:00 p.m. – 5:00 p.m. Park visitors receive face coverings, handout for COVID-19 testing sites and are engaged in conversations about park rules as applicable.
- City leadership has requested the Ambassador Program be continued after its initial deployment ends.

Town Camp:

- Neighborhood Town Camp was developed to address the necessary social distancing regulations due to COVID-19. As a result, our maximum camper capacity this season is 500 participants. Children and youth will be organized into groups of 10. The play groups will retain the same members for the duration of this year's camping experience.
- Six (6) weeks of camping will be offered in two (2) three (3) week sessions
 - Monday through Friday – 8:30 a.m. to 5:00 p.m.
 - Session I – June 29th – July 7th
 - Session II – July 7th -August 7th

Accreditation:

On December 13, 2019, OPRYD submitted an application for Accreditation to the National Recreation and Park Association's (NRPA) Commission for Accreditation of Park and Recreation Agencies (CAPRA). Completion of the accreditation process will take 2 years from the date of application.

Childcare:

The 'Essential Childcare' (ECC) program presented OPRYD's first opportunity to implement programming based upon standards advised by Alameda Co. (& the C.D.C).

- Fortified safety protocols, including infection control measures (i.e. daily health screening for staff and participants), frequent hand washing and surface cleaning and sanitizing
- Introduction of the "Pod" concept (small group activities that encourage individual play and/or promote physical distancing)
- Mandatory usage of PPE (Personal Protective Equipment)

The Essential Childcare program concluded 6/12/20 in preparation for Town Camp.

Food Distribution:

- Four OPRYD recreation centers including Ira Jenkins, Allendale, Franklin and Willie Keys, distributed 300 meals to 50 children and adults with disabilities. Each recipient received 3 breakfast and 3 lunch meals.
- In one day, OPRYD, the City's Department of Human Services and Flo's Friendly Kitchen distributed 1200 meals to Oakland residents.

5. MODIFICATIONS TO THE AGENDA:

6. CONSENT NEW BUSINESS:

None

7. NEW BUSINESS:

A. Request For The Parks And Recreation Advisory Commission To Adopt A Motion Recommending That the City Council Assign The Role Of Citizen Oversight For Portions Of The 2020 City Of Oakland Parks And Recreation Preservation, Litter Reduction, And Homelessness Support Act (Measure Q, 2020).

The Parks and Recreation Advisory Commission (PRAC) was asked if it would adopt a motion recommending that the Oakland City Council assign the PRAC the role of "citizen oversight" for Measure Q under the 2020 City of Oakland Parks and Recreation Preservation, Litter Reduction, and Homelessness Support Act (Measure Q, 2020) approved by Oakland voters on March 3, 2020.

The Measure created a special tax for 20 years to support parks maintenance, homelessness support services, and stormwater infrastructure planning and enhancements. Taxes will be levied beginning fiscal year 2020-2021 through fiscal year 2039-2040 and the revenue will be limited to the following purposes:

- 64% for parks, landscape maintenance and recreational services
- 30% for services to address homelessness and enable unsheltered and unhoused residents to access temporary shelters, transitional and supportive housing, and permanent housing.
- 5% for services and projects to address water quality and litter reduction, including by maintaining and cleaning stormwater and trash collection systems.

- 1% to cover the costs of auditing and evaluating programs, strategies and services undertaken pursuant to the measure.

Measure Q stipulates that the City Council assign one or more existing Boards or Commissions the responsibility for citizen oversight of this measure. The Boards and Commissions shall review reports related to the expenditure of the revenue collected by the City and provide reports to the City Council.

The PRAC would be required to

- Review proposed parks and water quality related expenditures to ensure that they meet the objectives, uses and allocations as stated in Measure Q. The special taxes may only be used for the purposes set forth in Section 3 Measure Q.
- Ensure that the City complies with the “Maintenance of Effort” section of Measure Q which requires the City to allocate the same level of funds for parks and the stormwater system as were appropriated in the City’s 2019-21 Adopted Policy Budget for fiscal year 2019-2020. If the City fails to do so, the City may not expend revenues collected under Measure Q.
- Review financial audits which analyze and report upon the use of funds in accordance with the Measure Q and standard governmental accounting practices.
- Meet periodically to review reports on Measure Q.

Members from the Parks and Recreation Foundation (OPRF) added that the Budget Advisory Commission was initially considered for the role of citizen oversight of Measure Q, but because of the PRAC’s direct knowledge of the parks system, the Commission was asked to consider accepting the responsibility. And, that by accepting the oversight of Measure Q, the relationship between the PRAC, OPRF and Oakland Parks, Recreation and Youth Development (OPRYD) would be strengthened.

The Commission inquired about its authority and actions to be taken should issues arise regarding the Measure. Staff informed the PRAC that, like other items brought before the body, it would retain its advisory role regarding Measure Q and that the current flow of information would remain the same as cited in Ordinance 11731. Supporting documents regarding Measure Q will be made available to the Commission for review to better understand oversight requirements.

Reporting Oakland Public Works (OPW) staff, Angela Robinson Pinon, acknowledged that she would be assigned to the PRAC through August 2020 for review of Measure Q. After a brief discussion, it was unclear if an OPW staff would be present at every PRAC meeting. Director Williams asked if staff would be assigned to facilitate Capital Improvements Projects. Chair Corbin reported that PRAC receives ongoing inquiries from the public regarding a variety of park maintenance related issues and other concerns surfacing throughout the parks system. She suggested the assignment of OPW staff to

the PRAC would support the Commission's efforts. Ms. Robinson Pinon will advance the question to OPW leadership and report back

Motion: Commissioner Corbin entertained a motion to recommend approval to adopt a motion recommending that the Oakland City Council assign the role of citizen oversight to the PRAC for Measure Q expenditures under the categories of parks, recreation and stormwater related uses as authorized under the Measure. **Moved by:** Commissioner Reilly. **Second by:** Commissioner Cole. **Vote: 7 Yes:** Cole, Corbin, Ha, Howze, Moore, Reilly, and Wolfson. **Motion: Passed.**

Note: Commissioner Aikens departed before the motion was made on item 7A.

8. PLANNING AND CONDITIONAL USE PERMITS:
9. COMMITTEE AND/OR ADVISORY COUNCIL UPDATES:
10. COMMUNICATION AND ANNOUNCEMENTS:
11. CONTINUATION OF OPEN FORUM:
12. ADJOURNMENT: 5:36 P.M.

Respectfully submitted,

/s/ J. Nicholas Williams
J. Nicholas Williams
Secretary

/s/ Diane L. Boyd
Diane L. Boyd
Recording Secretary

Next Meeting:
Wednesday, July 8, 2020

TeleConference



**CITY OF OAKLAND
Planning & Building Department**

TO: C.N.E. Corbin, Chair, Parks and Recreation Advisory Commission
FROM: Dara O’Byrne, *Acting* Planner IV, Planning & Building Department, Development Planning Division
DATE: July 8, 2020
SUBJECT: **Informational Report On The Approved Parks For The Oak Knoll Mixed-Use Community Project, Which Will Be Dedicated To The City Of Oakland As City Parks.**

SUMMARY

The Oak Knoll Mixed Use Community is located on the former Oak Knoll Naval Medical Center Property at 8750 Mountain Boulevard, bounded by Keller Avenue and Mountain Boulevard. The Project consists of a Master Planned community on approximately 191 acres consisting of 918 residences, 72,000 square feet of neighborhood commercial, 14,000 square feet of civic/commercial use. The Project incorporates 78.6 acres of Open Space and Parks, including approximately 6.6 acres of public parks. The four public parks were presented and approved by City Council on November 28, 2017. The associated Final Development Plan for the Master Developer Site Improvements included final schematic design for the parks, which was approved by the City Council on November 28, 2017.

The approved park plans are included in Exhibit A, Final Development Plan: Master Developer Site Improvements. The four parks include:

- Creekside Park. Creekside Park is located along Mountain Boulevard at the entrance to Oak Knoll, between Creekside Parkway and Creekside Loop, and adjacent to Rifle Range Creek. The park is approximately 1.1 acres. It is a passive park with a play lawn, multi-use trail, entrance feature, and benches. The park includes Public Art, which was reviewed by the Oakland Public Arts Advisory Committee in August 2019. (Exhibit A pages L026-L028)
- North Neighborhood Park. North Neighborhood Park is located in the northern part of Oak Knoll, near the Creekside Parkway entrance on Keller Avenue, adjacent to Rifle Range Creek. The park is approximately 3 acres. It is an active park with a play lawn, children’s play area, picnic tables, pathway, and park seating. (Exhibit A pages L029-L031)
- Village Pocket Park. Village Pocket Park is centrally located in Oak Knoll, off of Creekside Loop, across from the Club Knoll Community Center. The park is approximately 0.2 acres. It is a passive park with a passive play lawn, formal garden, benches, and a garden pathway. (Exhibit A pages L032-L034)
- Oak Knoll Memorial Park. Oak Knoll Memorial Park is located in the northern portion of the Oak Knoll development near Keller Avenue, but accessed by trail. The park is approximately 2.3 acres. It is a passive park in an existing hillside meadow with benches and a trail. (Exhibit A page L035)

The parks will be dedicated to the City of Oakland and will be maintained by a Community Facilities District (explained below). The approved park plans are included in Exhibit A to this report.

FISCAL IMPACT

The parks will be dedicated to the City of Oakland and will be maintained by a Community Facilities District. The City of Oakland is currently in the process of forming a Community Facilities District (CFD) which is a public facilities maintenance fund to be administered by the City of Oakland specifically for maintenance of the public facilities in the Oak Knoll Mixed Use Community. The CFD charges a rate to property owners in the service area for specified maintenance. In this way, delivery and maintenance of the four new parks discussed in this report will have no fiscal impacts for the City of Oakland.

PROJECT / PROGRAM DESCRIPTION

The Oak Knoll Mixed Use Community project includes the provision of four public parks. The location and design of the four parks was previously approved by the City Council. The developer will build the parks and then dedicate the parks to the City of Oakland. As noted above, maintenance of the parks will be paid for and managed by the CFD.

BACKGROUND / LEGISLATIVE HISTORY

The following provides the timeline for approval of the Oak Knoll Mixed Use Community, including the approval of the Final Development Plan for Master Developer Site Improvements, which includes the four public parks:

- March 9, 2015, the developer submitted an application for environmental review to the Bureau of Planning to develop 935 residential units, over 84 acres of parks and open space and over 72,000 square feet of neighborhood serving commercial space, including an application to rezone the Project site to a new Zoning district, the D-OK Oak Knoll District and Zone Regulations, including new Zoning Districts D-OK-1 through D-OK-7, with accompanying new Zoning Text and Zoning Map changes (Project); and
- March 20, 2015, a Notice of Preparation of a Draft Supplemental Environmental Impact Report ("SEIR") for the Project was published pursuant to the California Environmental Quality ("CEQA"); and
- July 27, 2016, October 26, 2016, December 14, 2016 the Preliminary Development Plan and the Final Development Plan for Master Developer Site Improvements were presented to the Design Review Committee; and
- October 18, 2017 the City Planning Commission, after conducting and closing the public hearing, recommended that the City Council: (a) adopt the required CEQA findings, including certifying the SEIR and rejecting alternatives as infeasible; (b) adopt the Standard Conditions of Approval and Mitigation Monitoring and Reporting Program ("SCAMMRP"); and (c) approve the Project including Rezoning, based in part upon the Findings contained in the October 18, 2017 City Planning Commission Agenda Report and attachments ("City Planning Commission Report"), including The Final Development Plan for Master Developer Site Improvements, which includes the four public parks ; and
- October 31, 2017 the City Council's Community and Economic Development Committee recommended certification of the SEIR, and approval of the Project, including the new D-OK Oak Knoll District Zone Regulations and Zoning Map changes for the Project site; and
- November 28, 2017 the City Council approved the D-OK Oak Knoll District Zone Regulations and Zoning Map changes for the Project site.

- July 2019 The Oakland Public Art Advisory Committee received a presentation on the Oak Knoll Public Art Plan (five projects).
- August 7, 2019 The Oakland Public Art Advisory Committee reviewed and approved unanimously the project design proposal by artist Yoshikawa Wright, to be placed on City property in Creekside Park.

RECOMMENDATION

Staff recommends that the PRAC accept this informational report.

Respectfully submitted,

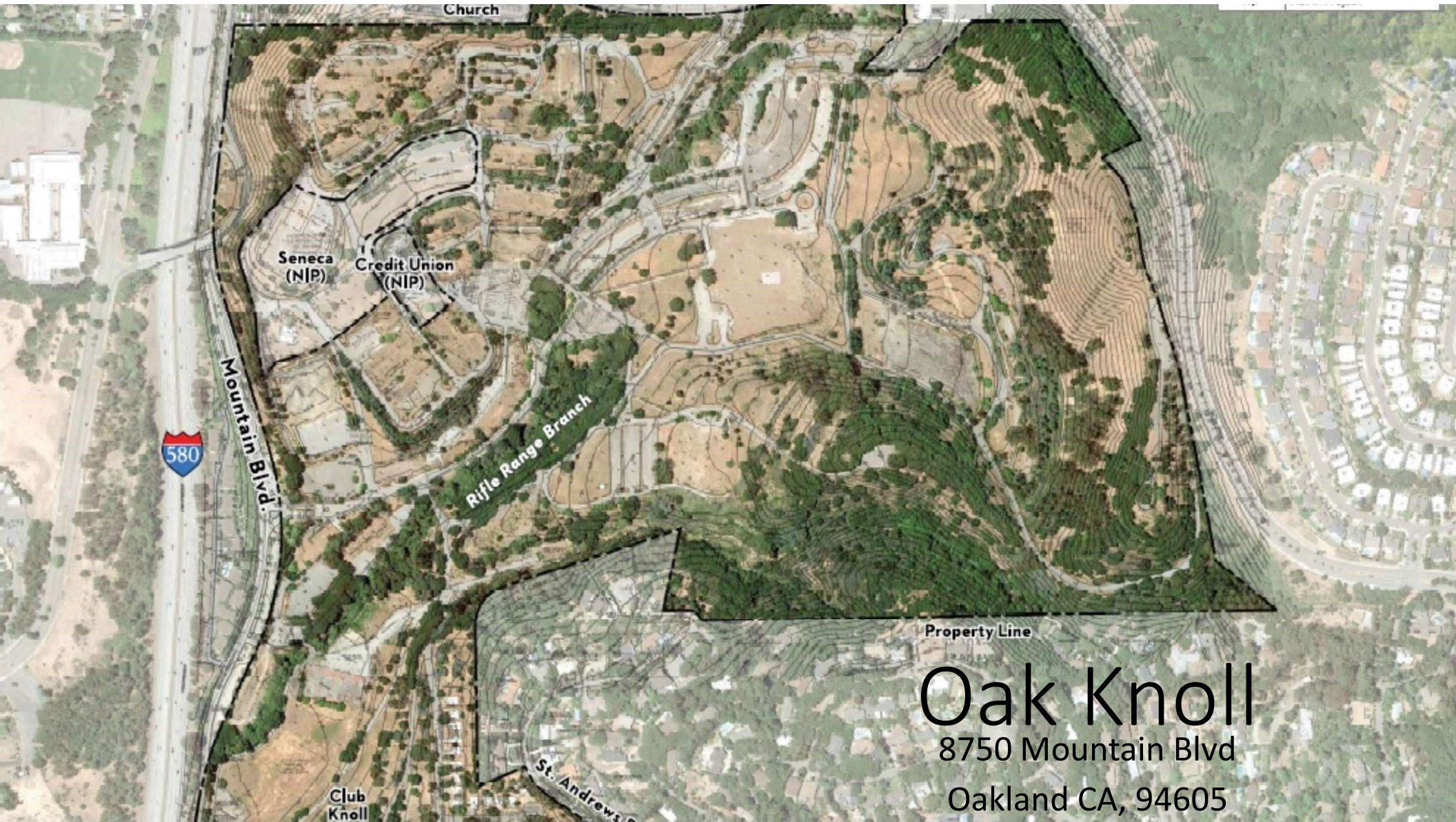
Prepared by: Dara O’Byrne

Acting Planner IV, Planning & Building, Development Planning Division

Approved by: Catherine Payne

Acting Development Planning Manager, Planning & Building Department

Attachments: Exhibit A – *Oak Knoll Final Development Plan for Master Developer Site Improvements.*



Mountain Blvd.

Seneca (NIP)

Credit Union (NIP)

Rifle Range Branch

Club Knoll

St. Andrews

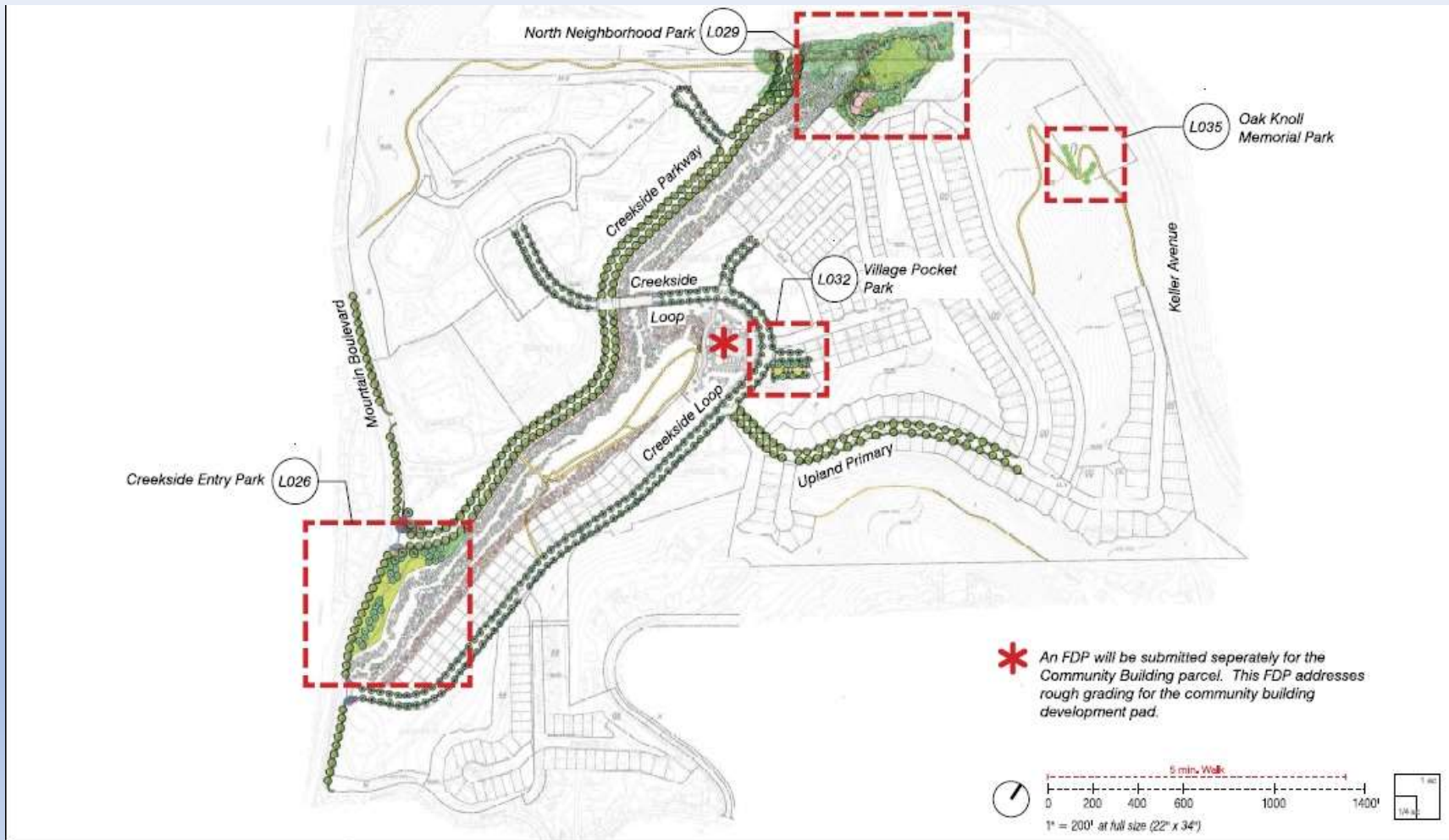
Property Line

Oak Knoll

8750 Mountain Blvd

Oakland CA, 94605

Public Parks - Overview



Creekside Entryway Park

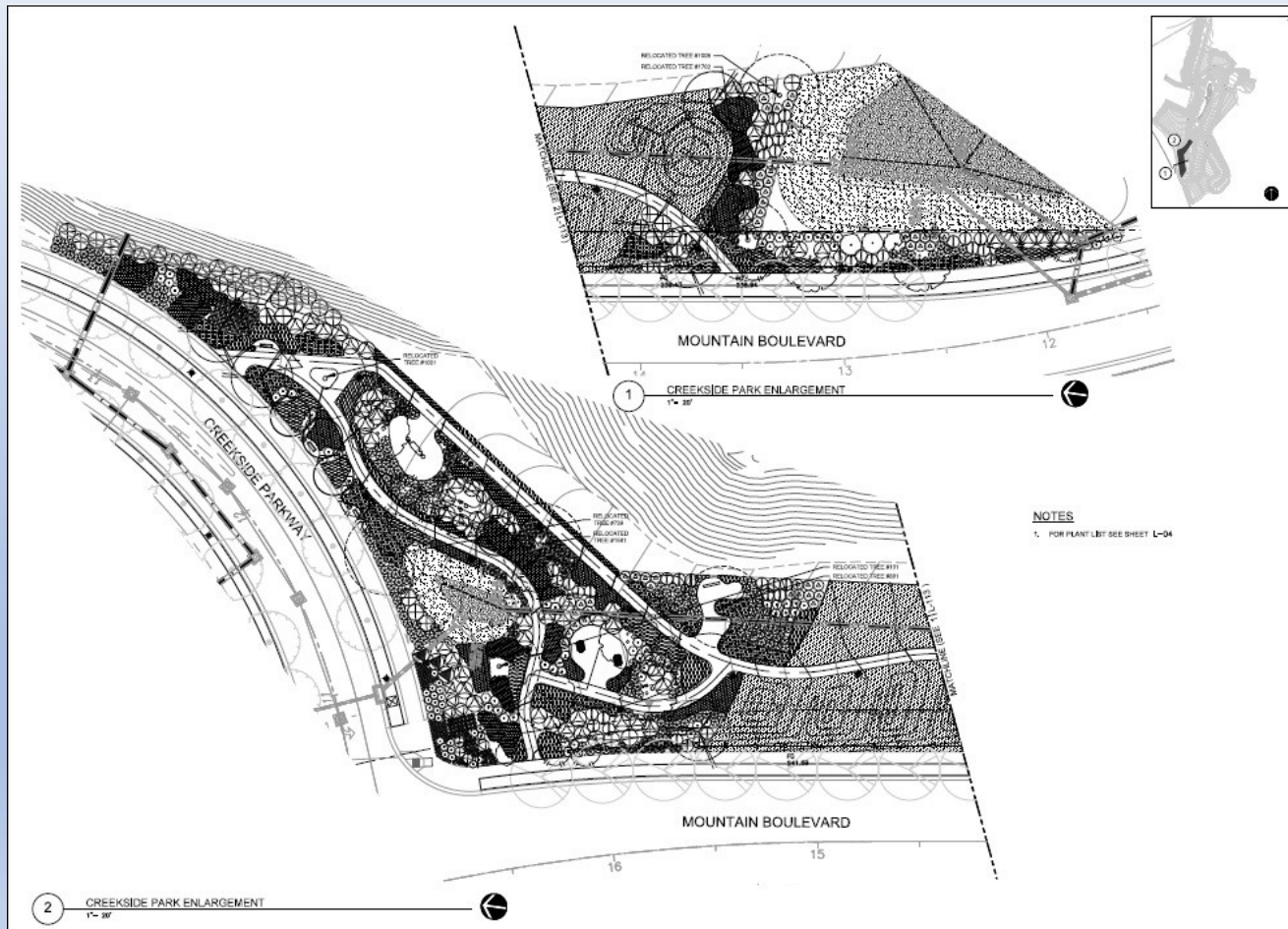


Creekside Entryway Park (Concept)



PARK LEGEND	
#	Use/Activity
1	Play Lawn (passive/informal use)
2	Benches (quiet seating with riparian view)
3	Trash Container, Dog Waste Dispenser
4	Street Parking
5	Concrete or Asphalt Path with Metal Edging, 6' Wide (walking/jogging)
6	Multi-Use Trail
7	Sidewalk
8	Entrance Feature (Stone Piers, low walls and special planting)
9	Park Lighting
10	Detention Basin

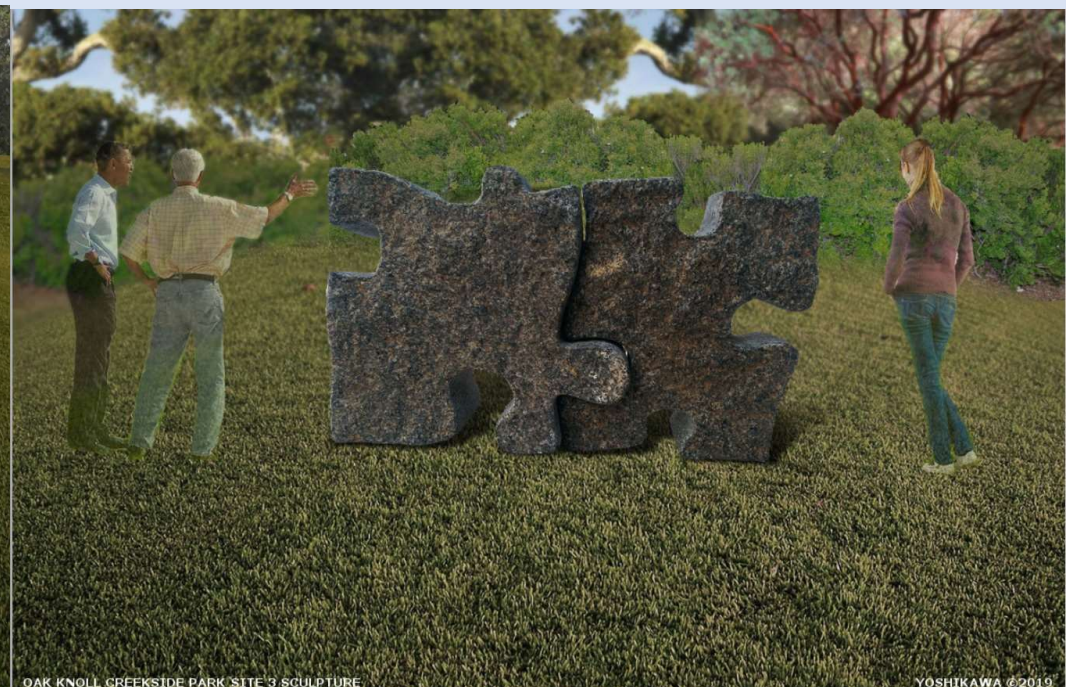
Creekside Entryway Park (Plans)



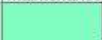





Creekside Entryway Park Art





Creekside Entryway Park Art



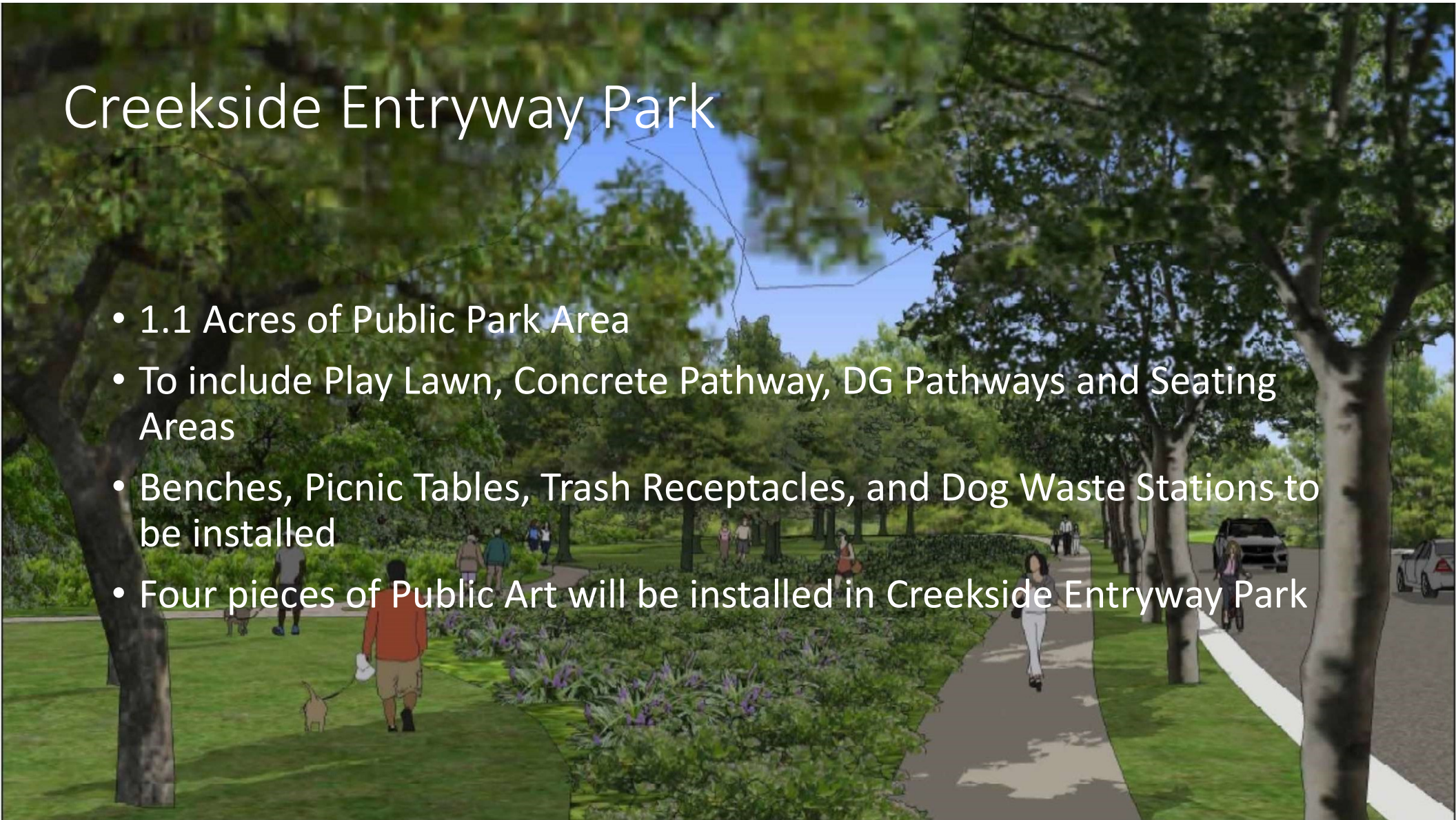
Creekside Entryway Park (Plantings)

GROUND PLANE PLANTING LEGEND	
SYMBOL	DESCRIPTION
Cell A: Sod Lawn (irrigated, low water use and low maintenance recreational turf)	
	90-10 Delta Bluegrass mix form
Cell B: Mixed planting of Native Meadow Grasses (irrigated, low water use, low maintenance)	
	Delta Bluegrass No-Mow sod form meadow grass
	<i>Carex praegracilis</i> / Clustered field Sedge
	<i>Carex pansa</i> / California Meadow Sedge
	<i>Carex divulsa</i> / Berkeley Sedge
Cell C: Park Woodland	
	<i>Rhamnus californica</i> / Coffeeberry
	<i>Arctostaphylos densiflora</i> / Sentinel manzanita
	<i>Ribes sanguineum</i> / Pink Flowering Currant
	<i>Ribes speciosum</i> / Fuchsia flowered Gooseberry
	<i>Woodwardia fimbriata</i> / Western Sword Fern
	<i>Iris douglasiana</i> 'Canyon Snow' / Native Iris
	<i>Festuca rubra</i> 'Molate' / Molate Red Fescue
	<i>Polypodium californicum</i> / California Polypody Fern
	<i>Symphoricarpos mollis</i> / Trailing Snowberry
	<i>Sambucus caerulea</i> / Blue Elderberry

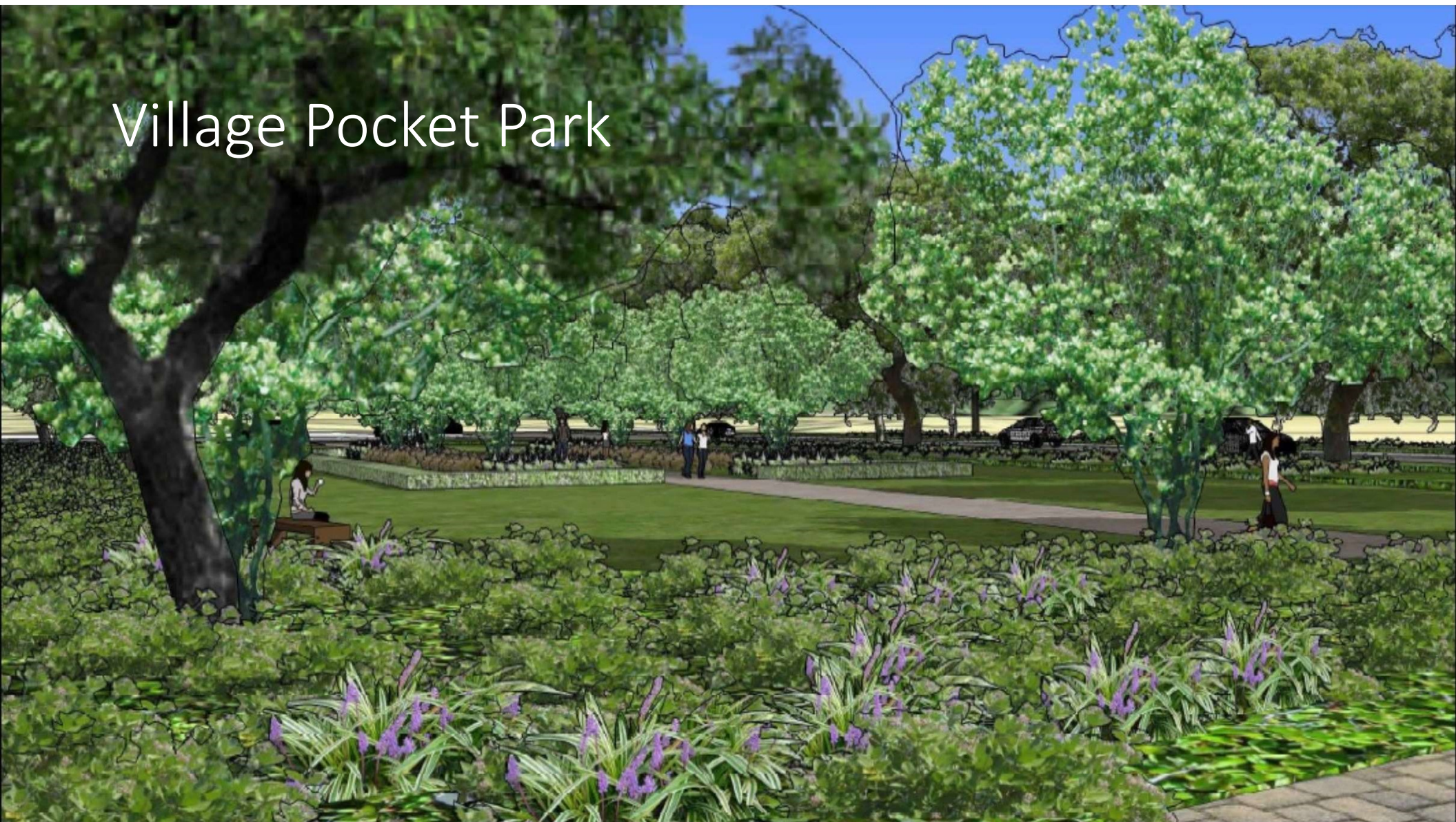
				
Delta Bluegrass No-Mow sod form meadow grass	<i>Carex praegracilis</i> Clustered field Sedge	<i>Carex pansa</i> California Meadow Sedge	<i>Carex divulsa</i> Berkeley Sedge	<i>Rhamnus californica</i> Coffeeberry
				
<i>Arctostaphylos densiflora</i> Sentinel manzanita	<i>Ribes sanguineum</i> Pink Flowering Currant	<i>Ribes speciosum</i> Fuchsia flowered Gooseberry	<i>Woodwardia fimbriata</i> Western Sword Fern	
				
<i>Iris douglasiana</i> 'Canyon Snow' Native Iris	<i>Festuca rubra</i> 'Molate' Molate Red Fescue	<i>Polypodium californicum</i> California Polypody Fern	<i>Symphoricarpos mollis</i> Trailing Snowberry	<i>Sambucus caerulea</i> Blue Elderberry

Creekside Entryway Park

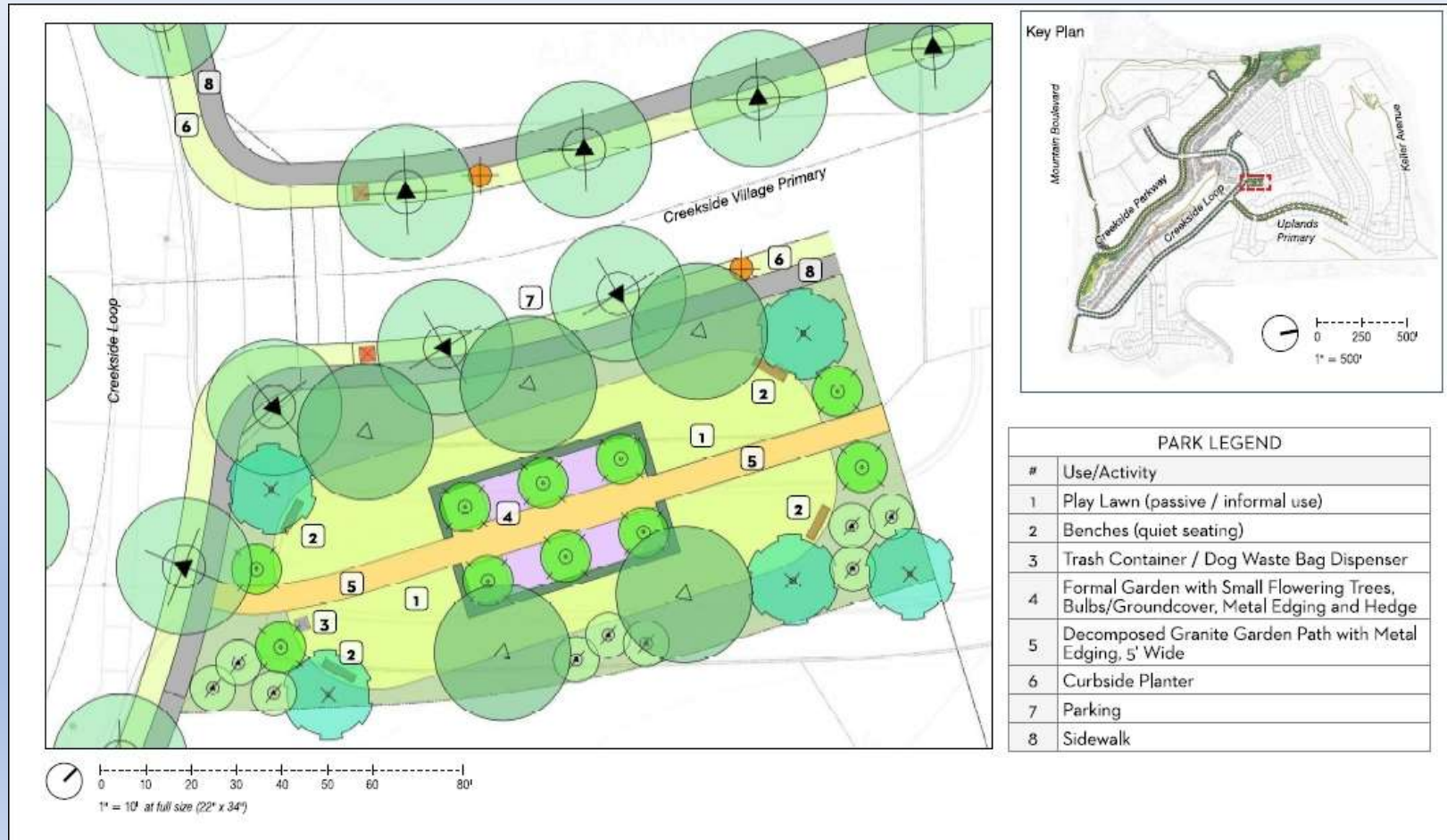
- 1.1 Acres of Public Park Area
- To include Play Lawn, Concrete Pathway, DG Pathways and Seating Areas
- Benches, Picnic Tables, Trash Receptacles, and Dog Waste Stations to be installed
- Four pieces of Public Art will be installed in Creekside Entryway Park



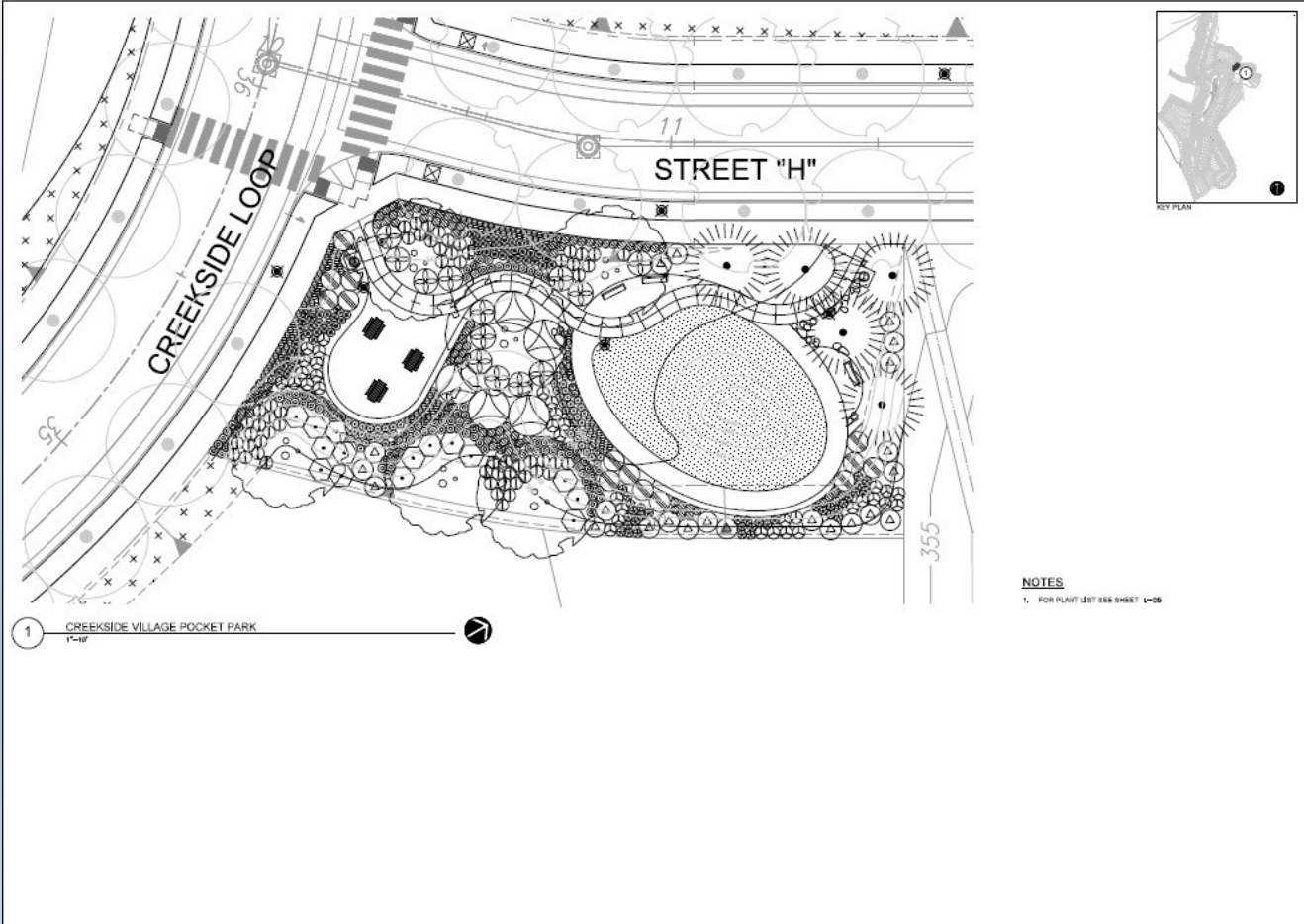
Village Pocket Park



Village Pocket Park (Concept)



Village Pocket Park (Plans)



Village Pocket Park (Plantings)

GROUND PLANE PLANTING LEGEND						
SYMBOL	DESCRIPTION					
Cell A: Sod Lawn (irrigated, low water use and low maintenance recreational turf)						
	To be selected.					
Cell B: Mixed planting of Native Meadow Grasses (irrigated, low water use, low maintenance)						
	Delta Bluegrass No-Mow sod form meadow grass					
	<i>Carex praegracilis</i> / Clustered field Sedge	<i>Carex pansa</i> / California Meadow Sedge	<i>Carex divulsa</i> / Berkeley Sedge	<i>Iris douglasiana</i> 'Canyon Snow' / Native Iris	<i>Arctostaphylos uva ursi</i> 'Radiant' / Manzanita	
	<i>Carex pansa</i> / California Meadow Sedge					
	<i>Carex divulsa</i> / Berkeley Sedge					
Cell C: Oak Woodland (irrigated)						
	<i>Iris douglasiana</i> 'Canyon Snow' / Native Iris					
	<i>Arctostaphylos uva ursi</i> 'Radiant' / Manzanita	<i>Ceanothus</i> 'Frosty Dawn' / Wild Lilac	<i>Rhamnus californica</i> 'Seaview' / Dwarf Coffeeberry	<i>Festuca rubra</i> 'Molate' / 'Molate' Creeping Red Fescue	<i>Blechnum spicant</i> / Deer Fern	
	<i>Ceanothus</i> 'Frosty Dawn' / Wild Lilac					
	<i>Rhamnus californica</i> 'Seaview' / Dwarf Coffeeberry					
	<i>Festuca rubra</i> 'Molate' / 'Molate' Creeping Red Fescue					
	<i>Blechnum spicant</i> / Deer Fern					
	<i>Carex divulsa</i> / Berkeley Sedge					
Cell D: Formal Garden						
	Bulbs – Dwarf Narcissus					
	Low Hedge – <i>Artemisia schmidtiana</i> 'Silver Mound' / Dwarf <i>Artemisia</i>	<i>Bulbs</i> – Dwarf Narcissus	Low Hedge – <i>Artemisia schmidtiana</i> 'Silver Mound' / Dwarf <i>Artemisia</i>	<i>Helicotricon sempervirens</i> / Blue Oat Grass	Perennials – <i>Nepeta faassenii</i> / Catmint, <i>Lavandula angustifolia</i> 'Munstead' / Dwarf English Lavender	
	Perennials – <i>Nepeta faassenii</i> / Catmint, <i>Lavandula angustifolia</i> 'Munstead' / Dwarf English Lavender					
	<i>Helicotricon sempervirens</i> / Blue Oat Grass					
	<i>Arctostaphylos uva ursi</i> 'Radiant' / Manzanita					

Village Pocket Park

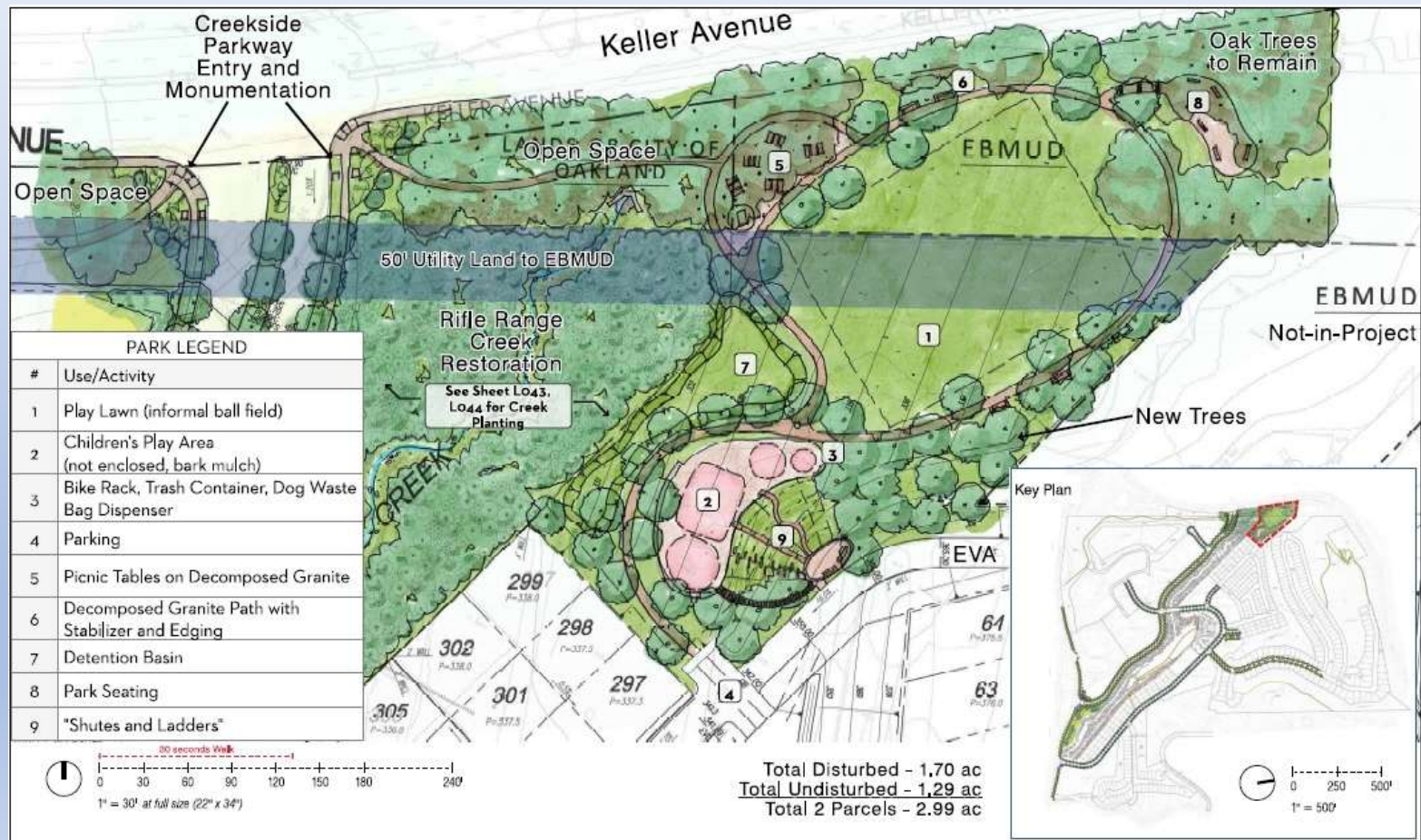
- 0.2 Acres of Public Park Area
- To include Play Lawn, Concrete Pathway, and DG Seating Area
- Benches, Picnic Tables, Trash Receptacles, and Dog Waste Stations to be installed














North
Neighborhood
Tot Lot

North Neighborhood Tot Lot (Concept)



North Neighborhood Tot Lot (Plantings)

GROUND PLANE PLANTING LEGEND	
SYMBOL	DESCRIPTION
	Cell A: Sod Lawn (irrigated, low water use and low maintenance recreational turf)
	To be selected.
	Cell B: Hillside Erosion Control Native Grass Hydroseed Mix (non-irrigated), See Sheet L044 for Seed Mix.
	Cell C: Mixed planting of Native Meadow Grasses (irrigated, low water use, low maintenance)
	Delta Bluegrass No-Mow sod form meadow grass
	<i>Festuca rubra</i> 'Mojate' / 'Mojate' Creeping Red Fescue
	<i>Koeleria micrantha</i> 'Barkoel' / Barkoel June Grass
	<i>Carex praegracilis</i> / Clustered field Sedge
	<i>Carex pansa</i> / California Meadow Sedge
	<i>Carex divulsa</i> / Berkeley Sedge
	Cell D: Oak Woodland Shrub/Groundcover
	30% <i>Rhamnus calif.</i> 'Seaview' / Dwarf Coffeeberry
	35% <i>Ribes sanguineum</i> / Flowering Currant
	35% <i>Arctostaphylos uva-ursi</i> 'Radiant' / 'Radiant' Manzanita groundcover

 <p>Delta Bluegrass No-Mow sod form meadow grass</p>	 <p><i>Festuca rubra</i> 'Mojate' Creeping Red Fescue</p>	 <p><i>Koeleria micrantha</i> 'Barkoel' Barkoel June Grass</p>	 <p><i>Carex praegracilis</i> Clustered field Sedge</p>	
 <p><i>Carex pansa</i> California Meadow Sedge</p>	 <p><i>Carex divulsa</i> Berkeley Sedge</p>	 <p>Perennials – <i>Nepeta faassenii</i> / Catmint, <i>Lavandula angustifolia</i> 'Munstead' / Dwarf English Lavender</p>	 <p><i>Helicotrichon sempervirens</i> Blue Oat Grass</p>	 <p><i>Arctostaphylos uva ursi</i> 'Radiant' / 'Radiant' Manzanita groundcover</p>

North Neighborhood Tot Lot

- 2.7 Acres of Public Park Area
- To include Play Lawn, Play Structures, DG Pathway and Seating Area, Natural Trail, and paved Parking Area
- Benches, Picnic Tables, Trash Receptacles, and Dog Waste Station to be installed



Memorial Park



Memorial Park (Concept)

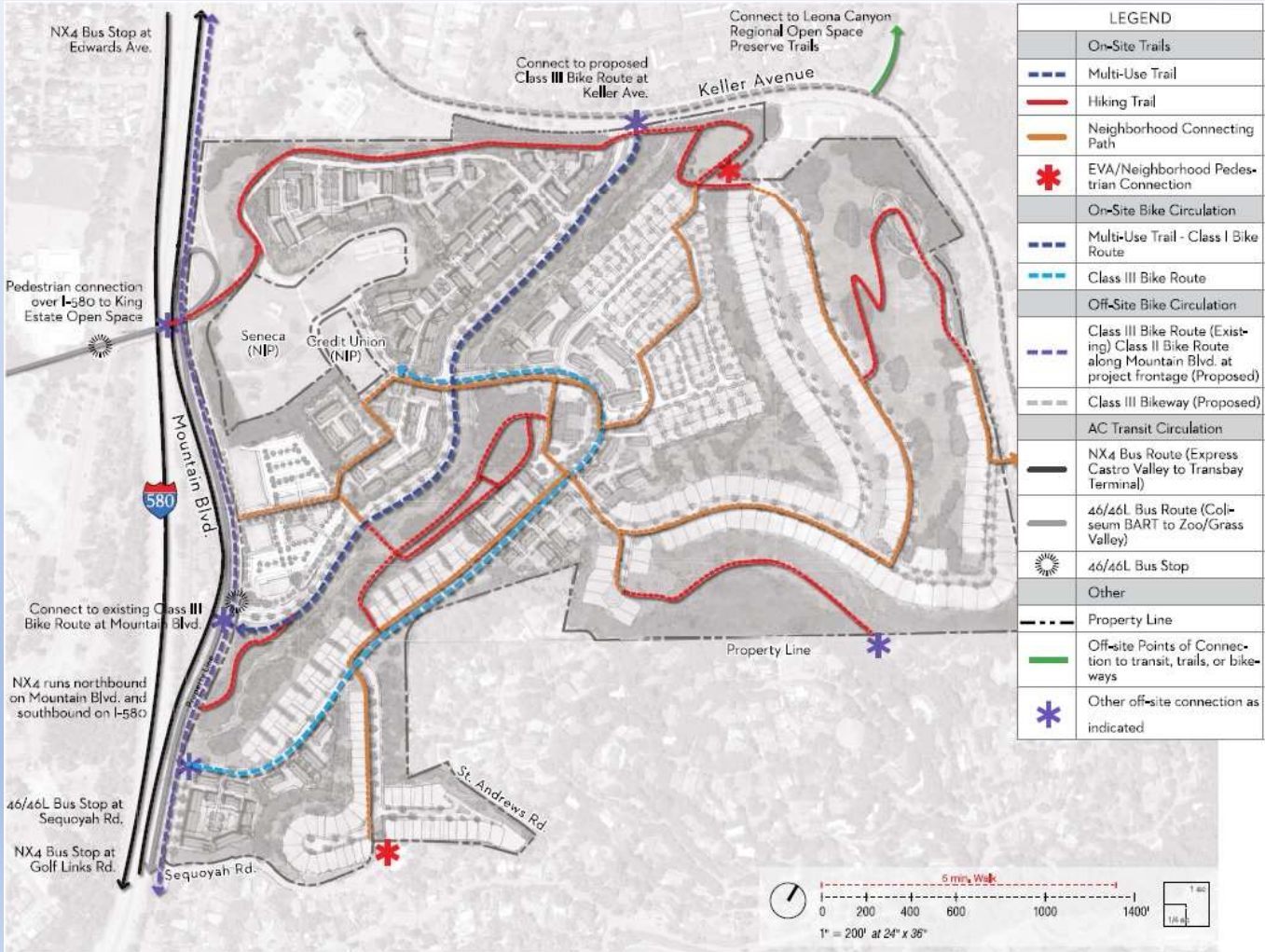


Memorial Park

- 2.3 Acres of Public Park Area
- To include soil cement pathway and Seating Area, will connect to new and existing foot trails
- Benches and Oak Knoll Veteran Memorial to be installed



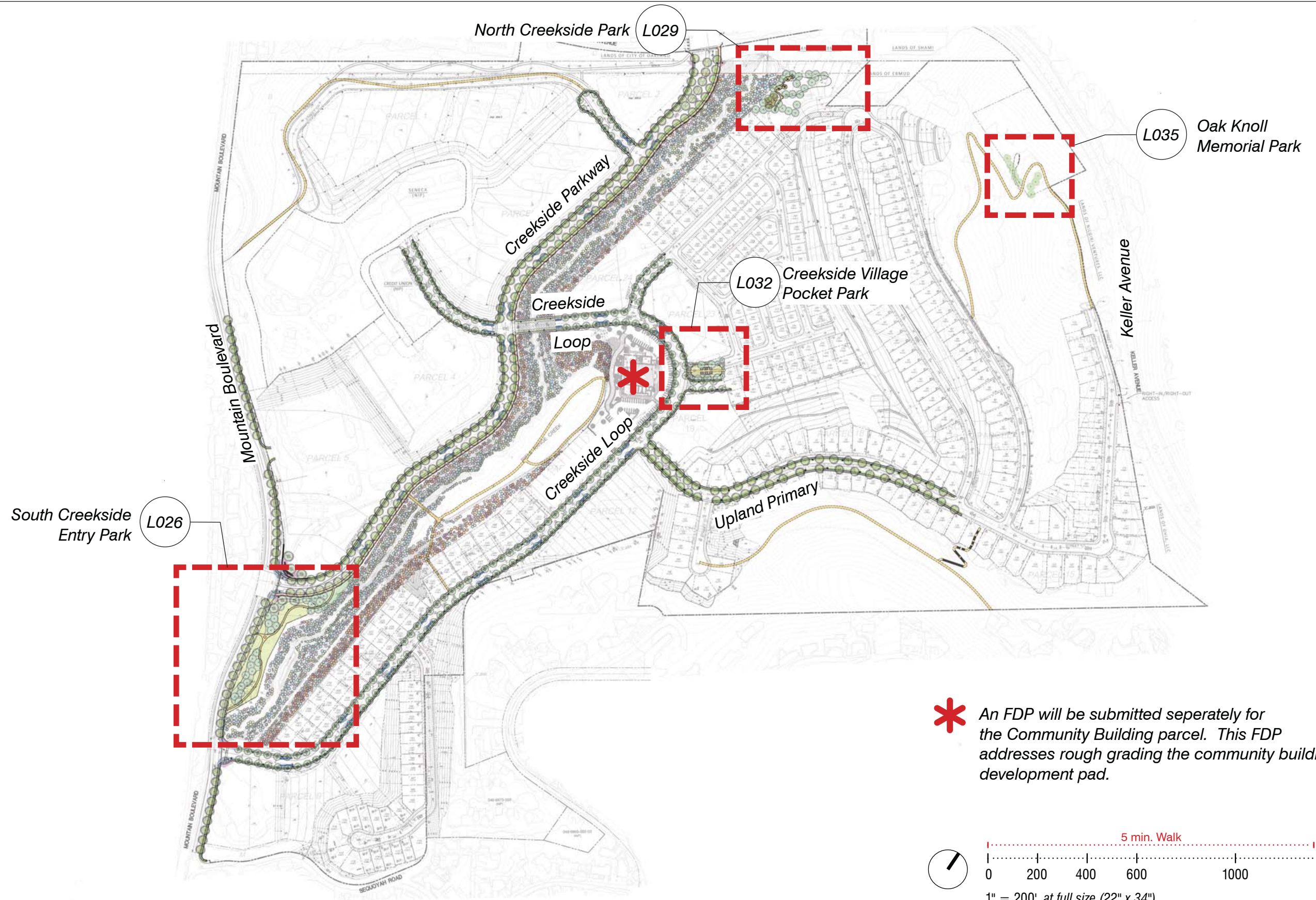
Bike/Hiking Trails





END

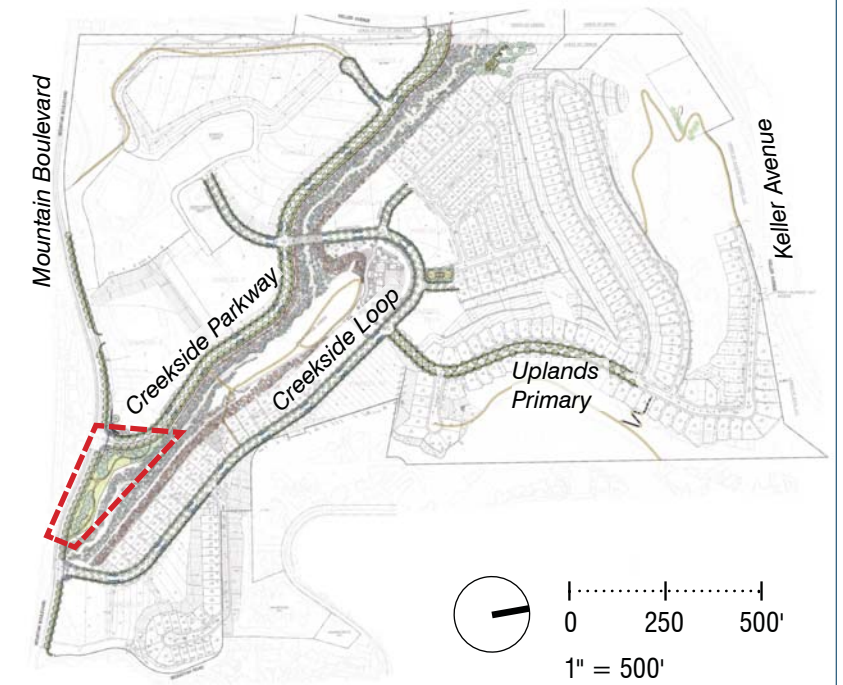
Questions?



***** An FDP will be submitted seperately for the Community Building parcel. This FDP addresses rough grading the community building development pad.



Key Plan



PARK LEGEND

#	Use/Activity
1	Play Lawn (passive/informal use)
2	Benches (quiet seating with riparian view)
3	Trash Container, Dog Waste Dispenser
4	Street Parking
5	Concrete or Asphalt Path with Metal Edging, 6' Wide (walking/jogging)
6	Multi-Use Trail
7	Sidewalk
8	Entrance Feature (Stone Piers, low walls and special planting)
9	Park Lighting



GROUND PLANE PLANTING LEGEND

SYMBOL	DESCRIPTION
--------	-------------

Cell A: Sod Lawn (irrigated, low water use and low maintenance recreational turf)

	90-10 Delta Bluegrass mix form
--	--------------------------------

Cell B: Mixed planting of Native Meadow Grasses (irrigated, low water use, low maintenance)

	Delta Bluegrass No-Mow sod form meadow grass <i>Carex praegracilis</i> / Clustered field Sedge
	<i>Carex pansa</i> / California Meadow Sedge
	<i>Carex divulsa</i> / Berkeley Sedge

Cell C: Park Woodland

	<i>Rhamnus californica</i> / Coffeeberry
	<i>Arctostaphylos densiflora</i> / Sentinel manzanita
	<i>Ribes sanguineum</i> / Pink Flowering Currant
	<i>Ribes speciosum</i> / Fuchsia flowered Gooseberry
	<i>Woodwardia fimbriata</i> / Western Sword Fern
	<i>Iris douglasiana</i> 'Canyon Snow' / Native Iris
	<i>Festuca rubra</i> 'Molate' / Molate Red Fescue
	<i>Polypodium californicum</i> / California Polypody Fern
	<i>Symphoricarpos mollis</i> / Trailing Snowberry
	<i>Sambucus caerulea</i> / Blue Elderberry



Delta Bluegrass No-Mow sod form meadow grass



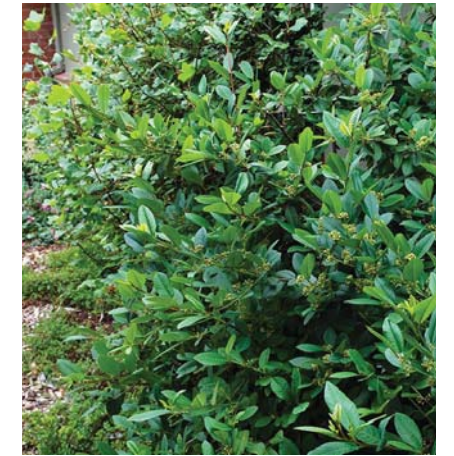
Carex praegracilis Clustered field Sedge



Carex pansa California Meadow Sedge



Carex divulsa Berkeley Sedge



Rhamnus californica Coffeeberry



Arctostaphylos densiflora Sentinel manzanita



Ribes sanguineum Pink Flowering Currant



Ribes speciosum Fuchsia flowered Gooseberry



Woodwardia fimbriata Western Sword Fern



Iris douglasiana 'Canyon Snow' Native Iris



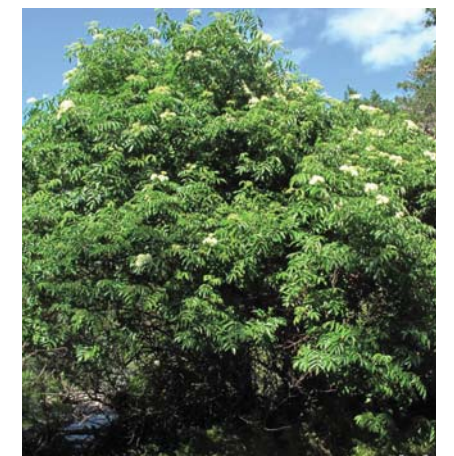
Festuca rubra 'Molate' Molate Red Fescue



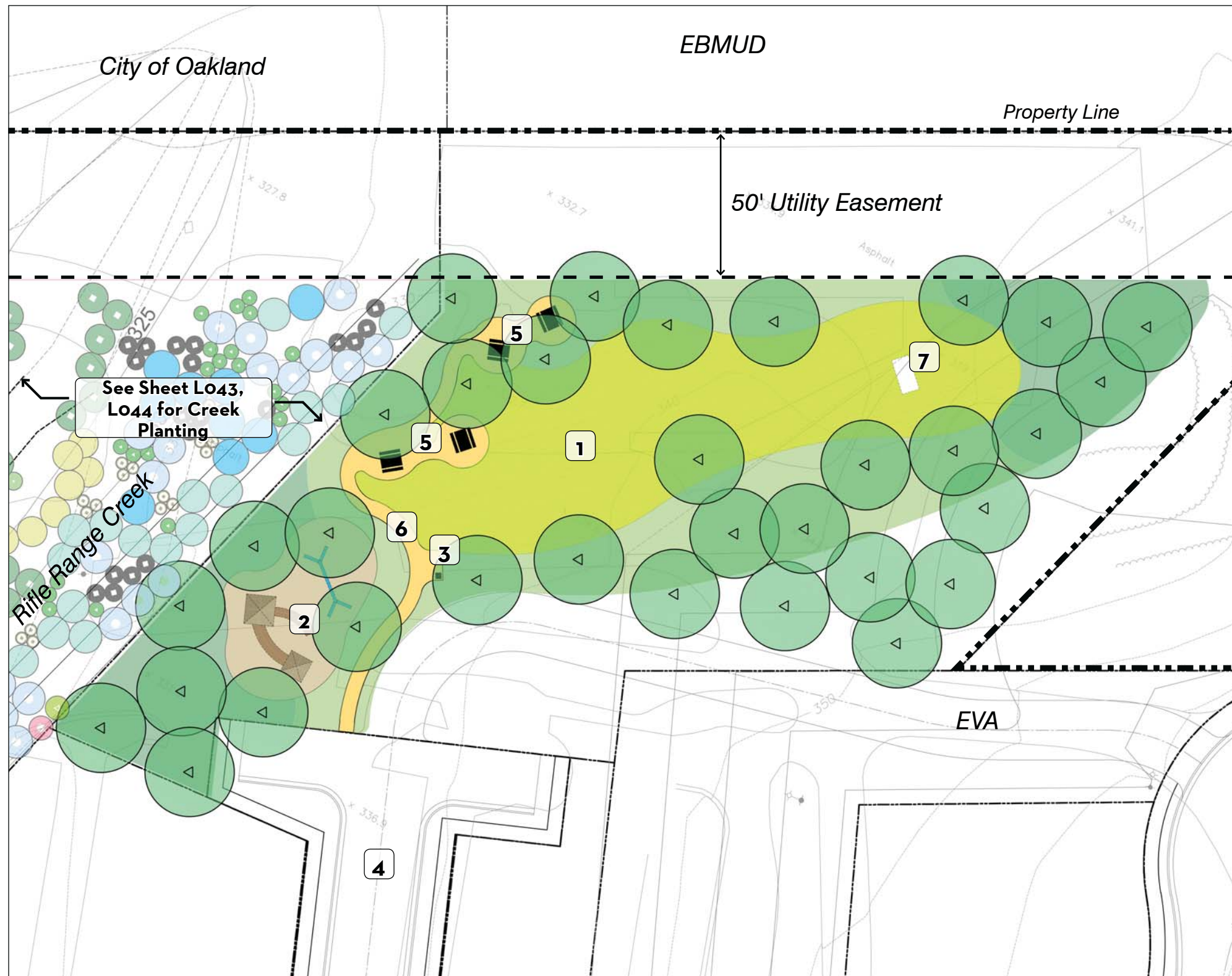
Polypodium californicum California Polypody Fern



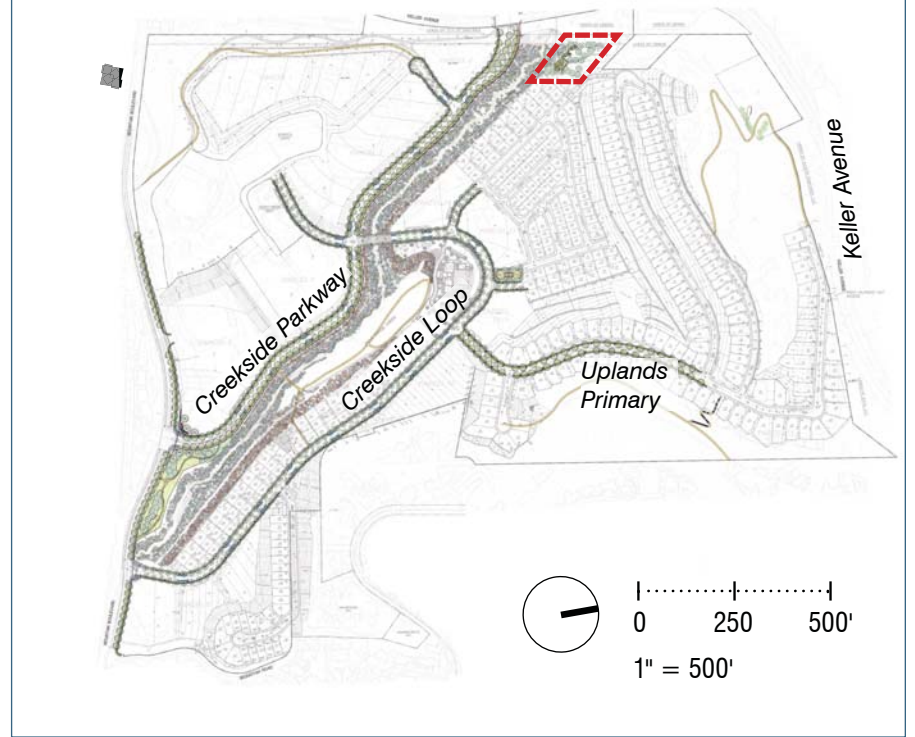
Symphoricarpos mollis Trailing Snowberry



Sambucus caerulea Blue Elderberry



Key Plan



PARK LEGEND

#	Use/Activity
1	Play Lawn (informal use)
2	Children's Play Structures (not enclosed, bark mulch)
3	Bike Rack, Trash Container, Dog Waste Bag Dispenser
4	Street Parking
5	Picnic Tables on Decomposed Granite
6	Decomposed Granite Path with Stabilizer and Edging
7	Soccer Goal



GROUND PLANE PLANTING LEGEND	
SYMBOL	DESCRIPTION
Cell A: Sod Lawn (irrigated, low water use and low maintenance recreational turf)	
	To be selected.
Cell B: Hillside Erosion Control Native Grass Hydroseed Mix (non-irrigated). See Sheet L044 for Seed Mix.	
Cell C: Mixed planting of Native Meadow Grasses (irrigated, low water use, low maintenance)	
	Delta Bluegrass No-Mow sod form meadow grass
	<i>Festuca rubra</i> 'Molate' / 'Molate' Creeping Red Fescue
	<i>Koeleria micrantha</i> 'Barkoel' / Barkoel June Grass
	<i>Carex praegracilis</i> / Clustered field Sedge
	<i>Carex pansa</i> / California Meadow Sedge
	<i>Carex divulsa</i> / Berkeley Sedge
Cell D: Oak Woodland Shrub/Groundcover	
	30% Rhamnus calif. 'Seaview' / Dwarf Coffeeberry
	35% Ribes sanguineum / Flowering Currant
	35% Arctostaphylos uva-ursi 'Radiant' / 'Radiant' Manzanita groundcover



Delta Bluegrass No-Mow sod form meadow grass



Festuca rubra 'Molate' 'Molate' Creeping Red Fescue



Koeleria micrantha 'Barkoel' Barkoel June Grass



Carex praegracilis Clustered field Sedge



Carex pansa California Meadow Sedge



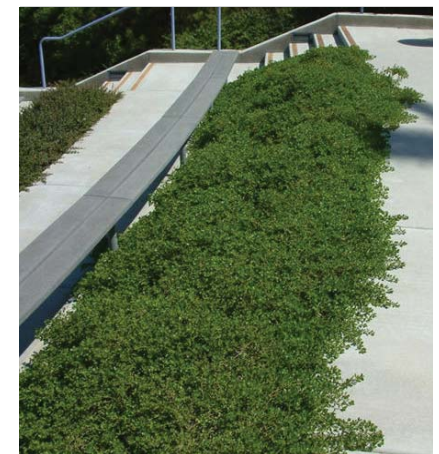
Carex divulsa Berkeley Sedge



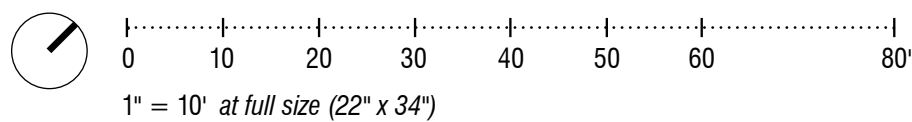
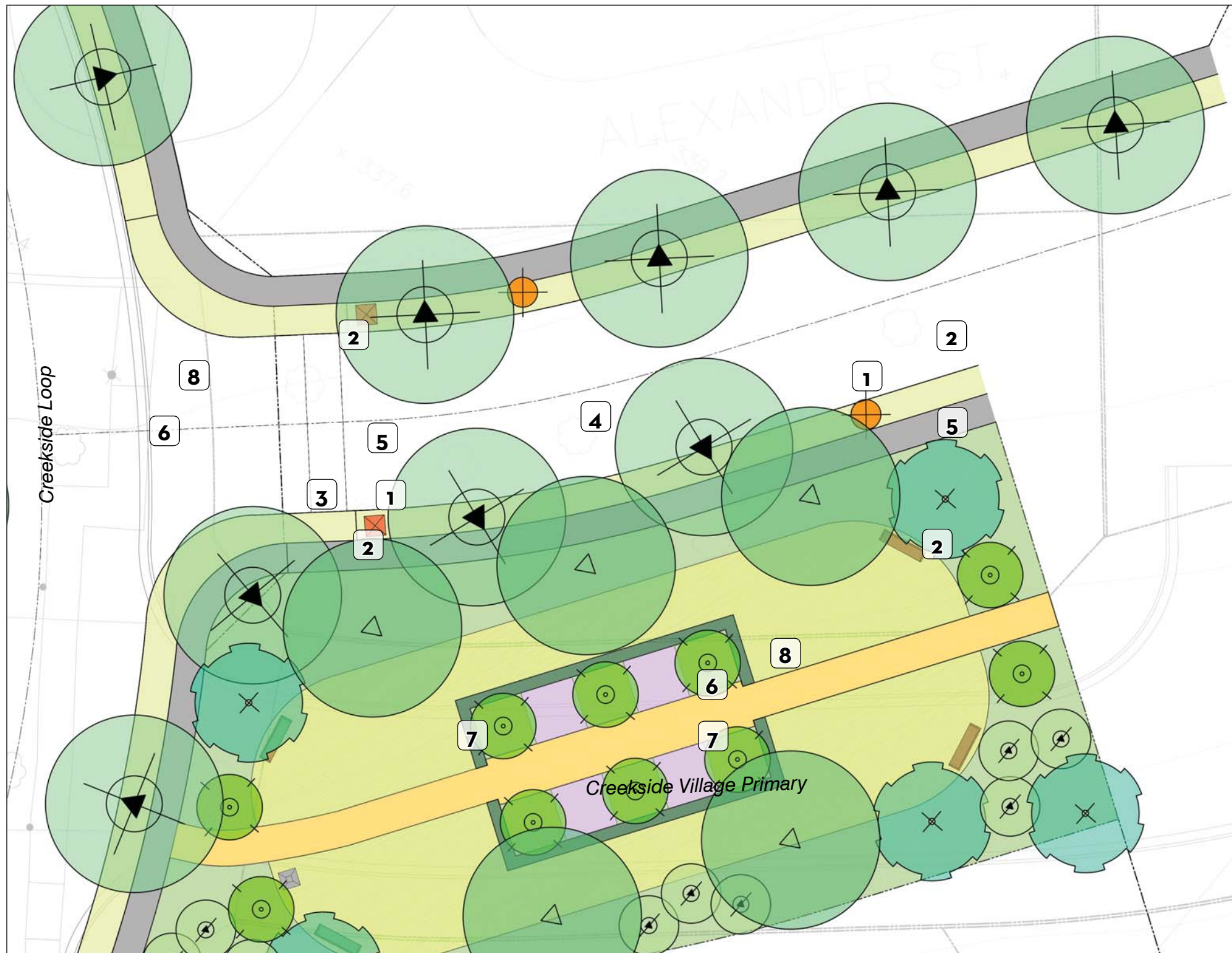
Perennials – *Nepeta faassenii* / Catmint, *Lavandula angustifolia* 'Munstead' / Dwarf English Lavender



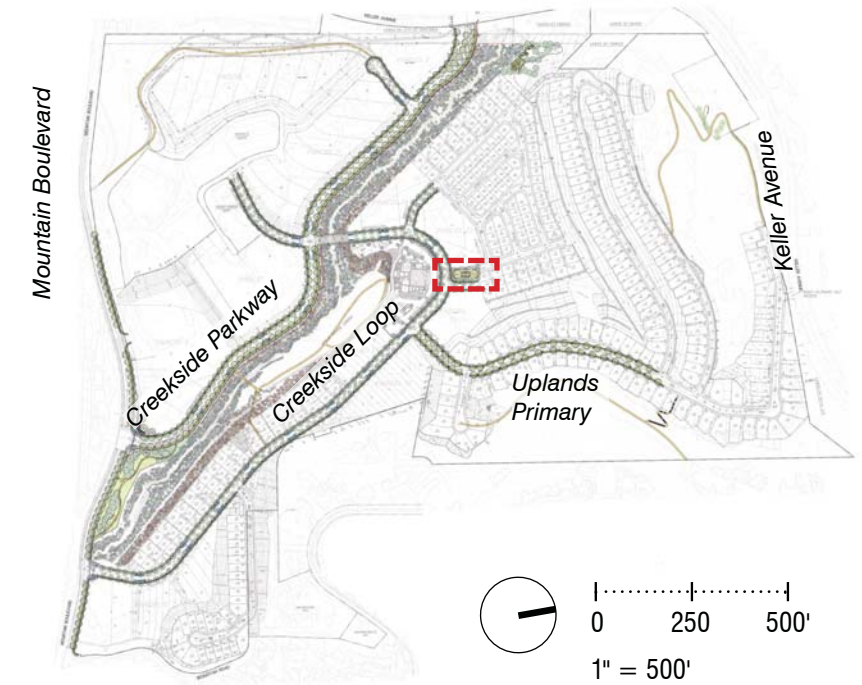
Helicotricon sempervirens Blue Oat Grass



Arctostaphylos uva ursi 'Radiant' / 'Radiant' Manzanita groundcover



Key Plan



PARK LEGEND

#	Use/Activity
1	Play Lawn (passive / informal use)
2	Benches (quiet seating)
3	Trash Container / Dog Waste Bag Dispenser
4	Formal Garden with Small Flowering Trees, Bulbs/Groundcover, Metal Edging and Hedge
5	Decomposed Granite Garden Path with Metal Edging, 5' Wide
6	Curbside Planter
7	Parking
8	Sidewalk



GROUND PLANE PLANTING LEGEND

SYMBOL	DESCRIPTION
--------	-------------

Cell A: Sod Lawn (irrigated, low water use and low maintenance recreational turf)

	To be selected.
--	-----------------

Cell B: Mixed planting of Native Meadow Grasses (irrigated, low water use, low maintenance)

	Delta Bluegrass No-Mow sod form meadow grass <i>Carex praegracilis</i> / Clustered field Sedge
	<i>Carex pansa</i> / California Meadow Sedge
	<i>Carex divulsa</i> / Berkeley Sedge

Cell C: Oak Woodland (irrigated)

	<i>Iris douglasiana</i> 'Canyon Snow' / Native Iris
	<i>Arctostaphylos uva ursi</i> 'Radiant' / Manzanita
	<i>Ceanothus</i> 'Frosty Dawn' / Wild Lilac
	<i>Rhamnus californica</i> 'Seaview' / Dwarf Coffeeberry
	<i>Festuca rubra</i> 'Molate' / 'Molate' Creeping Red Fescue
	<i>Blechnum spicant</i> / Deer Fern
	<i>Carex divulsa</i> / Berkeley Sedge

Cell D: Formal Garden

	Bulbs – Dwarf Narcissus
	Low Hedge – <i>Artemisia schmidtiana</i> 'Silver Mound' / Dwarf Artemisia
	Perennials – <i>Nepeta faassenii</i> / Catmint, <i>Lavandula angustifolia</i> 'Munstead' / Dwarf English Lavender
	<i>Helicotricon sempervirens</i> / Blue Oat Grass
	<i>Arctostaphylos uva ursi</i> 'Radiant' / Manzanita



Carex praegracilis
Clustered field Sedge



Carex pansa
California Meadow Sedge



Carex divulsa
Berkeley Sedge



Iris douglasiana 'Canyon Snow'
Native Iris



Arctostaphylos uva ursi
'Radiant'
Manzanita



Ceanothus 'Frosty Dawn'
Wild Lilac



Rhamnus californica
'Seaview'
Dwarf Coffeeberry



Festuca rubra 'Molate'
'Molate' Creeping Red Fescue



Blechnum spicant
Deer Fern



Bulbs – Dwarf Narcissus



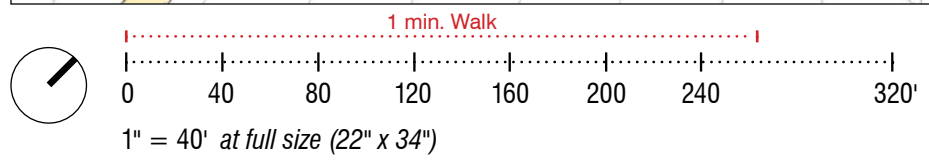
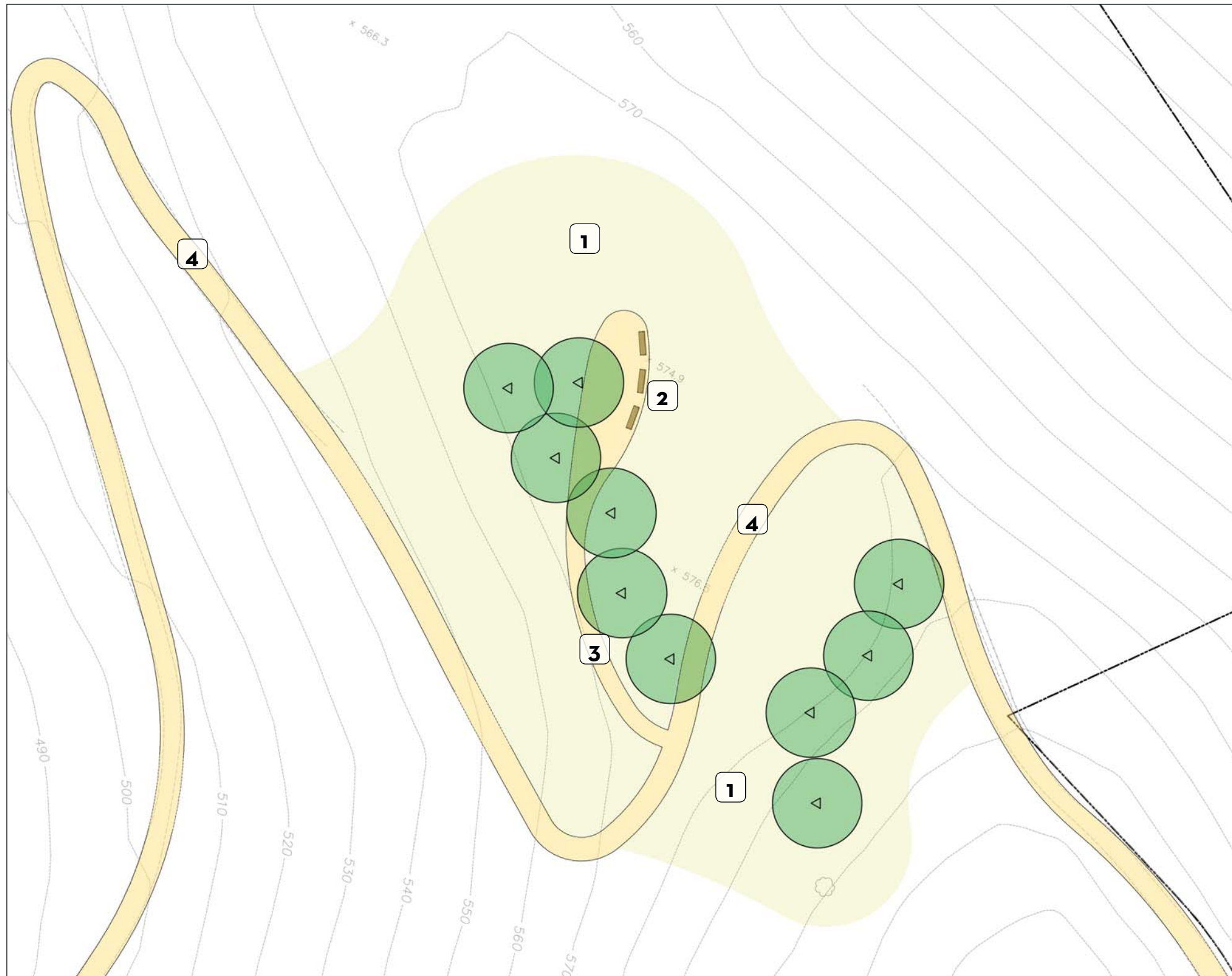
Low Hedge – *Artemisia schmidtiana* 'Silver Mound'
Dwarf Artemisia



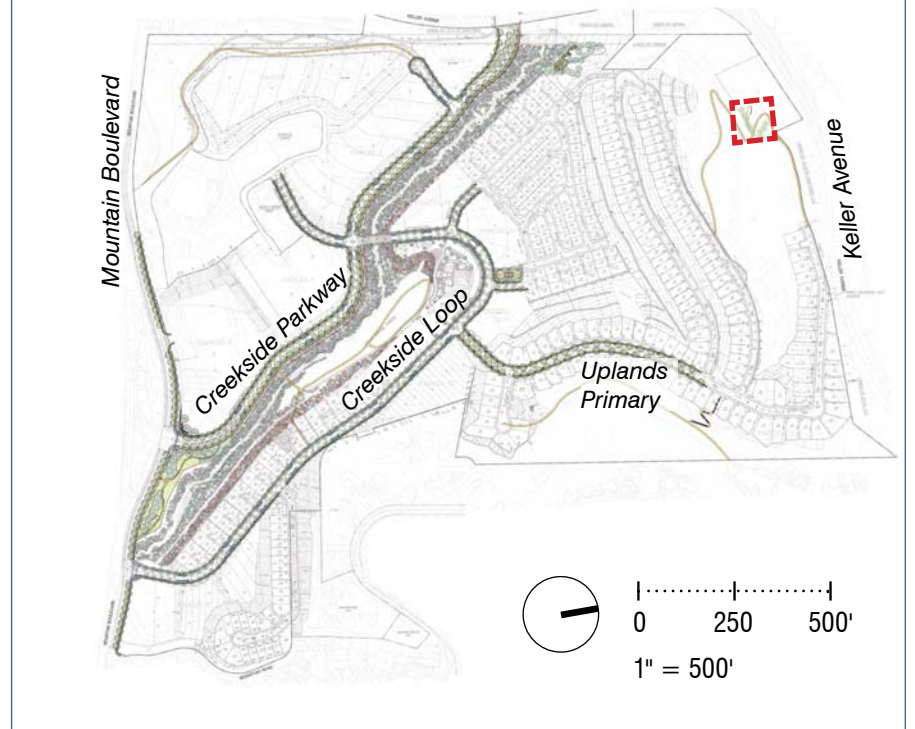
Helicotricon sempervirens
Blue Oat Grass



Perennials – *Nepeta faassenii* / Catmint,
Lavandula angustifolia 'Munstead' /
Dwarf English Lavender



Key Plan



PARK LEGEND

#	Use/Activity
1	Existing Hillside Meadow
2	Benches (quiet seating with panoramic view)
3	Soil Cement Trail, 5' Wide
4	Soil Cement Trail, 8' Wide



Victor Stanley 'Model 8' Bench, walnut



*Landscape Forms
'Multiplicity' Bike Rack*



*'Universe' Small 16" with
Skirted Bell Hood-11 ft ht.*



*Forms + Surfaces 'Urban
Renaissance'*



Victor Stanley 'Model ST-6 Table, walnut



Similar Play Equipment



Similar Play Equipment

**Art program may result in different site furnishings.*



Acer buergerianum
Trident Maple



Acer rubrum 'Redpointe'
Red Maple



Magnolia soulangeana
'Alexandrina' / Saucer Magnolia



Platanus acerifolia 'Yarwood' or
'Columbia' / London Plane



Quercus agrifolia
Coast Live Oak



Sequoia sempervirens
Coast Redwood (parks only)



Tristania laurina
Brisbane Box



Tristania laurina 'Elegant'
Elegant Brisbane Box