



Oaklanders Compost Right!

Placing acceptable items in the compost carts is as important as ever. Oakland needs ALL its residents to do their part to fight climate change and create compost to nourish farms and gardens!

COMPOST YOUR TREE!

Set clean trees at the curb for collection on your regular compost collection day:

Dec. 28, 2020 – Jan. 15, 2021

- No stands
- No decorations
- No "snow" flocking
(Flocked trees cannot be composted; they go to the landfill.)



After January 15, cut trees to fit in your compost cart for regular weekly collection.

WHY Do We Compost Right?

California throws away more than 6 million tons of food scraps every year!

In landfills, decomposing organic material generates methane, one of the most potent greenhouse gases. That's why the State of California and the City of Oakland established rules requiring the composting of food scraps, food-soiled paper and yard debris.



HOW Do We Compost Right?

What if everything you put in your compost cart came back to you in your food?

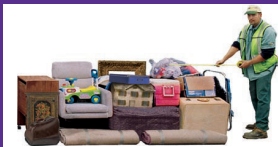
Before you place anything into your green compost cart, ask yourself if what you are putting in there will make good compost. Plastic bags of any kind, glass or metal will not break down and is not good for compost. Only place food-scraps, food-soiled paper (such as coffee filters, paper plates, napkins, and paper towels) and plant debris into your compost cart. These items will break down and make good compost which can be used to grow new food.



Empty food scraps into your green compost cart.

Bulky Pickup for Every Oaklander!

All Oakland residents have access to Bulky Pickup service at no additional cost.



Residents of single family homes may call Waste Management directly to request a pickup. Property managers of 2+ unit homes must call or sign a [waiver](#) allowing residents to schedule their own pickup.

Visit OaklandRecycles.com/bulky-pickup-services for full service information or call Waste Management to schedule your appointment today at (510) 613-8710.

WHAT Happens After We Compost Right?

The items you place in your green cart at home are brought to a compost facility at the Altamont Landfill in Livermore. The process of composting changes your unwanted food scraps, food soiled paper and plant debris into compost in just 60 days! These same items in the landfill contribute to climate change when they decompose.

The compost made from your food scraps is sold to farms and donated to local community gardens. When farmers and gardeners use compost to grow new crops, plants are healthier. Scientist agree that using compost also helps fight climate change.



WHY Do We Recycle Right?

Recycling materials correctly is good for the environment, follows local and state law and avoids contamination surcharges.

Recycle Right in Oakland:

- ☑ To give items a new purpose or new life
- ☑ To stop sending material to the landfill
- ☑ To save natural resources
- ☑ For a sustainable environment

HOW Do We Recycle Right?

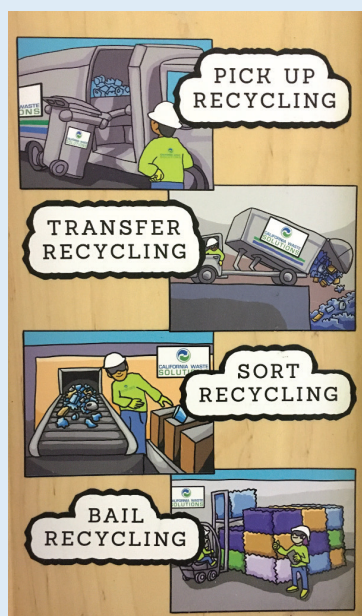
Recycle Right means placing only materials that belong in the recycle cart or bin. When food or trash are placed into the recycle cart or bin, it can prevent recyclable items from being made into new things by making recycling dirty or causing problems at the facility where your recycling is sorted.

- ☑ Commit to recycling is the first step.
- ☑ Place only the items shown on the Recycle cart/bin label inside the container.
- ☑ Do not put food, liquids or trash in the Recycle cart/bin.
- ☑ Put wet cardboard and papers in your compost cart.
- ☑ Make sure all your recyclables are empty, wiped clean and drip dry.

WHAT Happens After We Recycle Right?

Items that are Recycled Right (empty, clean and dry) that you place into your recycling container are separated into different clean recyclable material types such as cardboard, aluminum, paper, glass, and plastic. The separated material is made into bale cubes or put in truck trailers and sold to recycling mills both locally and around the world. California laws and regulations require an increasing percentage of recyclable materials used for making new products. When you Recycle Right your discarded recyclables can return to store shelves as new products in as little as 60 days!

The Oakland Recycles team appreciates our community's commitment to recycling.



What Should I Do With My Used Masks, Gloves and Wipes?



All disposable masks and protective gear are considered trash and are not recyclable. Please place all PPE in a plastic bag and place in your trash container.

What Do I Do With...?

Visit the RE:Source guide at [StopWaste.org](https://www.stopwaste.org) for questions about reuse, repair, recycling and safe disposal options for everything from electronics and clothes to furniture and bicycles.



Mandatory Recycling and Compost Collection

California laws (AB 341 and AB 1826) and Alameda County Mandatory Recycling Ordinance (2012-01) require certain businesses and all multifamily properties to have recycling and organics (compost) collection services. Businesses that generate 2 cubic yards or more of SOLID WASTE per week (trash and recycling combined) must have organics collection services. Organics include food, yard trimmings, nonhazardous wood, and food-soiled paper.

Effective January 1, 2022, California law SB 1383 requires ALL residents and businesses to sort organics and recycling properly.

We'll Help MFD Property Managers Set-up & Train - FREE! Schedule an appointment with WM at 510-359-6982 (compost & trash), or CWS at 510-625-5263 (recycling).