



Photos of a model home

# 1424 12th Street, Oakland

## Brand New Single Family Home at Oaktown Roots

Wowza!!! What a beautiful newly built 4 bedroom, 2.5 bath home! You won't want to miss the opportunity to live in an amazingly easy breezy floor plan featuring an open concept living area, first floor bedroom, chef's kitchen with stainless steel appliances, wide plank life-proof flooring, stylish hardware, gorgeous light fixtures and ample recessed lighting that provide bright yet private living. Fully fenced yard with an off-street parking pad and easy access to public transportation. Income requirements apply\*. There must be a minimum of 4 people.

offered at \$639,000

*\*Below Market Rate (BMR) homes have income and occupancy restrictions, please inquire with sales team for more information.*

PROUDLY BUILT BY



CSLB #1019403

[www.silvermarkluxuryhomes.com](http://www.silvermarkluxuryhomes.com)

SALES TEAM

Allegra Gigante-Luft

(707) 631-5751

[allegra@3treehomes.com](mailto:allegra@3treehomes.com)

DRE #01937741

Octavio Maravilla

(707) 688-0707

[octavio@3treehomes.com](mailto:octavio@3treehomes.com)

DRE #01478677



 DRE #02012348

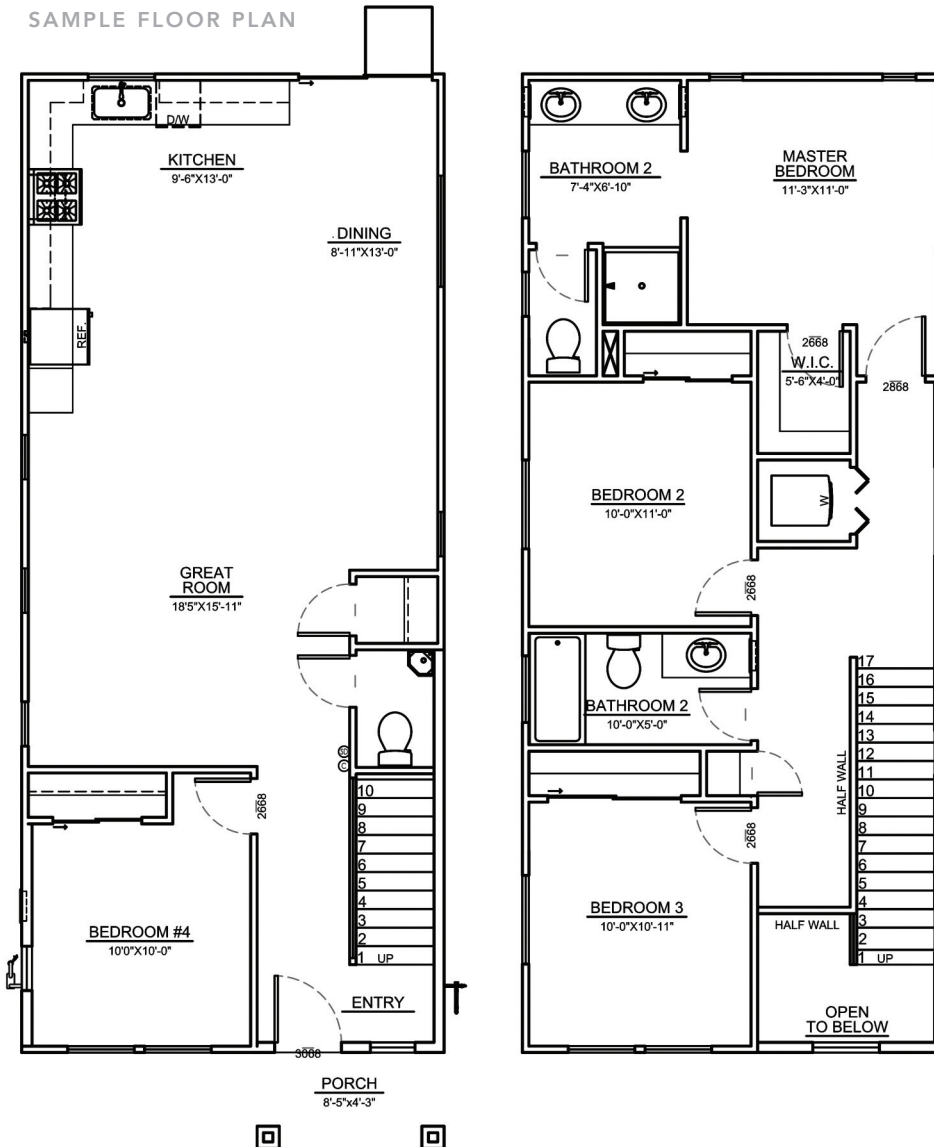


Photos of a model home

#### UPGRADES LIST

- Superior lot location
- Kitchen island
- Pendant lighting over island
- Granite counter tops
- Full granite backsplash
- Recessed light throughout
- Enlarged half bath to include more storage space
- Storage closet under the stairs
- Wall mounted TV outlet
- 2% Seller credit to Buyer
- Energy efficient upgraded insulation
- Shower and bath designer tiled walls
- Designer 2-panel doors
- 6' redwood fence in the backyard
- Gates on each side of the house at rear

#### SAMPLE FLOOR PLAN



#### MAIN FEATURES

- Fully detached newly constructed home
- 4 bedrooms, 2.5 bathrooms on 2 levels
- Approx. 1942 sq.ft. (per builder)
- Open floor plan perfect for entertaining
- Beautiful kitchen with new stove, stainless steel microwave and dishwasher
- All electric house
- Whole house fire sprinkler system
- Luxury vinyl "life-proof" flooring
- Energy efficient heating, lighting, water fixtures and windows

Floor plans are offered as depictions only and should not be relied upon. Square footage is approximate. Principal of the LLC that owns this property is also a CA real estate broker. Please contact sales office for required documents prior to writing an offer.