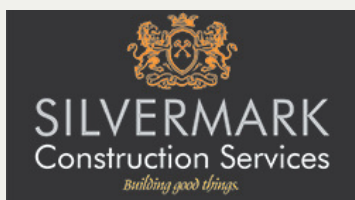


4 BEDROOMS | 2.5 BATHS | 1,475 SF



1424 12TH STREET
OAKLAND, CA 94607

\$639,000



CSLB #1019403



DRE #02012348

SALES TEAM

ALLEGRA GIGANTE-LUFT
707-631-5751

ALLEGRA@3TREEHOMES.COM
DRE# 01937741

OCTAVIO MARAVILLA
707-688-0707

OCTAVIO@3TREEHOMES.COM
DRE #01478677

PROUDLY BUILT BY SILVERMARK LUXURY HOMES, EXCLUSIVELY MARKETING BY 3TREE REALTY.

4 BEDROOMS | 2.5 BATHS | 1,475 SF



1424 12TH STREET
OAKLAND, CA 94607

\$639,000



CSLB #1019403



DRE #02012348

SALES TEAM

ALLEGRA GIGANTE-LUFT
707-631-5751

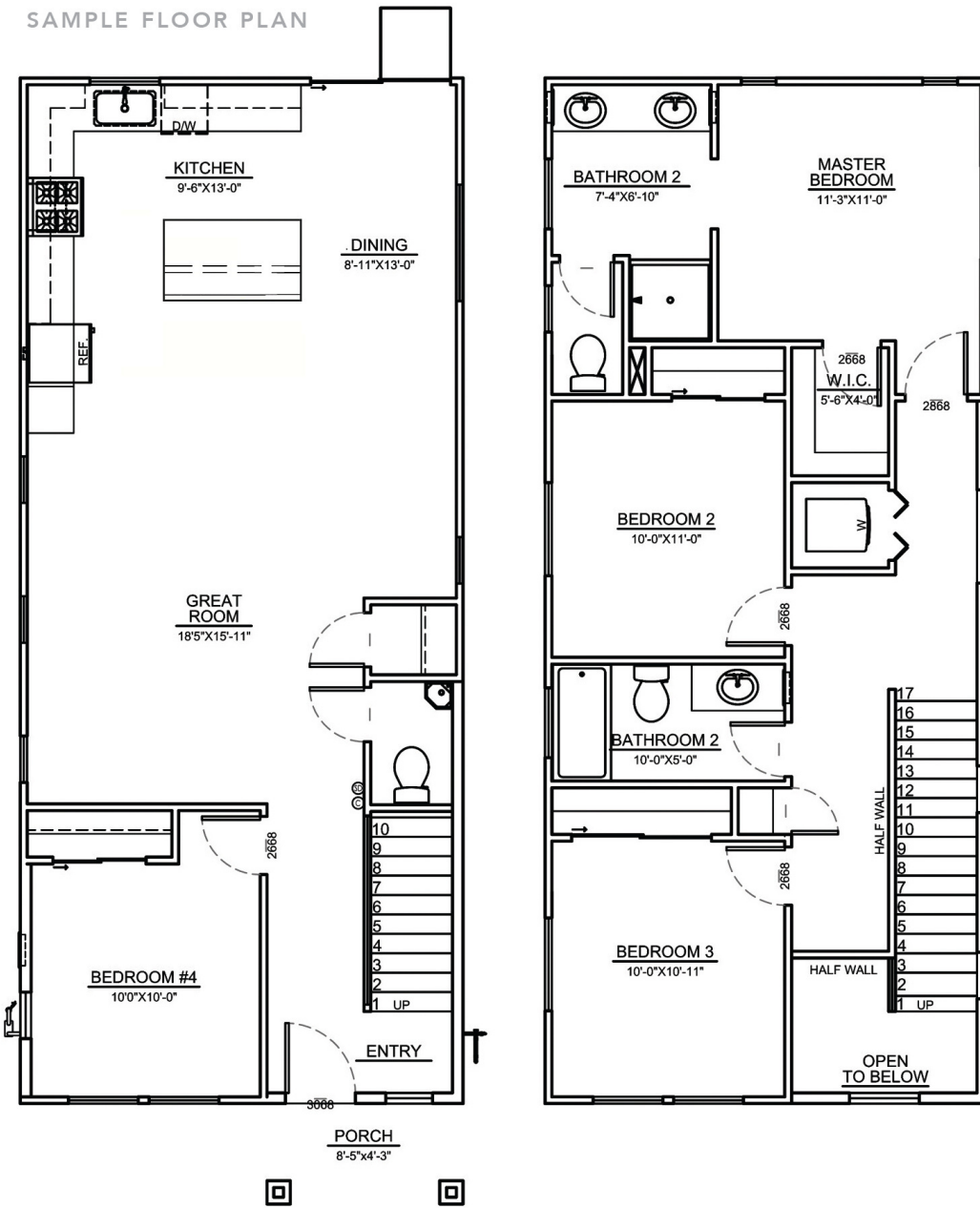
ALLEGRA@3TREEHOMES.COM
DRE# 01937741

OCTAVIO MARAVILLA
707-688-0707

OCTAVIO@3TREEHOMES.COM
DRE #01478677

PROUDLY BUILT BY SILVERMARK LUXURY HOMES, EXCLUSIVELY MARKETED BY 3TREE REALTY.

SAMPLE FLOOR PLAN



MAIN FEATURES

- Superior lot location
- Kitchen island (w/power and breakfast bar)
- Pendant lighting over kitchen island
- Granite Countertops
- Full granite backsplash (in the kitchen)
- Vinyl flooring throughout the entire house
- All electric house
- Energy efficient upgraded insulation in walls and ceiling
- Shower and bath designer tiled walls (surrounds)
- 6ft redwood fence in the backyard
- Upgraded designer 2 panel doors
- Gates on each side of the house at rear
- Upgraded recessed light fixtures throughout the house
- Enlarged half bath to include more counter space and vanity storage
- Storage closet under the stairs
- Wall mounted TV outlet in the Great Room

1424 12TH STREET OAKLAND, CA 94607

OAK TOWN ROOTS NEW CONSTRUCTION SINGLE FAMILY HOME

You won't want to miss the opportunity to live in a beautiful newly built 4 bedroom, 2.5 bath home at an affordable price. This floor plan features an open concept living area, first floor bedroom, chef's kitchen with island, ample storage, stainless steel appliances and elegant soft close cabinetry, wide plank life-proof flooring, stylish hardware, gorgeous light fixtures and ample recessed lighting to provide bright yet private living. Fully fenced yard and easy access to public transportation.

*Income requirements apply. Property must be owner occupied with a minimum of 4 inhabitants.

*Photos are of another completed BMR home, built by Silvermark Construction Services. Square footage is approximate. Principal of the LLC that owns this property is also a CA real estate broker. This home is a Below Market Rate (BMR) home which has income and occupancy restrictions. Please contact sales office for required documents prior to writing an offer.