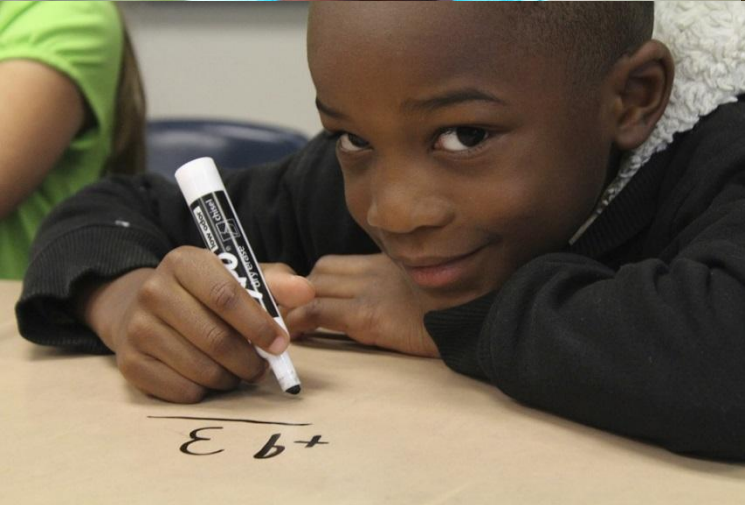




Early Care & Education Landscape in Oakland



The Local Early Care & Education Ecosystem

Education Providers:

- Oakland Unified School District
 - CDC (subsidized)
 - Transitional Kindergarten
- Head Start
- Private Preschools
 - Nonprofit
 - Profit
- Subsidized Preschools
 - YMCA
- Family Child Care (FCC)

Community Based Orgs.

- BANANAS
- Parent Voices Oakland
- Family Resource Navigators
- Oakland Literacy Coalition
- Lotus Bloom
- Bay Area PLAN
- Oakland Starting Smart & Strong

Philanthropy

- David & Lucile Packard Foundation
- Kenneth Rainin Foundation
- Hellman Foundation

Public Partners

- Alameda County
 - Local Planning Council
 - Social Services Agency (child care vouchers)
- First 5 Alameda
- City of Oakland
- Head Start

Types of Early Care & Education Settings

Head Start/Early Head Start

- Comprehensive - whole family model (facility, curriculum, parent engagement, family resource support).
- Federally funded by U.S. Department of Health and Human Services.
- Eligibility based on federal poverty guidelines.

Child Development Centers (CDC)

- Braided funding the federal and state governments
- CDCs usually affiliated with a school district
- Parents must meet income guidelines.

State Preschools

- Funded by the State
- CDCs usually affiliated with a school district
- Parents must meet income guidelines.

Types of Early Care & Education Settings

Family Friend & Neighbor (FFN)

- Auntie, Uncle, Grandparent, Friend, Neighbor
- Can use child care vouchers to pay for care

Family Child Care (Small 8 /Large 14)

- Private market based payment
- Can use child care vouchers to pay for care

Title 22 Center Based Care

- Private market based payment
- Can use child care voucher to pay for care

Transitional Kindergarten

- Enrollment of 4 years
- School-based
- No tuition

True Cost of Child Care (Full Day, Year-Round)

Private Pay:

- Infant & Toddler (0-2): \$27,000 Annually
- Preschooler (2-5 years): \$26,000 Annually

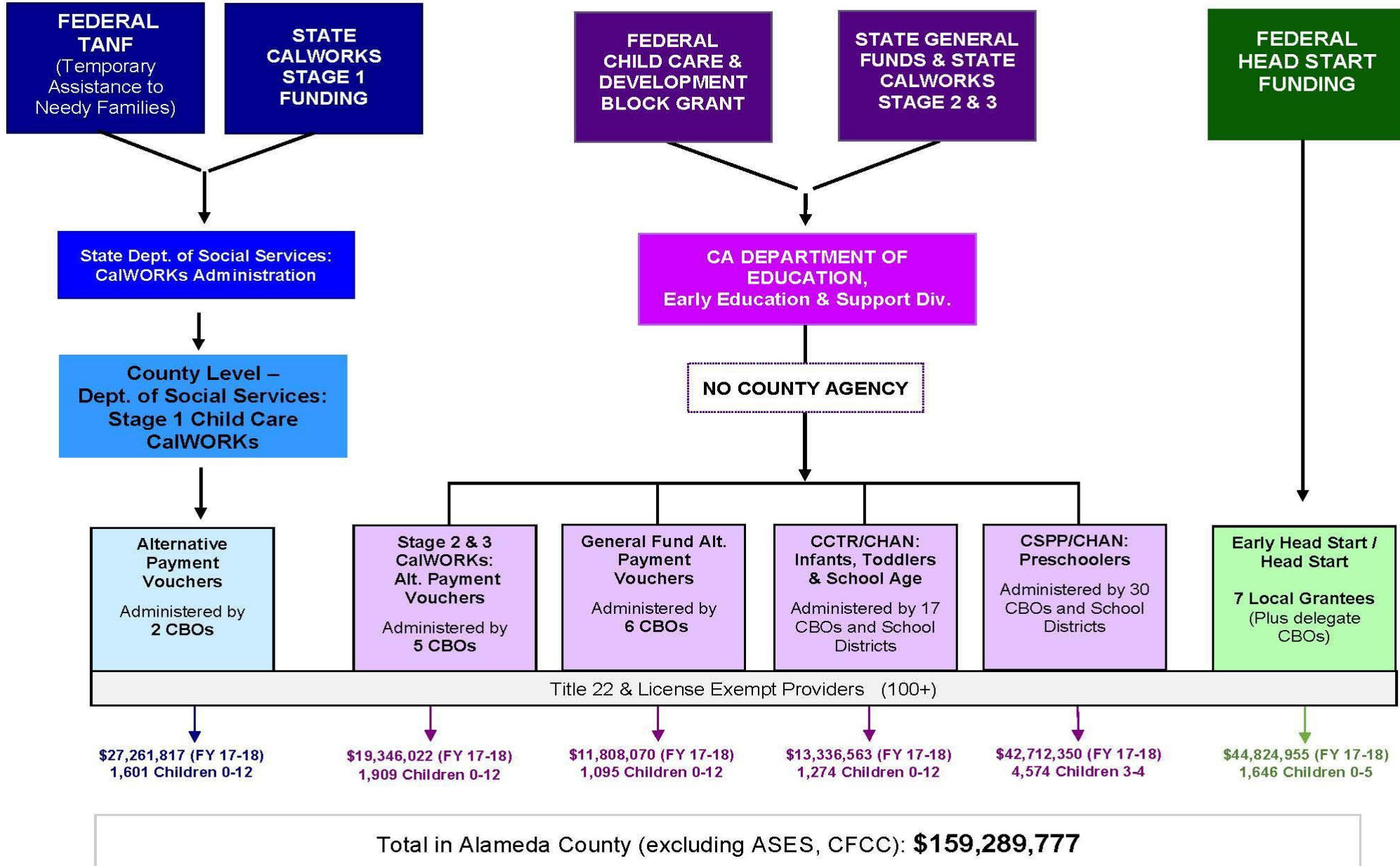
Subsidized - Family Child Care Home

- Infant & Toddler (0-2 years): \$17,940 Annually
- Preschooler (2-5 years): \$17,108 Annually



Early Care & Education Public Funding Landscape

Updated August 2018

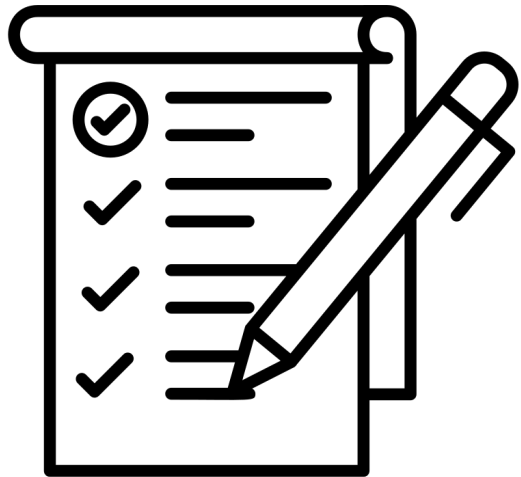


Types of Subsidized Child Care



- Child Development Centers
 - YMCA
 - Head Start
 - Kidango
 - State Preschool
 - Vouchers (State and County funded)
-

Eligibility Criteria Alameda County



ALAMEDA COUNTY 2021-2022 INCOME CEILINGS:

Family Size & Gross Monthly Income

1-2	\$5,889	3	\$6,511	4	\$7,441
5	\$8,632	6	\$9,823	8	\$10,269
9 / 10					\$10,492/\$10,716

Following is a partial list of income types that count toward total household income:

- Wages/salaries
- Child/spousal support
- Disability insurance
- Pensions or annuities
- Cash aid (TANF/ CalWORKs)
- Self-employment income
- Worker's compensation
- Unemployment • Veteran's benefits

Eligibility Criteria For Head Start Programs



PERSONS IN FAMILY, INCOME

1 person \$12,880	2 people \$17,420
3 people \$21,960	4 people \$26,500
5 people \$31,040	6 people \$35,580
7 people \$40,120	8 people \$44,660