



# OAK KNOLL

## Design Guidelines

May 2016

## CLIENT

Oak Knoll Venture Acquisitions LLC  
c/o Suncal  
2392 Morse Avenue  
Irvine, CA 92614

## CONSULTANT TEAM

**Hart Howerton**  
1 Union Street, 3rd Floor  
San Francisco, CA 94111

Contact: Chris Hall

Civil Engineer  
**BKF Engineers**  
300 Frank Ogawa Plaza  
Oakland, CA 94612

Contact: Jacob Nguyen

# CONTENTS

## 1.0 INTRODUCTION

1.1	Community Vision .....	7
1.2	How to use these Guidelines.....	9

## 2.0 PLANNING GUIDELINES

2.1	Oak Knoll Neighborhoods.....	13
2.2	Neighborhood Streetscapes .....	14
2.3	Commercial Development Standards.....	18
2.4	Townhome Development Standards.....	22
2.5	Setback and Height Standards .....	24
2.6	Driveways and Garage Placement.....	25

## 3.0 ARCHITECTURAL GUIDELINES

3.1	The Bay Area Regional Style .....	27
3.2	The Architectural Style Matrix .....	30
3.3	Massing - Primary Volumes.....	32
3.4	Roofs.....	33
3.5	High Visibility Facades.....	39
3.6	Openings - Windows .....	40
3.7	Exterior Doors.....	42
3.8	Porches and Stoops .....	42
3.9	Garages .....	47
3.10	Lighting.....	48

## 4.0 LANDSCAPE GUIDELINES

4.1	Landscape Vision.....	51
4.2	Streetscape Design.....	52
4.3	Open Space Design .....	58
4.4	Parks and Plaza Design.....	60

4.5	Community Trails and Recreation.....	62
4.6	Signage and Monumentation .....	64
4.7	Walls .....	66
4.8	Residential Landscape Design .....	67
4.9	Single Family Residential .....	68
4.11	Side and Rear Yard Fencing.....	71
4.12	Retaining Walls on Lots .....	72

## APPENDICES

Appendix A - Approved Materials and Color Palette.....	i
Appendix B - Approved Wall, Fences & Guardrails.....	vi
Appendix C - Approved Plant List.....	ix



# 1.0 INTRODUCTION





View looking east from new bridge over Rifle Range Creek

## 1.1 COMMUNITY VISION

The Community at Oak Knoll is planned as a walkable system of neighborhoods anchored by a community scale retail village, neighborhood parks, and natural and accessible open space. The neighborhoods are woven together through an extensive system of trails and carefully designed streets. The primary landscape features around which the land plan is shaped is the restored branch of the Rifle Range Creek and the surrounding upland areas to the north, south and east of the creek.

The local climate at Oak Knoll is characterized by temperate weather and is considered one of California's finest for habitation as well as horticulture. Because of this, the masterplan and residences are organized around the outdoors and integration with the landscape. In addition to the architectural features of the homes that provide links to the outdoors (porches, stoops, verandas, courtyards, decks, etc), the abundance of trees and plants produces a vibrant natural setting.

Integrated into this larger landscape and streetscape vision, the residential neighborhoods will have a diverse mix of residential sizes and types and are planned to be executed in a range of architectural styles appropriate to the setting.



Retail Village



Community Open Space and Trails



OAK KNOLL DESIGN GUIDELINES | MAY 2016

Figure 1.1- Illustrative Master Plan



## 1.2 HOW TO USE THESE GUIDELINES

These Design Guidelines provide design principles to future builder/ applicants. Final Development Plans shall be substantially consistent with the Preliminary Development Plan. The Design Guidelines refine and clarify the direction in the Planned Unit Development and Preliminary Development Plan.

Where the Design Guidelines are silent or vague, the Preliminary Development Plan shall be used for the purposes of interpretation, and/or directly applied as appropriate.

This book is divided into three chapters: Planning, Architecture and Landscape, each of which addresses topics critical to achieving the community vision. The appendices to this book include materials, color, and plant palettes. Final Development Plans will be reviewed for their consistency with the principles and regulations set forth in these three chapters. Below is an outline of the content of each chapter:

### PLANNING

The Planning chapter addresses the selection of an appropriate plan type, the placement of the building on the lot, driveway and garage design, and building façade regulations as they relate to general neighborhood planning principles.

### ARCHITECTURE

The Architecture chapter introduces the principles of Oak Knoll architecture and how they are applied in the detailed design of a home or building. This includes the secondary massing, the roof forms, and the components, details, and finishes of all vertical improvements.

### LANDSCAPE

The Landscape chapter addresses landscape elements within community streetscapes, community open spaces and residential lots. This includes fences and site walls, , planting requirements, plant lists and signage regulations.



Oak Knoll Community



Typical Residential Neighborhood



Mountain Boulevard Entry - Retail Village

## 2.0 PLANNING GUIDELINES

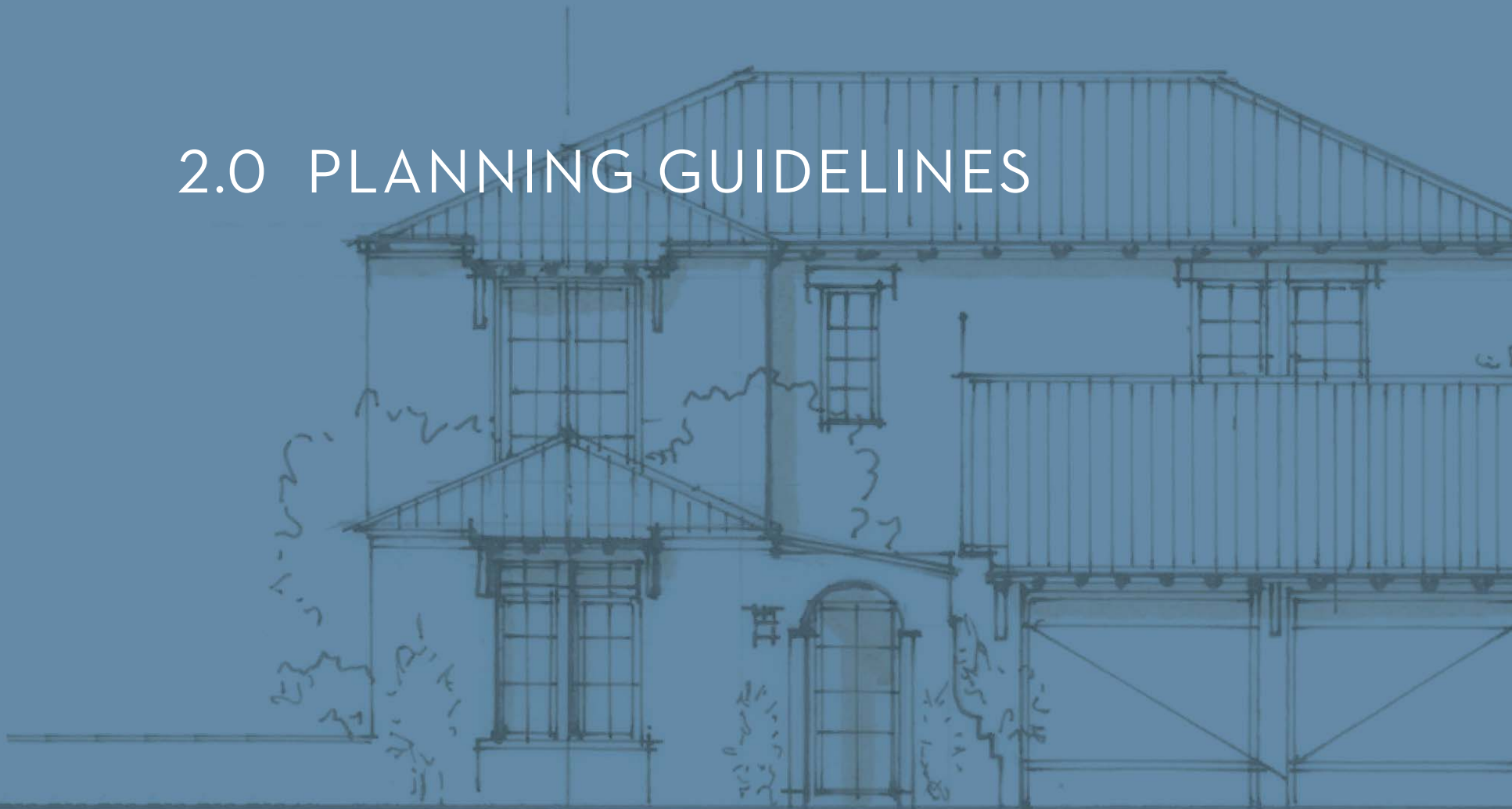




Figure 1.2- Neighborhoods Plan

## 2.1 OAK KNOLL NEIGHBORHOODS

The site at Oak Knoll features three upland areas surrounding a lowland valley with a creek running through it. The neighborhoods that make up this community are defined as the Retail Village, Creekside Village, and the Uplands. See Figure 1.2 Neighborhoods Plan on the facing page.

### RETAIL VILLAGE

The Retail Village area is designed as a modestly-sized gathering spot to provide basic needs to the community (such as groceries, restaurants, banking). It is envisioned as a cluster of buildings at varying scales fronting a 'Main Street' and a 'Plaza'. It will feature landscape and street furnishings that give it a distinct identity similar to other neighborhood centers in the Oakland hills. Please refer to the landscape chapter for further information on these features.

### CREEKSIDE VILLAGE

The Creekside Village neighborhoods are medium to high density residential areas laid out in the lowland areas flanking the restored Rifle Range Creek corridor. These neighborhoods are compact and walkable and feature a framework of parks and open space which connect to the creek. The Creekside Village will offer a range of residential product types from townhomes to single family detached residences.

### THE UPLANDS

Residential development in the Uplands is designed to maximize views as well as provide a pleasing appearance as viewed from adjacent areas. The Uplands neighborhoods offer a range of residential product types from townhomes to single family detached residences. The Uplands connect to the surrounding community via a system of trails and preserved open space. Please also refer to the City of Oakland's Residential Hillside Development Regulations for further restrictions on lots with slope within the development envelope.



Retail Village - Main Street and Plaza



Club Knoll- Community Center

## 2.2 NEIGHBORHOOD STREETSCAPES

The Oak Knoll neighborhood streets are designed to be pedestrian friendly in both function and appearance. A line of street trees flanks either side of the street, with a generous sidewalk. Planting and fences in the front yard zone between the sidewalk and the homes is designed to define an appropriate transition to the semi-private yard and porch zone. Porches will be designed as outdoor rooms and lighted to provide a sense of security to the pedestrian. Please refer to the Landscape Chapter of these Design Guidelines for specific proposed street sections.



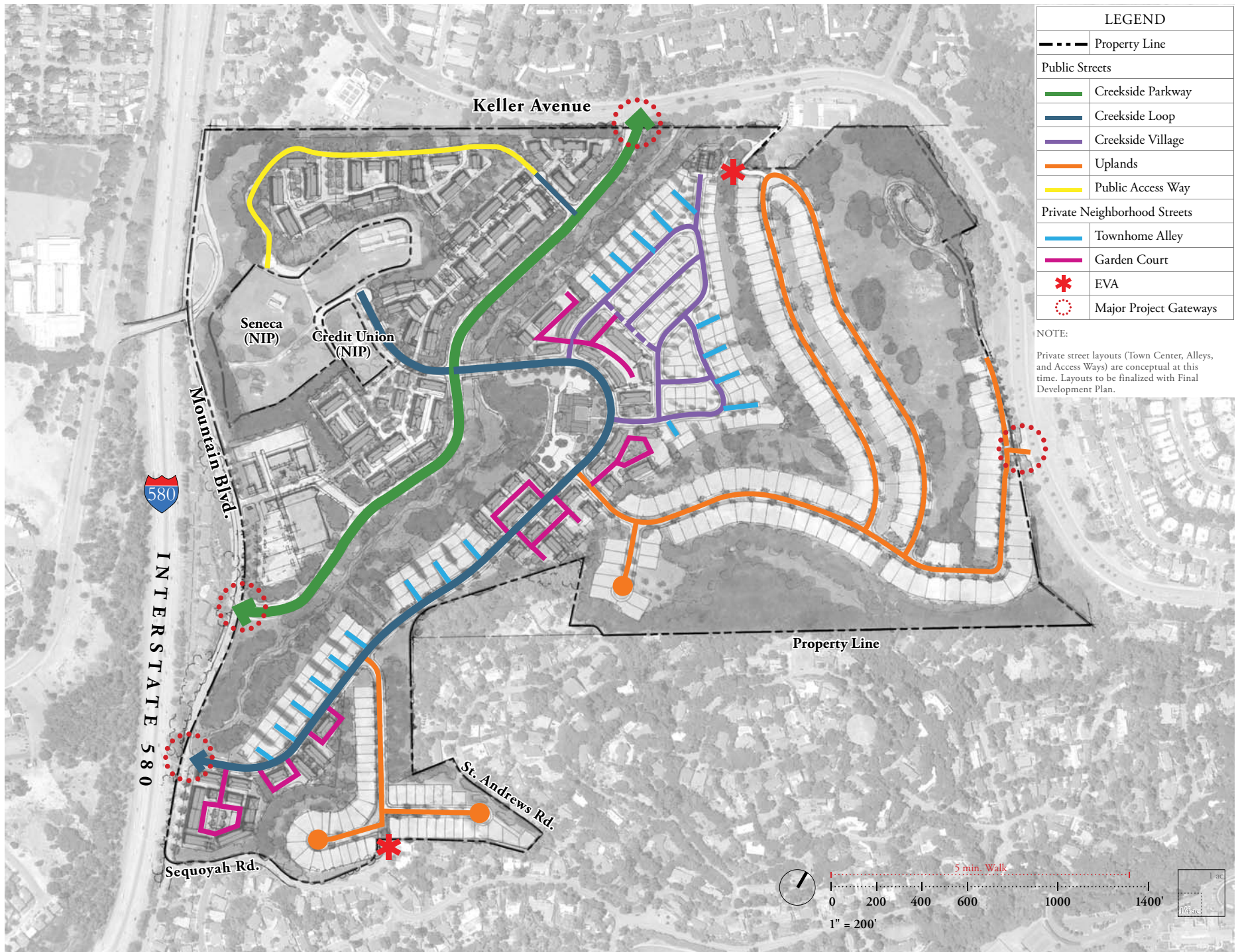
Typical Neighborhood Streetscape



Integrated Stormwater Treatment - "Rain Gardens"



Street Trees



LEGEND	
---	Property Line
Public Streets	
—	Creekside Parkway
—	Creekside Loop
—	Creekside Village
—	Uplands
—	Public Access Way
Private Neighborhood Streets	
—	Townhome Alley
—	Garden Court
*	EVA
⊙	Major Project Gateways

NOTE:  
Private street layouts (Town Center, Alleys, and Access Ways) are conceptual at this time. Layouts to be finalized with Final Development Plan.

Figure 1.3- Circulation Plan

## HIGH VISIBILITY FACADES - STREET FACING

All facades which are visible from the street, including setback garages and all sections of side facing façades which are in front of garages must follow High Visibility standards as defined in the Architectural Guidelines of this book.

## HIGH VISIBILITY FACADES -OPEN SPACE FACING

The intention for an open space facing home is to present a pleasing appearance towards the open space and to take advantage of views towards the surrounding creek or woodland areas. These facades must follow High Visibility standards as well.

## ARCHITECTURAL DIVERSITY AND ‘THE MONOTONY CODE’

The purpose of the Monotony Code is to create variation and hierarchy within the Oak Knoll streetscape, giving the community an appearance of growth over time. This can be done by designing a range of home layouts and sizes that respond to the location of the lot within the overall neighborhood. The Monotony Code will be enforced through the use of a matrix tracking the following:

- For each single-family detached lot type, there must be a minimum of three unique floor plan types, with three façade variations each;
- A different porch or stoop type will be considered a façade variation;
- No two detached homes of the same design may be repeated within 2 adjacent lots on a given Block Face or a facing Block Face;
- Homes on corner lots are encouraged to have architectural features such as wrapped porches, side porches, or bay windows facing the secondary street. Both the front as well as side facing facade on corner lots will be considered High Visibility Facades.



The Monotony Code aims to produce neighborhoods that have diverse streetscapes and architectural features like the images on the facing page.

The Monotony Code aims to prevent uniform streetscapes and architecture like the image to the left.





Typical Streetscapes - Creekside Village



Typical Streetscapes - Uplands



Typical Streetscapes - Uplands

## 2.3 COMMERCIAL

The Retail Village at Oak Knoll is meant to provide public gathering spots and convenience shopping for local residents. It is envisioned as urban in character similar to other local neighborhood commercial corridors (such as sections of Park or Lakeshore Boulevards) and should feature retail facades on the street rather than an isolated 'strip' type development laid out alongside a parking lot. In addition to following the cities zoning ordinances,, the following guidelines will apply to the Retail Village, see figure 1.6:

Design Objectives:

- Building placement which reinforces the concept of the 'Main St' and the 'Plaza', and orients service areas away from these and is screened from view from Mountain Blvd
- Appropriate Glazing requirements for all facades facing primary streets and public areas
- Awnings to provide outdoor gathering areas and shade
- Sidewalk widths at primary retail facades sufficient to provide tree planting, signage, furnishings, lighting and outdoor seating areas where appropriate to adjacent retail use
- Hardscape and Planting which reinforces the outdoor pedestrian realm, but provides equal access to vehicular traffic

A final design for the retail village will be submitted by a retail developer. Retail signage locations and design shall be reviewed at the Final Development Plan submittal stage, and a Signage Master Plan will be submitted as part of that application.



Retail Village - Bldgs oreint towards Main St



'Main St' retail facade treatment example

## MAIN STREET AND PLAZA

The Retail Village is designed around the primary components of a Main St and Plaza. The siteplan (fig 1.6) is meant to be one possible configuration of this concept, with applicable development standards applied to it. Final Plans will need to follow the spirit of these Design Guidelines although ultimate building configurations may vary.

The Main St is intended to create an ideal frontage for Retail facades while creating comfortable circulation for both pedestrians and vehicles. Primary retail facades and adjacent outdoor areas should all orient towards this main st.

The Retail Plaza is an intimately scaled pedestrian plaza that provides expanded frontage for retail facades as well as opportunities for soft programming such as outdoor dining, street faires, and weekend markets. The Main St and Plaza should have the option of being closed to vehicles for special events.

## ARCHITECTURAL AND LANDSCAPE CHARACTER

The Character of the Retail village should be inspired by the open-air neighborhood shopping districts typical to the Bay Area. These districts are typified by simple facades with ample glazing, clerestory windows, awnings and shade structures. Recommended materials, colors and plant palettes are similar to the residential guidelines and are contained in Appendix x and the photo references on these pages are meant to convey the general features which convey character.



Figure 1.5- 'Main Street' Conceptual Section

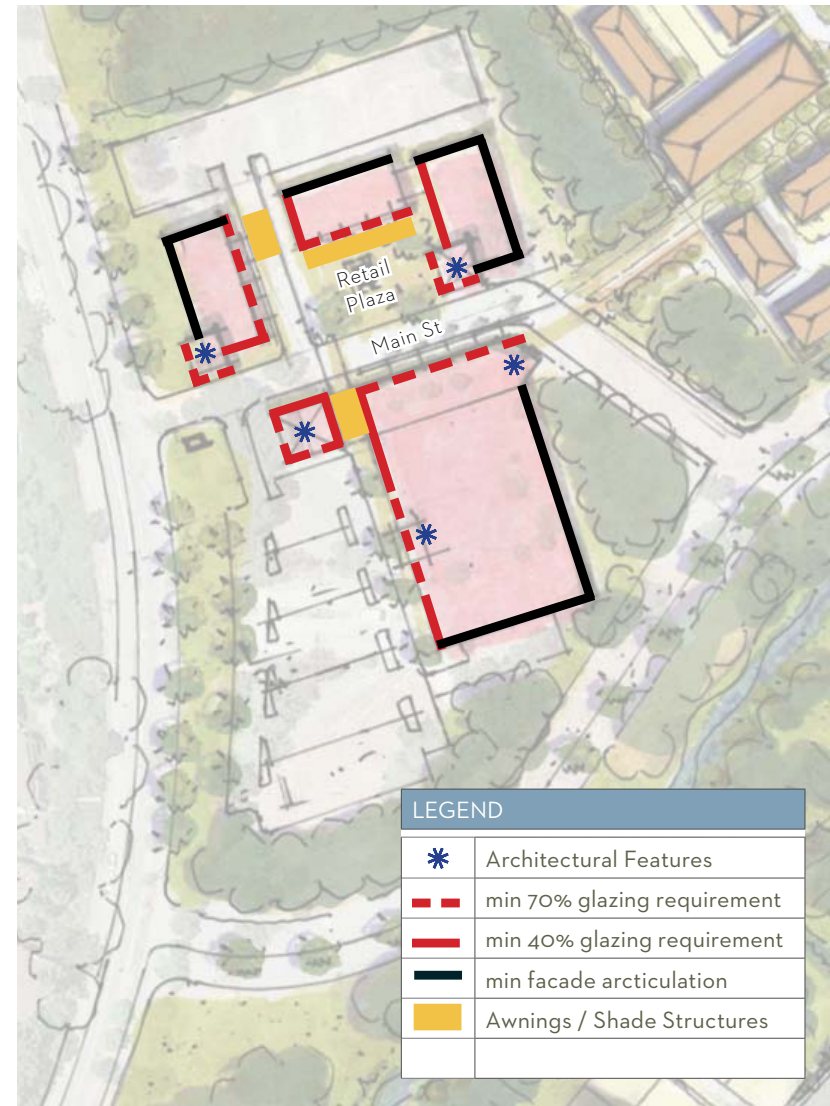


Figure 1.6- Facade Treatments, Architectural Elements, Example of Conceptual Layout, this example plan intended to show compliance with the design objectives of a 'Main St' and 'Plaza', actual site and building configuration may vary.



Trellis structures and integrated planting



Clerestory windows and natural lighting



Outdoor Seating Areas



Example of typical row of retail facades



Awnings and Shading Devices



Simple facades



Lighting and Signage



Trees and plantings informally integrated into public areas



Arcades

## 2.4 TOWNHOMES

Townhome development at Oak Knoll will be designed to create functional and pedestrian friendly streetscapes. The orientation and layout of buildings should create 'addresses' and a sense of place for individual homes. Townhomes should feature adequate open space and common amenities for the inhabitants as defined in the City of Oakland's Zoning Ordinances. Final design of townhome parcels will be submitted to the City of Oakland in a form of a Final Development Plan, and designs will be evaluated using these guidelines.

### Design Objectives:

- Create a 'sense of address' and a front door for each unit by providing 'door yards', gates, and access to public streets and paseos;
- All units should feature covered entry areas either in the form of a stoop or entry porch;
- Variation of design is encouraged, and corner units should be treated differently than middle units;
- End facades should be treated as high visibility and should feature windows, entries where appropriate, and other design features normally on the front facade.
- Odd numbers of units in a row are encouraged;
- Stepping between units is encouraged to provide private balconies and a varied building frontage as viewed from the street.
- Landscape planting should be integrated in with streetscapes and provide screening for parking & alleys. Please refer to the Preliminary Development Plan for example designs for Paseos and Pocket Parks.



'Door yards' and orientation of entry onto a street or pedestrian path



Typical Elevation example



Corner 'end facades'



Covered Entry



Stepped Massing



Balconies and individualized unit designs



Typical Elevation Example

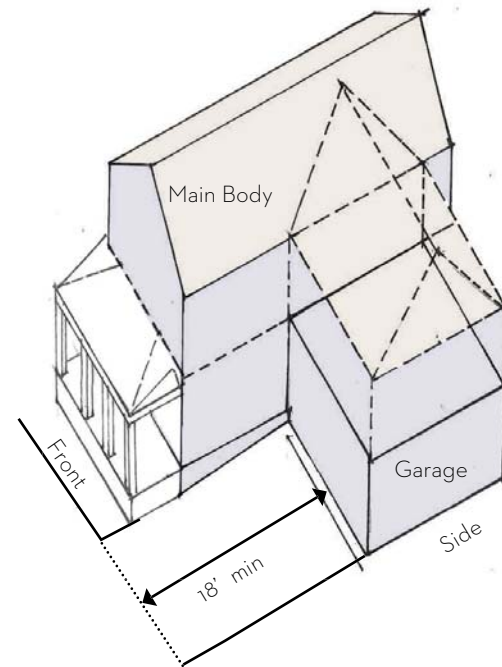


Typical Elevation Example

## 2.5 SETBACK AND HEIGHT REGULATIONS

Building setback and height requirements are contained in the Development Standards with the proposed zoning and vary according to lot size and building type. In addition to those standards, the intent of these guidelines is to address additional massing considerations such as 'under the roof' or 'attic' 1/2 stories, and setback garages. These considerations are described further in the Architectural chapter.

Within the small lot area (lots of less than 4000 sf), up to 100 sf of a covered porch area is allowed to encroach up to 5' into the front yard setback, provided that on-lot storm water treatment is adequately accommodated. In no case shall a porch be closer than 3' from a sidewalk or common access drive.



Two-story garage volume without dormers



## 2.6 DRIVEWAYS AND GARAGE PLACEMENT

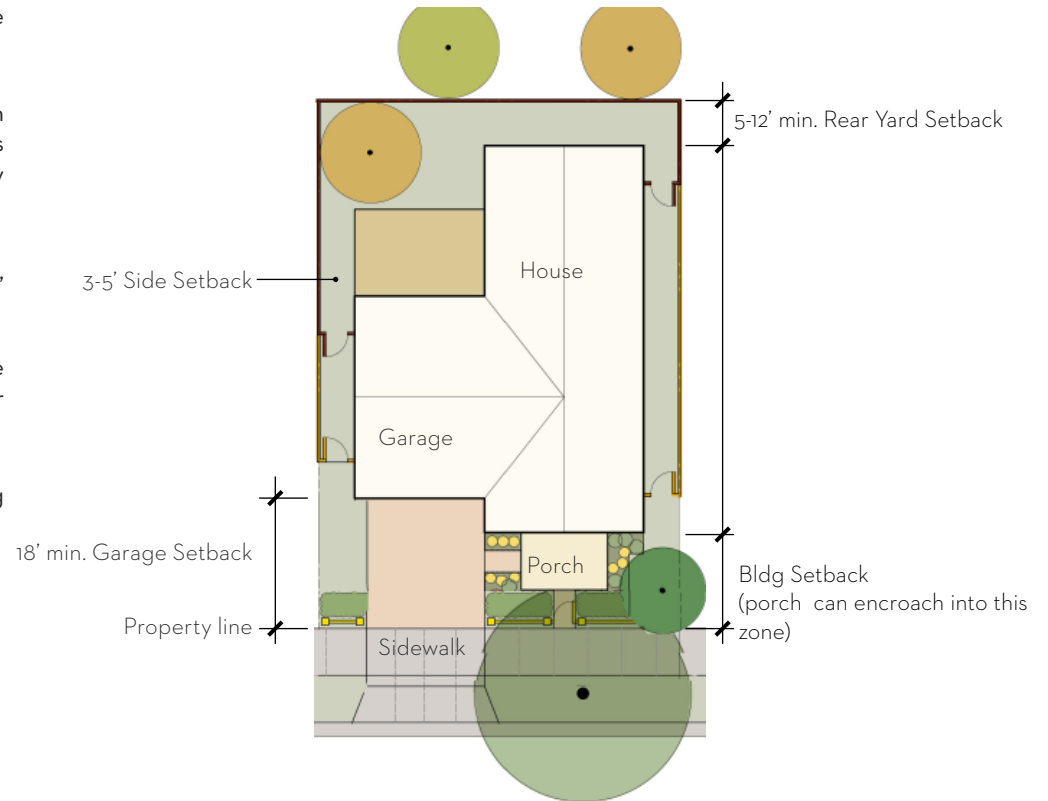
Driveways and garages within Oak Knoll should be designed to reinforce the dominance of a tree-lined streetscape.

Garages on hillside lots should follow Oakland's Hillside Design Guidelines and further illustration of typical designs for garages and driveways on sloped streets are contained in the Preliminary Development Plan documents.

Limiting curb cuts to 16' in width is strongly encouraged, where feasible, for front loaded lots.

Driveway width in front of 2 car garages should be 18' wide at garage entry allowing for two off-street parking spaces in front of garage. Refer to Figure x.x below.

Refer to Chapter 4.0, Landscape Guidelines, for allowable paving materials for driveways



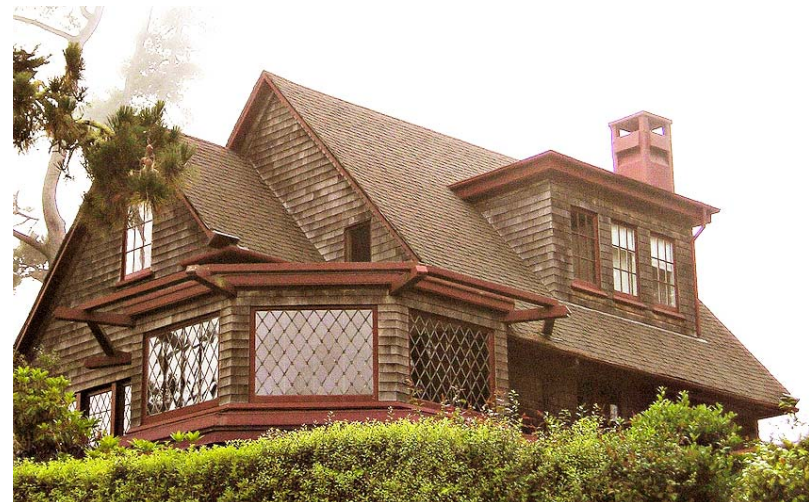
An architectural sketch of a building facade, rendered in a light brown or sepia tone. The drawing shows a multi-story structure with a prominent gable roof on the left side. The gable contains a window. Below the gable, there is a large window with a decorative frame and a small balcony or ledge. To the right of this, there are several more windows of varying sizes and styles, some with decorative elements. The sketch includes some loose, gestural lines representing trees or foliage on the left and bottom. The overall style is that of a preliminary architectural drawing or a conceptual sketch.

# 3.0 ARCHITECTURAL GUIDELINES

## 3.1 THE 'BAY AREA' REGIONAL STYLE

The Bay Area has a unique and home-grown residential character which has evolved in response to the local climate, cultural history, and lifestyle of its inhabitants. Many respected names in the field of architecture, landscape design and development have contributed to this character throughout history. The East Bay's early development phase included names like Bernard Maybeck, Julia Morgan, Walter Ratcliff, Henry Gutterson, Mason/McDuffie, and Frederick Law Olmsted; the mid-century included names like Joseph Eichler, William Wurster, Joe Esherick, Charles Moore, and many others. While the styles that make up this character are diverse, they are bound by common themes that form a sense of place and will inform the identity of Oak Knoll. Among these themes are:

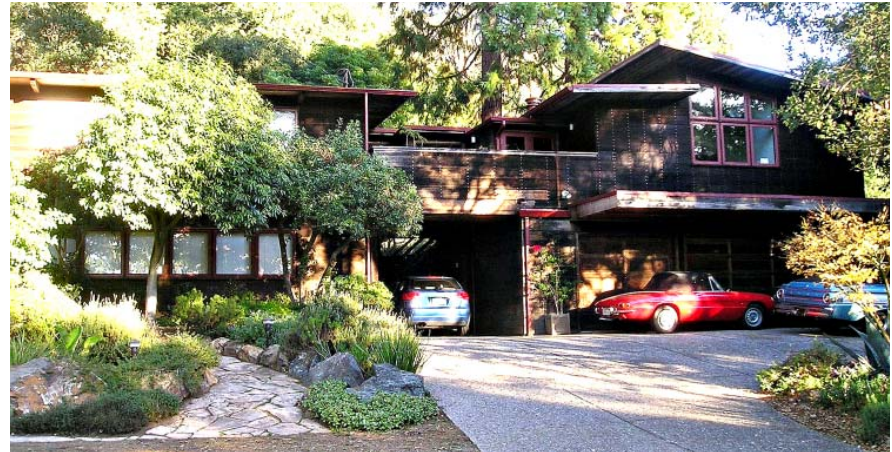
- Buildings which connect to and are inspired by the natural setting
- Simple building mass with additive elements
- Natural Materials (wood, stone, terra cotta, stucco)
- Subdued earth-tone paint colors and light colored stuccos



Bay Area Regional Style - Shingle



Bay Area Regional Style - Contemporary



Bay Area Regional Style - Mid Century Modern

For the purposes of style classification, the following styles are identified as typical to the area and considered appropriate to Oak Knoll:

### ARTS & CRAFTS

- Craftsman Bungalow
- Shingle
- Tudor
- Arts and Crafts

### MEDITERRANEAN

- Spanish Colonial
- Mission
- Tuscan

### CALIFORNIAN

- Farmhouse
- California Modern (mid-century modern)
- California Contemporary



Bay Area Regional Style - Arts and Crafts



Bay Area Regional Style - Spanish Colonial

## THE HISTORIC PRECEDENTS

The style of the architecture at Oak Knoll draws from examples of the historic styles typical in the area. These images show inspirational historic 'ancestors'; new homes will not be replications of these but rather derived from similar design principles. These principles will then be applied to current designs taking into consideration today's materials, construction practices, and modern lifestyle considerations.



Bay Area Regional Style - Craftsman Bungalow



Bay Area Regional Style - Tuscan



Bay Area Regional Style - Arts and Crafts



Bay Area Regional Style - Contemporary

## 3.2 ARCHITECTURAL STYLE MATRIX - BY FAMILY

	Massing / Roof Form	Windows and Doors	Porches / Balconies and Details	Materials and Color*
<b>ARTS AND CRAFTS</b>				
Craftsman Bungalow	<ul style="list-style-type: none"> <li>Lower pitch gable roofs (4/12 - 8/12)</li> <li>Broad eaves with exposed rafters</li> <li>Wide shed dormers</li> <li>1/2 story upper floors</li> </ul>	<ul style="list-style-type: none"> <li>Double hungs, single or grouped</li> <li>Casements, single or grouped</li> <li>Bay windows</li> <li>Wide panelled entry doors</li> </ul>	<ul style="list-style-type: none"> <li>Wide porches, often covered by primary roof form, integrated into primary mass</li> <li>Thick porch columns</li> </ul>	<ul style="list-style-type: none"> <li>Wood or composite siding and trim</li> <li>Cast stone brick used as accent materials</li> <li>Subdued earth tone colors with warm accent colors</li> </ul>
Shingle	<ul style="list-style-type: none"> <li>Medium pitch gable and hip roofs (6/12 - 12/12)</li> <li>Gable and shed dormers</li> <li>1/2 story upper floors</li> </ul>	<ul style="list-style-type: none"> <li>Cottage style double hungs</li> <li>Casements, single or grouped</li> <li>Bay windows</li> <li>Panelled entry doors</li> </ul>	<ul style="list-style-type: none"> <li>"innie" porches, often covered by primary roof form, integrated into primary mass</li> </ul>	<ul style="list-style-type: none"> <li>Wood shingle with wood or composite trim</li> <li>Natural stained base color with darker accent color on trim</li> </ul>
Tudor Arts and Crafts	<ul style="list-style-type: none"> <li>Steeper pitch gable roofs (8/12 - 18/12)</li> <li>Cross-gables and dormers</li> <li>1/2 story upper floors</li> <li>Assymetric massing</li> </ul>	<ul style="list-style-type: none"> <li>Casements, single or grouped</li> <li>Bay windows</li> <li>Arched entry doors, pointed or round</li> </ul>	<ul style="list-style-type: none"> <li>Assymetric entry features (stoops or porches) integrated into primary bldg mass</li> </ul>	<ul style="list-style-type: none"> <li>Wood and stucco walls</li> <li>Brick used as accent material</li> <li>White or rich earth tone base color with darker accent color on trim</li> </ul>
<b>MEDITERRANEAN</b>				
Spanish Colonial Mission revival	<ul style="list-style-type: none"> <li>Lower pitch hip roofs (4/12-8/12)</li> <li>Secondary shed roofs</li> <li>Secondary flat roofs areas with shaped parapets</li> </ul>	<ul style="list-style-type: none"> <li>Casements, single or grouped</li> <li>Tall double hungs</li> <li>Arched entry doors</li> </ul>	<ul style="list-style-type: none"> <li>Covered entry arcades</li> <li>Juliet balconies</li> <li>Painted metal railings and window grilles</li> </ul>	<ul style="list-style-type: none"> <li>Stucco walls</li> <li>Terra cotta roof tiles</li> <li>Colored glazed tile and cast ornamental details as accents</li> <li>Light colored walls</li> </ul>
Tuscan	<ul style="list-style-type: none"> <li>Lower pitch hip roofs (4/12-8/12)</li> <li>Projected eaves with flat soffit and corbels</li> </ul>	<ul style="list-style-type: none"> <li>Tall casement style windows</li> <li>Pedimented front entry</li> </ul>	<ul style="list-style-type: none"> <li>Loggias at entry or upper level</li> <li>Balconies with balustrades or painted metal railings</li> </ul>	<ul style="list-style-type: none"> <li>Stucco walls</li> <li>Cast stone as accents</li> <li>Earth colored walls (sienna and umber)</li> </ul>
<b>CALIFORNIAN</b>				
Farmhouse Traditional	<ul style="list-style-type: none"> <li>Medium pitch gable roofs (6/12 - 12/12) and simple primary mass</li> <li>Gable and shed dormers</li> <li>1/2 story upper floors</li> </ul>	<ul style="list-style-type: none"> <li>Double hungs, single or grouped</li> <li>Casements, single or grouped</li> <li>Panelled entry doors</li> </ul>	<ul style="list-style-type: none"> <li>Front or side porches - shed roof, additive to primary mass</li> <li>Shed awnings</li> </ul>	<ul style="list-style-type: none"> <li>Vertical wood or composite siding, board and batten</li> <li>White and light colors</li> </ul>
Mid Century Modern	<ul style="list-style-type: none"> <li>Lower pitch gable and hip roofs (3/12 - 6/12)</li> <li>Broad horizontal eavelines, with exposed rafters or flat soffits</li> <li>Secondary shed roofs</li> <li>Secondary low-pitch shed roofs</li> </ul>	<ul style="list-style-type: none"> <li>Wide horizontal window rows</li> <li>Sliding, double hung, or casement</li> <li>Corner windows</li> </ul>	<ul style="list-style-type: none"> <li>Wide extended eaves over entry areas</li> </ul>	<ul style="list-style-type: none"> <li>Vertical or horizontal wood or composite siding</li> <li>Subdued natural colors</li> </ul>
Contemporary	<ul style="list-style-type: none"> <li>Stepped building massing</li> <li>Flat roofs</li> <li>Monopitch roof, split gable monopitch</li> </ul>	<ul style="list-style-type: none"> <li>Large expanses of glass, gridded or single frame</li> <li>Sliding or casement</li> <li>Corner windows</li> </ul>	<ul style="list-style-type: none"> <li>Flat roof or shed awning over entry</li> </ul>	<ul style="list-style-type: none"> <li>Vertical or horizontal wood or composite siding</li> <li>Smooth-textured stucco walls</li> <li>Whites and subdued natural colors</li> </ul>

\*See Appendix for detailed spreads of Materials and Colors



Craftsman Bungalow



Shingle



Tudor



Arts and Crafts



Spanish Colonial



Spanish Colonial



Mission



Tuscan



Farmhouse



Mid Century Modern



Contemporary



Contemporary

## 3.3 MASSING – PRIMARY VOLUMES

### BUILDING ORIENTATION

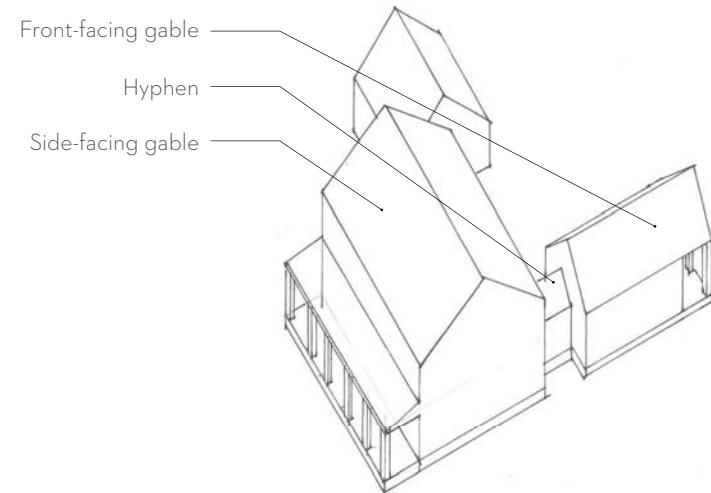
A variety of symmetrical and asymmetrical massings can be used when laying out an Oak Knoll home. First, it is important to determine the building orientation based on lot conditions. Typically, this will either be perpendicular or parallel to the street.

### SECONDARY VOLUMES

Next, an assessment of secondary volumes -- garages and additional building wings -- will help determine the appropriate roof profile. This may be gable, gambrel, hip, shed, or a combination thereof. For further information on roof profiles, see Section 3.3: Roofs.

### ADDITIVE BUILDING ELEMENTS

Ultimately, the massing should be simple and understated, and should provide a backdrop to unique building elements like porches, dormers, and other details while logically shaping the interior spaces.



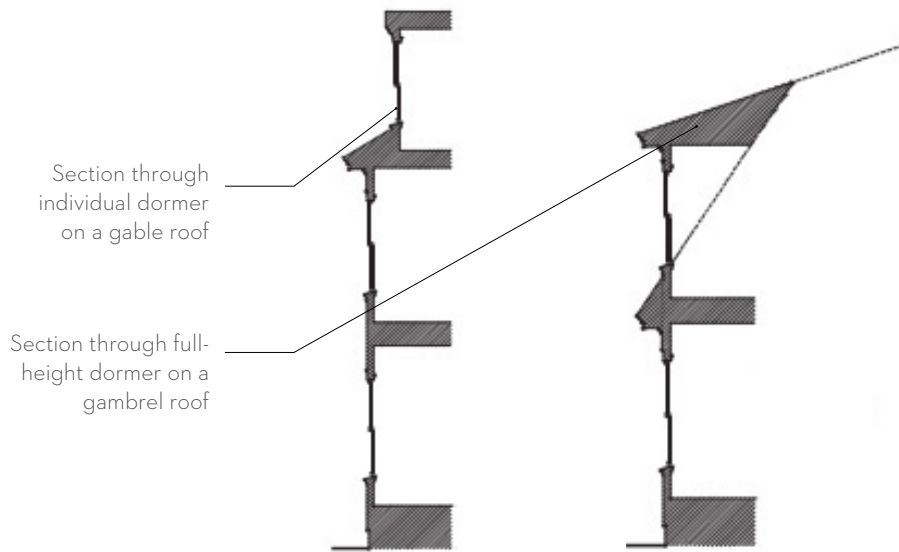
Primary and Secondary Volumes



# 3.4 ROOFS

## ROOF TYPES AND SLOPES

Acceptable roof types include front-facing and side-facing gable, gambrel, hip, and shed roofs, or some combination thereof. Flat roofs are permissible but will be reviewed during Design Review for their visual impact on adjacent properties. Please refer to the Architectural Style Matrix on pg 30 for roof design recommendations by style.



12/12 steeper pitch roof with dormers



3/12 shed roof



12/12 steeper pitch roof with dormers



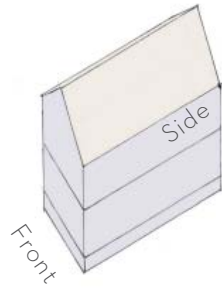
4/12 tile roof

1. PRIMARY VOLUME

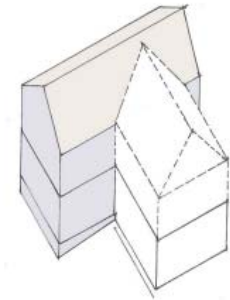
2. SECONDARY VOLUME

DETACHED LOTS

- Most small lots will have Primary Volumes that are oriented perpendicular to the street.
- May be one to two-and-a-half stories.

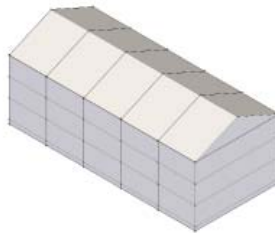


- Most Secondary Volumes on small lots will be oriented perpendicular to Primary Volumes
- Shall be setback from the Primary Volume a minimum of five (5) feet
- May be one to 2.5 stories.
- May be detached from the Primary Volume.

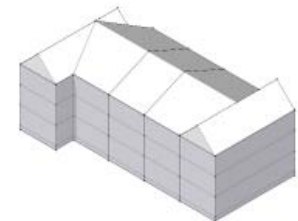


ATTACHED UNITS - TOWNHOMES

- Primary Volumes oriented parallel to the street or entry walk
- May be three to four stories



- Create secondary volumes to differentiate roofscape where appropriate
- Corner Units should be differentiated

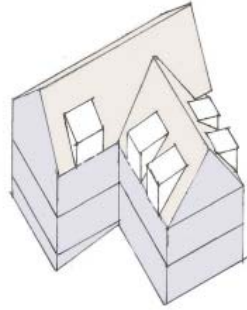


### 3. COMPONENTS/FEATURES

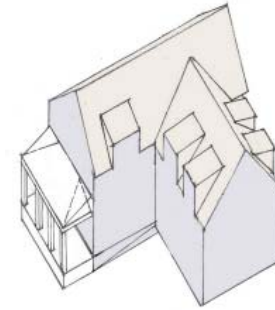
### 4. PORCHES

#### DETACHED LOTS

- Dormers, chimneys, bay windows, and other building components may be added to Primary and Secondary Volumes.

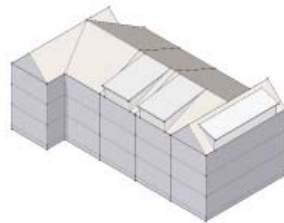


- Porches may be single-bay, full-width, wraparound or stacked.
- Refer to pages 46 & 47 for examples of porch types.

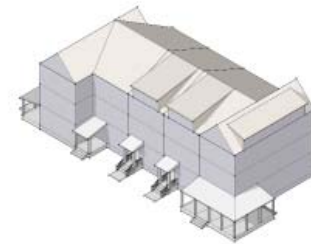


#### ATTACHED LOTS - TOWNHOMES

- Dormers, chimneys, bay windows, and other building components may be added to Primary and Secondary Volumes.

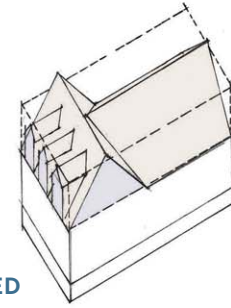
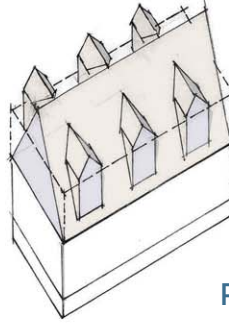
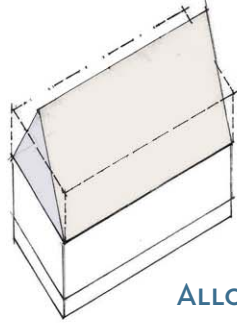
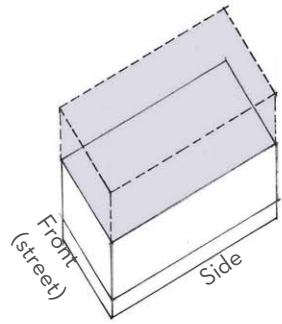


- Porches may be single-bay, full-width, wraparound or stacked.
- Refer to pages 46 & 47 for examples of porch types.

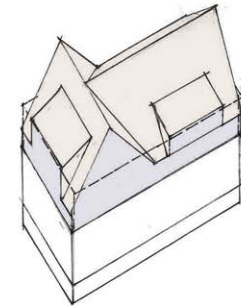
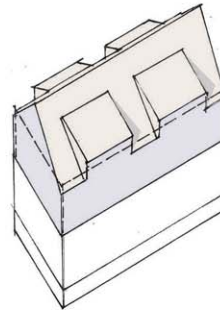
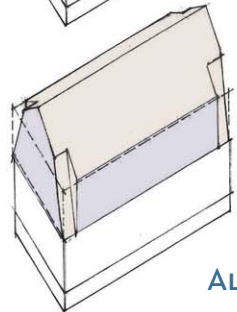
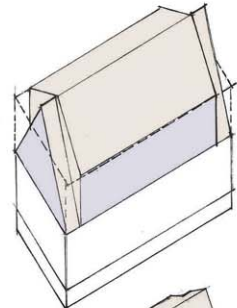
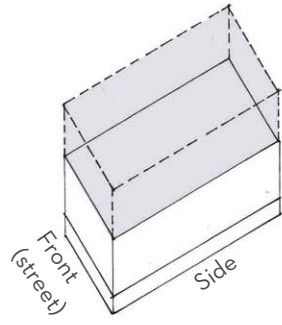
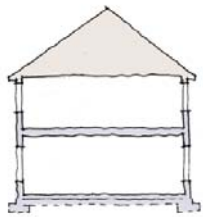
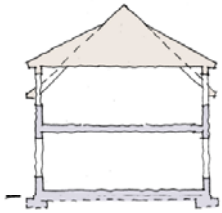


ROOF & DORMER OPTIONS- PERPENDICULAR TO THE STREET

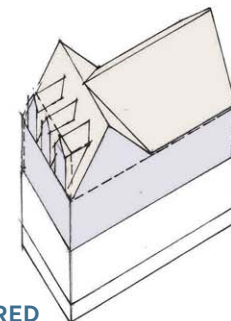
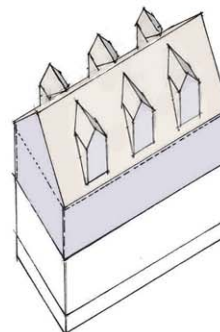
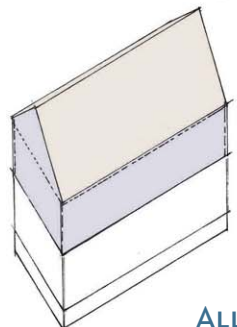
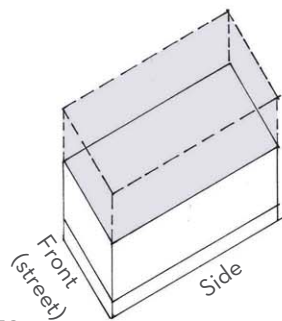
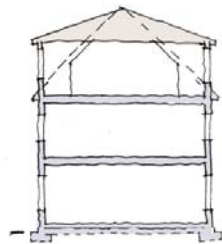
1.5 STORIES



2 STORIES

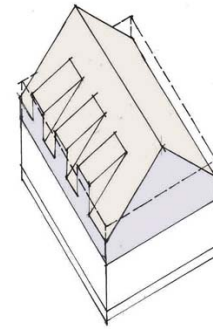
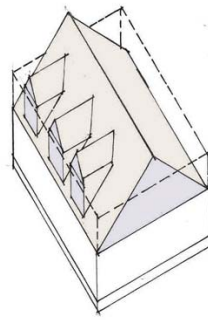
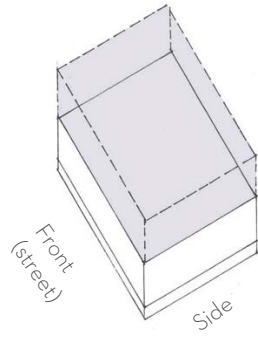


2.5 STORIES



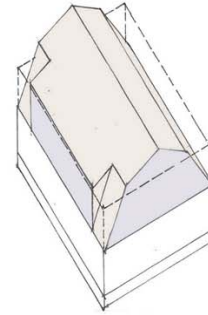
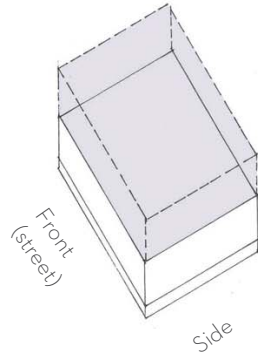
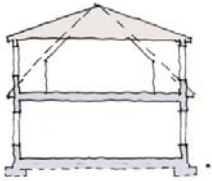
# ROOF & DORMER OPTIONS- PARALLEL TO THE STREET

1.5 STORIES



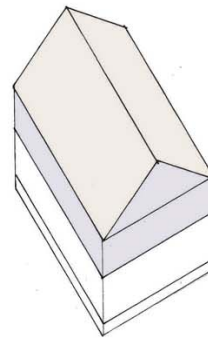
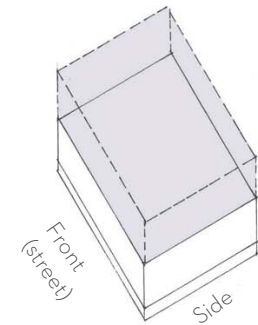
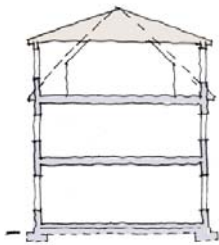
PREFERRED

2 STORIES



ALLOWED

2.5 STORIES



ALLOWED

## ROOF MATERIALS

Please refer to the Appendix for acceptable roof materials.

## SUCCESSFUL ROOF DESIGNS

While a variety of roof types suit the Oak Knoll home, successful designs will support the simple massing of primary and secondary volumes and interior spaces, visually reduce the scale of the home, and provide adequate shading.

## DORMER SIZING

Dormers are an important element that allows upper stories of a home to be usable as well as visually diminishing the scale of the upper level. Dormers may contain one window, or a string of windows, depending on the functional needs of the spaces within.

Dormer eaves and overhang details should be scaled accordingly, and should be consistent with the overall roof details.

All dormers shall be functional and bring light into occupiable interior spaces.

## DORMER SIDING

Siding may be applied on the side walls of dormers either horizontally or sloped to match the adjacent roof. Siding may be applied on the front face of dormers only upon approval by the DRC.



1/2 Story 2nd floor with dormers

## 3.5 HIGH VISIBILITY FACADES

High Visibility Facades are visible from the street and from open space. Please refer to neighborhood site plans in Chapter 2.0: Planning Guidelines for the anticipated locations of High Visibility Facades. High Visibility Facades are entry facades; hillside rear facades (facing the view); and corner lot facades. The High Visibility Facade of all homes should welcome residents, be inviting to neighbors and guests, and must follow guidelines defined in this section.

### HIGH VISIBILITY FACADES - OPEN SPACE

While the entry facades of all homes in Oak Knoll shall be considered High Visibility Facades, select facades that face the Open Space shall also be considered High Visibility Facades. Use of porches and balconies are encouraged on these facades, and they should be designed with their visibility in mind, as well as the privacy of the homeowner.

### CORNER LOT FACADES

Corner lot facades should carry distinct compositional and material elements from the entry facade to the side facade, to create a dynamic perspective of the home from the street. Corner lot facades shall have consistent details and elements on elevations facing both streets. The rhythm of openings established on the entry facade shall continue on the side facade that faces the street, and divided window patterns shall be consistent on both elevations. If shutters are incorporated on the entry facade they shall likewise be incorporated on the side facade that faces the street.

### ADDITIVE FACADE ELEMENTS

Once the design of the High Visibility Facade openings has been determined, additive building elements like porches and dormers should follow the rhythm of the facade composition. Wraparound porches are encouraged on corner lots, as well as projected window bays. Porch columns should be spaced equally to either side of facade openings. Satellite dishes and external antennas are not permitted on High Visibility Facades.

### SUCCESSFUL EXECUTION OF SECONDARY FACADES

Secondary Facades that successfully follow the above guidelines will support a composition of the Bay Area home that is balanced and continuous rather than one-sided and fragmented.



Secondary Facades

## 3.6 OPENINGS - WINDOWS

### WINDOW TYPES

Homes may have single-hung, double-hung, triple-hung, awning, and casement windows. Square transom windows are allowed on Secondary Facades, and may be used in bedrooms, bathrooms, stairwells, etc. Arch windows shall be permitted where appropriate to the style. Please refer to the Architectural Style Matrix on pg 30 for window recommendations by style. Bay windows may encroach into front and rear yard as permitted by zoning and building codes. All windows shall be fully trimmed on the exterior with appropriate head, side, and sill details. Mitered joints are not permitted.

### WINDOW PROPORTIONS

Windows may be mulled together to achieve wider expanses of glass, but shall not exceed 12' in total width. Windows may have no muntins, a 2 over 2, 4 over 1, 4 over 4, 6 over 1, or 6 over 6 muntin pattern. True divided lites are preferred, simulated divided lites are acceptable, and removable muntins are prohibited.

### SHUTTERS

If shutters are incorporated in Primary Facades they should likewise be incorporated in High Visibility Facades. Each shutter shall be a minimum of half of the window dimension. Louvered or panelized shutters are acceptable.



Casement Style windows



Double-hung windows

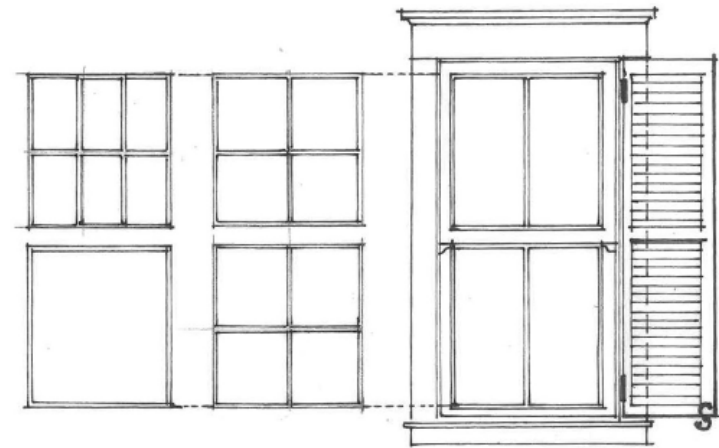


Casement Style windows

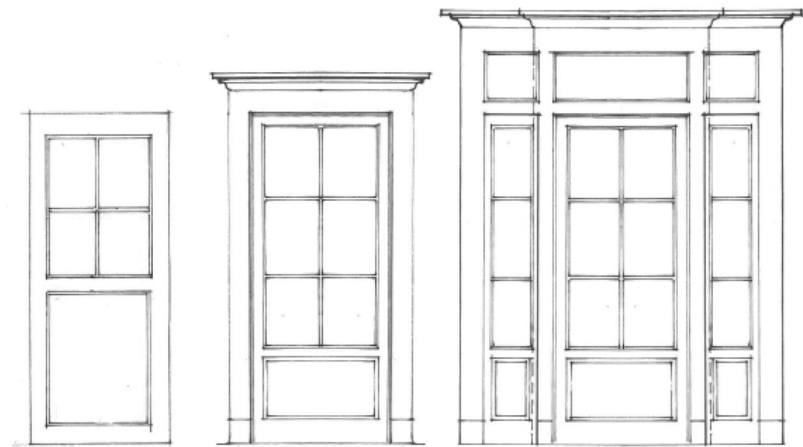




Casement Style Windows



6 over 1; 4 over 4; and 2 over 2 muntin patterns



## 3.7 EXTERIOR DOORS

Exterior Main Entry doors can be flat or traditionally paneled doors. Please refer to the Architectural Style Matrix on pg 30 for design recommendations by style.

## 3.8 PORCHES & STOOPS

### TYPES

The porch or stoop is the signature element of an Oak Knoll home. As such, all homes must have either a porch or stoop. Multiple types are acceptable and encouraged, from single-bay to full-width, wraparound, and stacked. Pages 41 and 42 illustrate examples of porch and stoop types. Entry Courts are also an entry feature of certain styles of homes and are addressed in the landscape section.

### PORCH DIMENSIONS

All porches or stoops on detached homes shall be a minimum of 30 sf of covered area, and designed in a manner appropriate to the style of architecture.

Porches shall be elevated a minimum of 8 (8) inches above grade. Wherever possible, porch decks should not exceed thirty (30) inches above grade; the necessity of a guard rail is to be avoided.

Covered porches are allowed encroachments into front yard setbacks, see lot diagrams on pages 24-27.



Entry Porches

## PORCH DETAILS

Porch columns should be with round or square profiles, and shall have a minimum dimension of eight (6) inches. Columns shall have defined capitals and bases. Porch design should be consistent with the chosen style of the house. Please refer to the Architectural Style Matrix on pg 30 for design recommendations by style.

Porch beams shall align over supporting columns. Porch eaves and rakes should extend beyond porch beams. Porch ceilings must be fully trimmed.

Porch railings and balusters shall be round or square and set between a top and bottom rail. The bottom rail shall be 4" above the porch deck and the top rail shall be elevated 34-36" above the porch deck.

## STOOPS

Stoops should be detailed in a similar way to porches, but are smaller in size and may indent into the building wall. The landing should be a minimum of five (4) feet deep by six (5) feet wide and a minimum of 50% of the landing should be covered.



Entry Porch



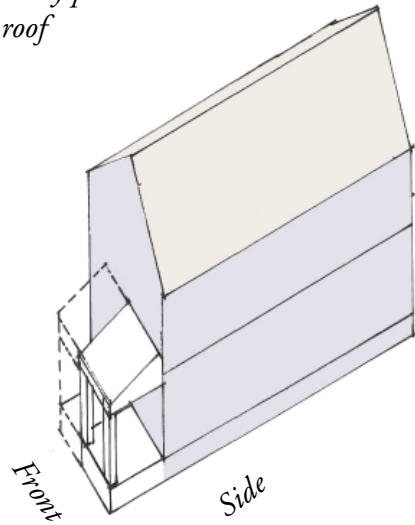
Entry Stoop



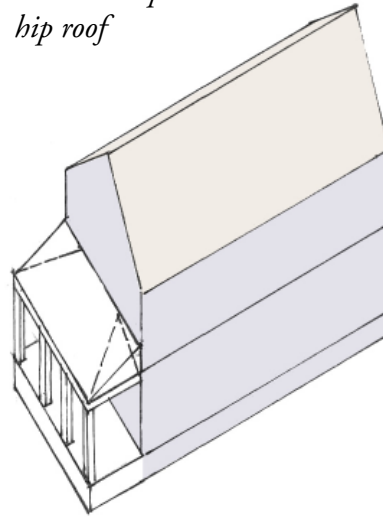
Entry Porch

3.6 PORCHES- *Porch and Stoop Types*

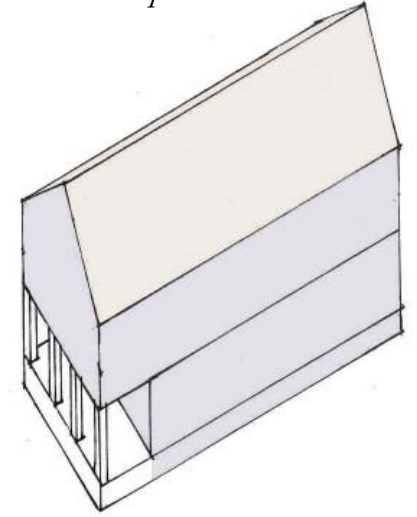
*Single-bay porch with shed roof*



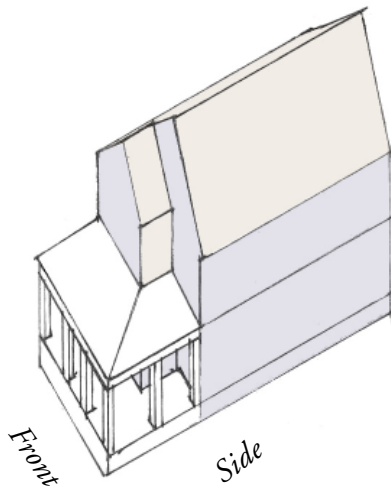
*Full-width porch with hip roof*



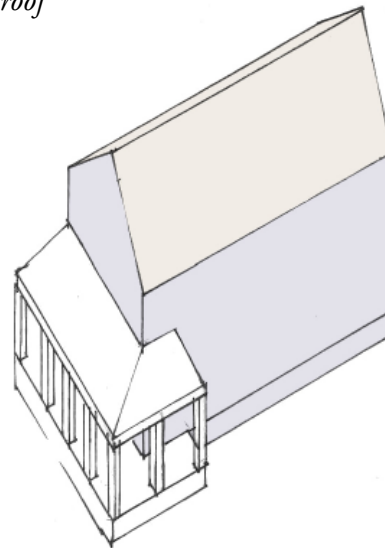
*Full-width porch*



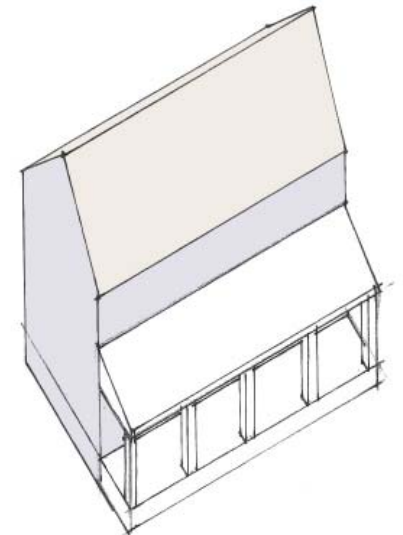
*Wraparound porch with hip roof*



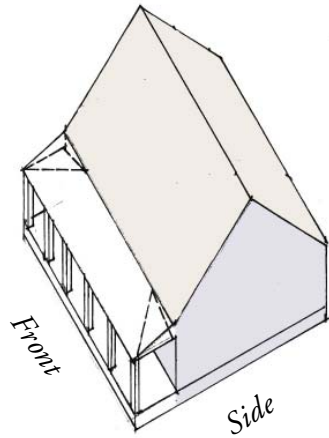
*Wraparound porch with hip roof*



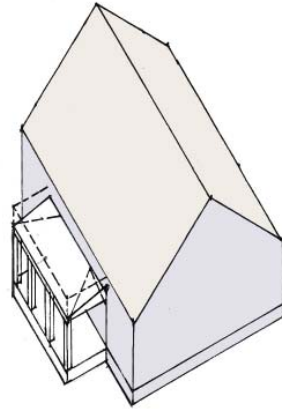
*Side porch with shed roof*



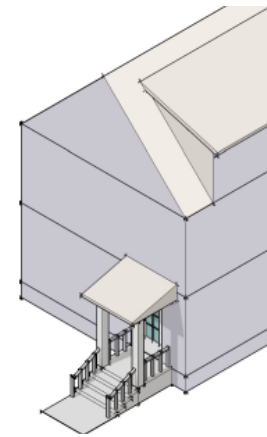
*Full-width porch*



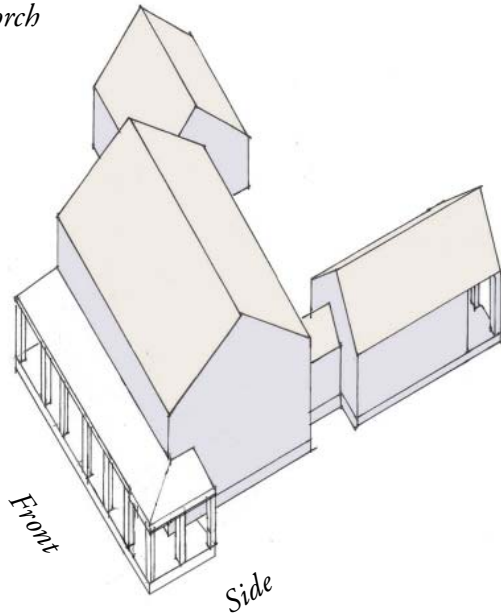
*Single-bay porch*



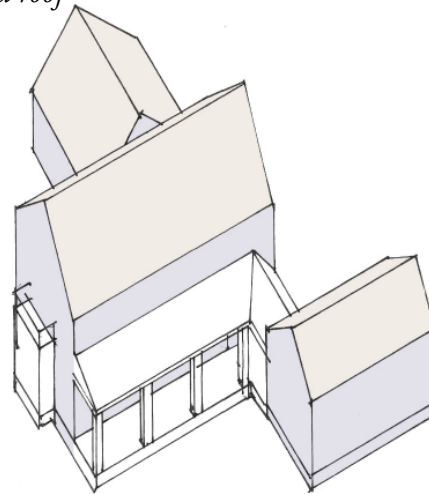
*Standard Stoop*



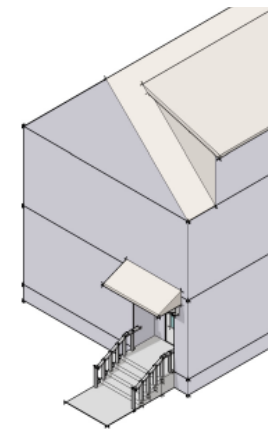
*Full-width porch*



*Single-bay porch with flat roof; side porch with shed roof*



*Inset Stoop*



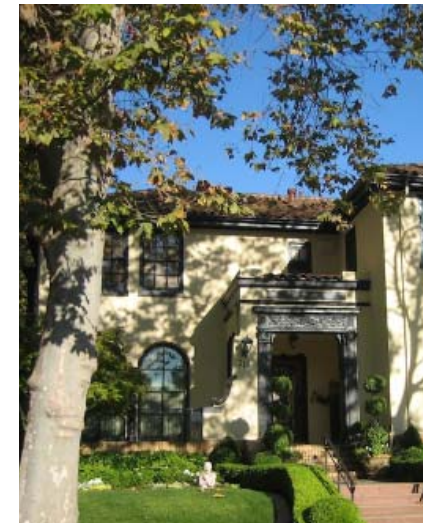
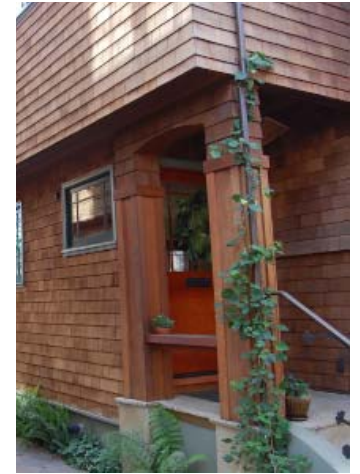
## PORCH MATERIALS

Porches may be constructed from wood, wood-like composites, stucco, or concrete faced with brick or stone veneer. Entry stoops, porches, and stairs that are constructed with wood shall be screened with wood or manufactured wood trim or lattice.

Entry stoops or porches constructed of masonry may have stair risers and treads constructed of masonry and may be finished with brick pavers. When finished walking surfaces, including stair treads, are brick pavers, all vertical surfaces from the top of the porch deck to grade shall be of brick. Bare or painted concrete is also a permitted finish material.

The porch ceiling may be composite bead-board planks or wood with appropriate molding.

Composites, and fiberglass trim moldings are allowed on a case-by-case basis as reviewed in Design Review. Vinyl trim is prohibited. Refer to Chapter 4.0: Landscape for planting requirements at base of porch.



## 3.9 GARAGES

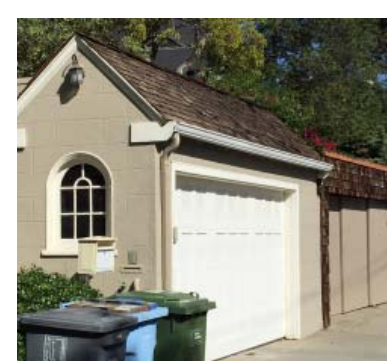
### GARAGE DIMENSIONS

The design and placement of garages is important to creation of a pleasing streetscape and a domestic 'neighborhood' feel. A minimum setback is required to allow a parked car in front of garage within the lot and not overlapping with adjacent sidewalks or common drive aisles. Exceptions may be granted through the Design Review process to allow the garage face closer to the front lot line per city codes.

Garages preferably will have individual carriage doors, but double garage doors no wider than 15' are permissible as well. Garage doors shall not exceed eight (8) feet in height, and shall be recessed from the exterior garage face a minimum of six (6) inches. Garage doors should be traditionally panelled, and windows courses at the upper panel are desirable features. Single car garages and tandem garages are also encouraged where circumstances favor this layout on the lot.

### GARAGE DETAILS

Where the garage is not integrated into the primary mass of the home, they shall be considered a Secondary Volume, and shall have the same or shallower roof pitch than that of the Primary Volume of the home, and set back from the Primary Volume. Garage doors should incorporate details that complement the design of Entry and Secondary Facades, such as windows, patterned paneling, trellis and roof details.



## 3.10 LIGHTING

### ARCHITECTURAL LIGHTING

A well-lighted porch or stoop is a critical element to the Oak Knoll streetscape. As such, all homes must have porch lighting appropriate to the style of the house.

Garages should also have exterior lighting integrated over or adjacent to the door bays.





## 4.0 LANDSCAPE GUIDELINES



## 4.1 LANDSCAPE VISION

The landscape design for Oak Knoll is intended to integrate the new community into an existing context of hillsides, creeks and drainages, and oak woodland. Proposed landscape elements will reinforce the new patterns of buildings, roads, public spaces, and recreational and open space amenities, creating a framework for the new community while also providing for habitat restoration and sustainability.

The proposed landscape elements are also intended to celebrate the rich heritage and historic context of the North Oakland communities, celebrating historic community values of respect for land, nature, and a tradition of craftsmanship that was expressed by neighborhood community designs at the turn-of-the century in the East Bay neighborhoods of Berkeley, Claremont, Piedmont, and Rockridge.

The community landscape is shaped to provide accessible open space and access to nature, and to encourage active and healthy outdoor living. Neighborhoods are woven together with natural open space settings and carefully designed streets with generous sidewalks, punctuated by neighborhood and pocket parks. Landscape materials emphasize the use of native materials and plant communities within natural settings, intended to restore the site's ecology and benefit wildlife, while presenting a unique, nature-rich environment for the residents of the community.

In order to promote the conservation and efficient use of water, landscaping shall comply with the provisions established in the California Code of Regulations Title 23, Division 2, Chapter 2.7 Model Water Efficient Landscape Ordinance (MWELO).

## 4.2 STREETScape DESIGN

Street trees are important thematic elements of the neighborhoods, where strong patterns reinforce the neighborhood identity, define road edges and provide a shaded overstory. A strong overhead tree canopy will modify the climate and bring streets into a more balanced scale with the overall landscape.

The community streetscape features a natural setting of Coastal Oak woodland, comprised of native London Plane and Coast Live Oak along street edges. Plantings are low groundcovers in composed drifts, using selections from the Approved Plant List. (Refer to the PDP for public street sections.)

The Creekside Village, Retail Village, Creekside Townhomes and Garden Court neighborhoods utilize native Oak woodland as the predominant framework plantings, with London Plane, Trident Maple, Red Maple and Brisbane Box as canopy street or parking lot trees.

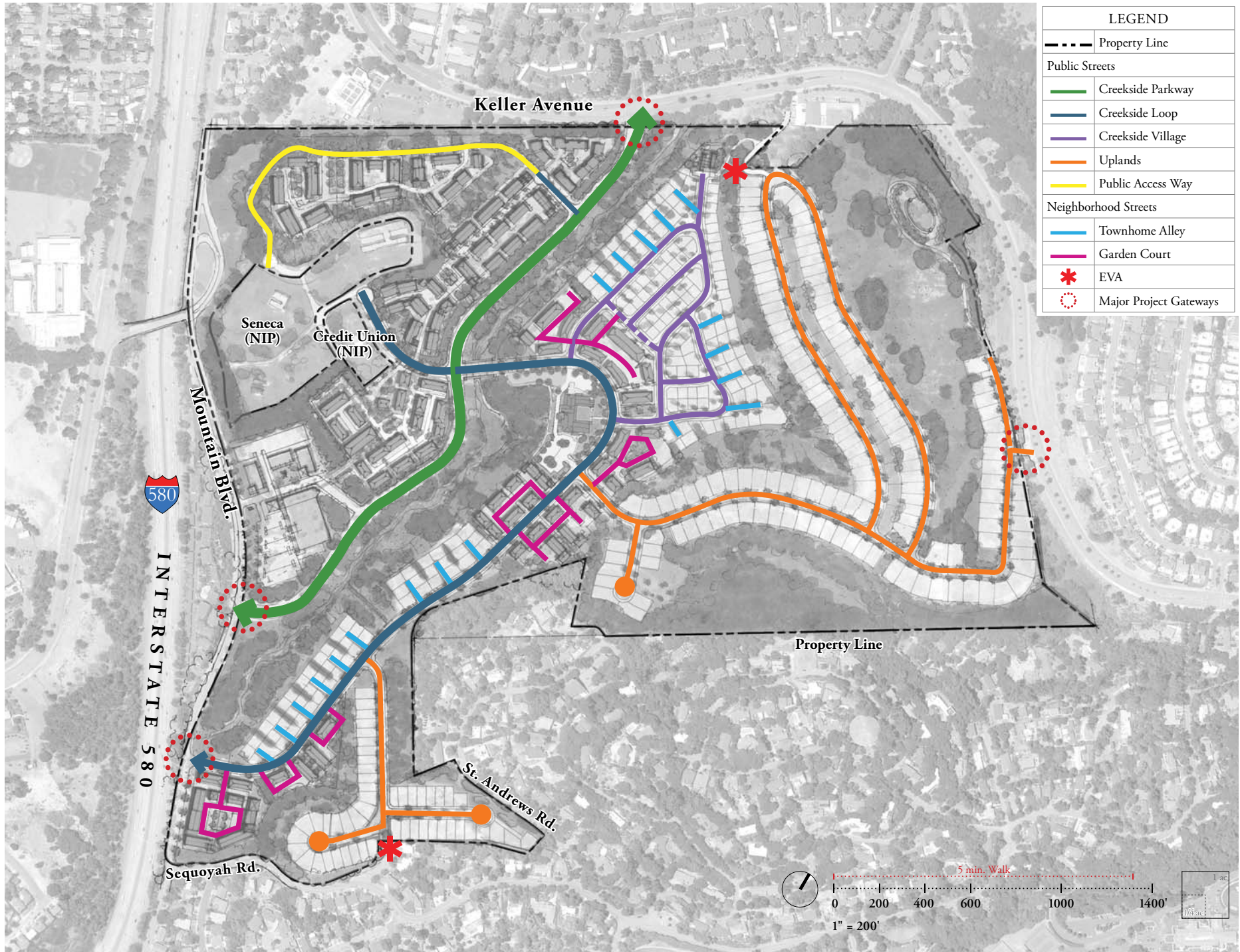


Figure 4.1- Circulation Network

	CREEKSIDE PARKWAY	CREEKSIDE LOOP	CREEKSIDE VILLAGE	UPLANDS	TOWNHOME ALLEY	GARDEN COURT
<b>On-street Parking</b>	Parallel on Both Sides	Parallel on Both Sides	Primary: Parallel on 1 side Secondary: None	Primary: Parallel on 2 sides Secondary: Parallel on 1 side	Primary: Parallel on 2 sides Secondary: Parallel on 1 side	None
<b>Bike Lane</b>	Class I multi-use path	Class III	None	None	None	None
<b>Landscape Character</b>	- Large deciduous street tree	- Large deciduous street trees	- Large deciduous street trees with medium evergreen and deciduous alley trees  - Fall color	- Large evergreen street tree	- Medium deciduous trees  - Fall color	- Medium deciduous trees  - Fall color
<b>Drainage</b>	Bulb-out Infiltration Basins in ROW	Bulb-out Infiltration Basins in ROW	Bulb-out Infiltration Basins in ROW/Parks	Bulb-out Infiltration Basins in ROW/ In Board Bioswales	In-tract detention and infiltration basins	In-tract infiltration basins
<b>Drainage in R.O.W.</b>	Yes	Yes	Yes	Yes	No	No
<b>Representative Landscape Species</b>	STREET TREE: - London Plane	STREET TREE: - London Plane	STREET TREE: - London Plane  ALLEY TREE: - Trident Maple - 'Elegant' Brisbane Box	STREET TREE: - Coast Live Oak	STREET TREES (North Creekside): - 'Redpointe' Red Maple  (South Creekside): - Trident Maple	COURT TREE: - 'Redpointe' Red Maple



London Plane



Coast Live Oak



'Redpointe' Red Maple



Trident Maple

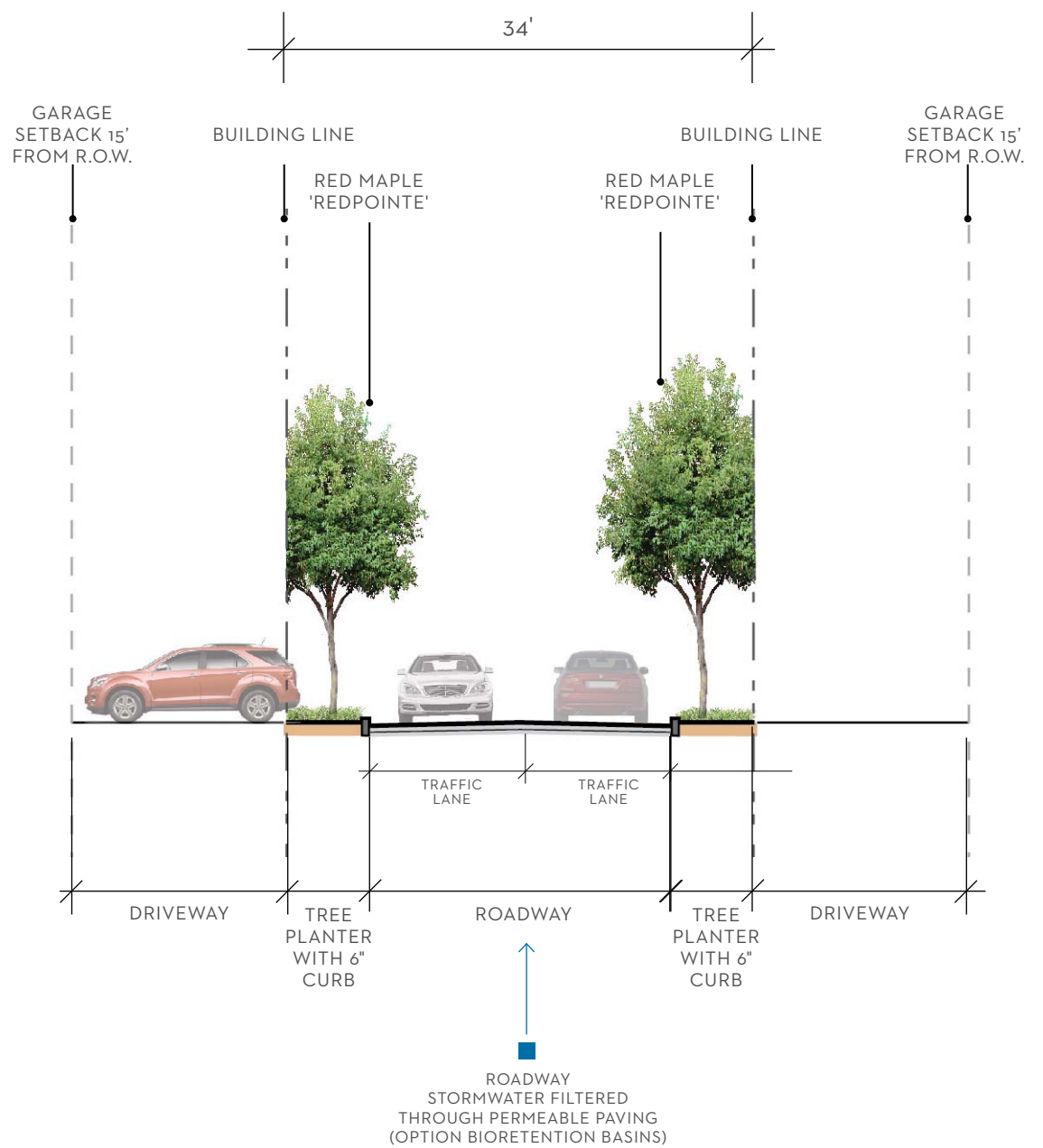


Brisbane Box

## TOWNHOME ALLEY 'TYPICAL'



## GARDEN COURT 'TYPICAL'



# Neighborhood Streetscape

## Proposed Plant List

Botanical Name	Common Name	Size/ Foliage Character									
		Native	Large Deciduous Trees >30'	Large Evergreen Trees > 30'	Small Deciduous Trees <30'	Small Evergreen Trees <30'	Large Deciduous Shrubs >4'	Large Evergreen Shrubs >4'	Small Deciduous Shrubs <4'	Small Evergreen Shrubs <4'	Fall Color
<b>Trees</b>											
<i>Acer buergeranum</i>	Trident Maple				x						x
<i>Acer rubrum</i> 'Redpointe'	Red Maple		x								x
<i>Magnolia soulangiana</i> 'Alexandrina'	Saucer Magnolia										
<i>Platanus acerifolia</i> 'Yarwood' or 'Columbia'	London Plane		x								x
<i>Quercus agrifolia</i>	Coast Live Oak	x		x							x
<i>Sequoia sempervirens</i> (Parks only)	Coast Redwood	x									
<i>Tristania laurina</i>	Brisbane Box										
<i>Tristania laurina</i> 'Elegant'	Elegant Brisbane Box					x					
<b>Shrubs</b>											
<i>Arbutus unedo</i> 'Compacta'	Compact Strawberry Tree							x			x
<i>Arctostaphylos densiflora</i> 'Howard McMinn'	Vine Hill Manzanita	x						x			
<i>Arctostaphylos densiflora</i> 'Lutsko's Pink'	Manzanita	x						x			
<i>Arctostaphylos hookeri</i> 'Wayside'	Monterey Manzanita	x							x		
<i>Ceanothus</i> 'Dark Star'	Dark Star Wild Lilac	x						x			
<i>Ceanothus</i> 'Julia Phelps'	Julia Phelps Lilac	x						x			
<i>Cercis occidentalis</i>	Western Redbud	x					x			x	
<i>Heteromeles arbutifolia</i>	Toyon										
<i>Mahonia</i> 'Golden Abundance'	Oregon Grape										
<i>Phormium</i> spp.	Flax	x						x			
<i>Rhamnus</i> 'Mound San Bruno'	Mound San Bruno Coffeeberry									x	
<i>Rhamnus californica</i> 'Eve Case'	Eve Case Coffeeberry	x						x			
<i>Rhamnus californica</i> 'Seaview'	Seaview Coffeeberry	x						x			
<i>Rhamnus californica</i> 'Leatherneck'	Leatherneck Coffeeberry	x								x	
<i>Rosmarinus</i> spp.	Rosemary	x						x			
<i>Salvia leucantha</i>	Mexican Bush Sage	x									



# Neighborhood Streetscape

## Proposed Plant List

Botanical Name	Common Name	Native
<b>Ground Covers, Perennials and Grasses</b>		
<i>Anigozanthos cultivars (dwarf)</i>	Kangaroo Paws	
<i>Arctostaphylos 'Emerald Carpet'</i>	Emerald Carpet Manzanita	x
<i>Arctostaphylos edmundsii 'Carmel Sur'</i>	Carmel Sur Manzanita	x
<i>Arctostaphylos uva-ursi 'Point Reyes'</i>	Point Reyes Manzanita	x
<i>Berberis 'Crimson Pygmy'</i>	Berberis	
<i>Calamagrostis foliosa</i>	Pacific Reed Grass	x
<i>Ceanothus gloriosus exaltatus 'Valley Violet'</i>	Wild Lilac	x
<i>Cotoneaster 'Lowfast' and 'Coral Beauty'</i>	Cotoneaster	
<i>Echium fastuosum</i>	Pride of Madeira	
<i>Eriogonum fasciculatum</i>	California Buckwheat	x
<i>Erisimum linifolium 'Bowles Mauve'</i>	Wallflower	
<i>Festuca mairei</i>	Atlas Fescue	
<i>Festuca 'Molate'</i>	Molate Fescue	x
<i>Festuca 'Siskiyou Blue'</i>	Fescue	x
<i>Lavandula angustifolia</i>	English Lavender	
<i>Lavandula ang. Hidcote Improved</i>	Hidcote Lavender	
<i>Myoporum parvifolium 'Putah Creek'</i>	Creeping Myoporum	
<i>Pennisetum spathiolatum</i>	Slender Veldt Grass	
<i>Ribes viburnifolium</i>	Catalina Fragrance	x
<i>Rosmarinus 'Huntington Carpet'</i>	Huntington Carpet Rosemary	
<i>Teucrium chamaedrys dwarf</i>	Dwarf Germander	

## 4.3 OPEN SPACE DESIGN

The open space network consists of a range of open spaces including existing undisturbed open space, the restored Rifle Range Creek Corridor, revegetated hillsides and publicly accessible neighborhood parks.

- The existing grassland on the upper hillside and areas of existing preserved oak woodland are protected natural resources.
- The lower hillside will be extensively planted as a restored oak woodland natural setting, consisting of several native oak species, Toyon and California Buckeye.
- The restored Rifle Range Creek will be revegetated with an appropriate and diverse native plant community to recreate a natural setting that benefits wildlife, and includes a multi-use trail serving the community. Refer to the Oak Knoll Mixed Use Community Development Project Regulatory Permit Application Package.
- Tree mitigation occurs site-wide in a variety of locations. Refer to the Tree Removal Permit Package for recommended mitigation locations and species.





LEGEND	
	Property Line
Open Space & Parks	
	Neighborhood Parks
	Community Center
	Undisturbed Open Space
	Revegetated Slope Banks
	Restored Creek Corridor
	Village Center Plaza

NOTE:  
Townhome neighborhood recreation facilities are to be determined at submittal of Final Development Plan. Minimum required open space areas will comply with Oakland Zoning Code.

Figure 4.2- Open Space and Parks

## 4.4 PARKS AND PLAZA DESIGN INTENT

There are three kinds of public parks offering active and passive recreational opportunities as described in the PDP. Larger more active community parks (see Figure 4.2) include the park areas at the Club Knoll community center and the neighborhood park near the project's northern boundary. Smaller more passive neighborhood parks are planned near the Community Center and within the townhome in-tract parcels. The plaza at the retail Village Center will serve as a social gathering and event space for the community, with decorative hardscape, benches, informal seating and canopy shade trees. Landscape guidelines for parks and plazas include:

- The parks should emphasize use of native trees, shrubs, and groundcovers in both organic and formal settings. Refer to the Neighborhood Streetscape Plant List for Proposed Plants.
- Parks should incorporate community-wide furnishings and signage consistent with other design elements in the community.
- Parks should provide shaded seating areas, picnic tables, and trash receptacles.
- Hardscape areas should avoid asphalt and large expanses of concrete. Natural stone, pavers, high quality stamped concrete, and decomposed granite should be utilized in the appropriate settings.
- A tot lot with play structures and picnic benches and lawn areas will be located at two locations and should include play equipment that is durable, safe, appropriately scaled, shaded and maintainable.
- Recreation areas such as playfields and multi-use courts should employ high quality turf and/or hardscape surfaces. Site drainage shall be extensively utilized on playfields and other higher impact natural areas.
- All fencing should be natural in character and follow these design guidelines direction on fencing.
- Parks should provide connections and wayfinding to the project-wide trail and bikeway system.
- Where public art is included in park settings, designers should coordinate with artists prior to park design to ensure art elements are well integrated, accessible and compliment other elements of the park design.

COMMUNITY PARK



RETAIL VILLAGE



NEIGHBORHOOD PARKS



## 4.5 COMMUNITY TRAILS AND RECREATION

An extensive network of trails extend throughout the community, affording a range of experiences, challenges levels and activity options, including running, hiking, walking, dog walking and accessibility.

- Emphasis is on use of natural materials and simple treatments that are intended to integrate fully with the natural setting.
- Use of reclaimed timber for benches, signage, and trail markers with opportunities to incorporate hand-crafted artisan designs.

Trails for Oak Knoll are classified as follows:

- Hiking Trails
- Multi-Use Path (Walking/ Running/Biking)
- Neighborhood Path
- Bike Route

Location of the trails systems should meet the following design objectives:

- Safety
- Connectivity to on-site and off-site destinations
- Diversity in experiences and user types
- Conforms to site attributes, opportunities and constraints



Wayfinding Sign



Trailhead Signage



Bay View telescope at Vista Point



Soil cement surface



Unique wood benches

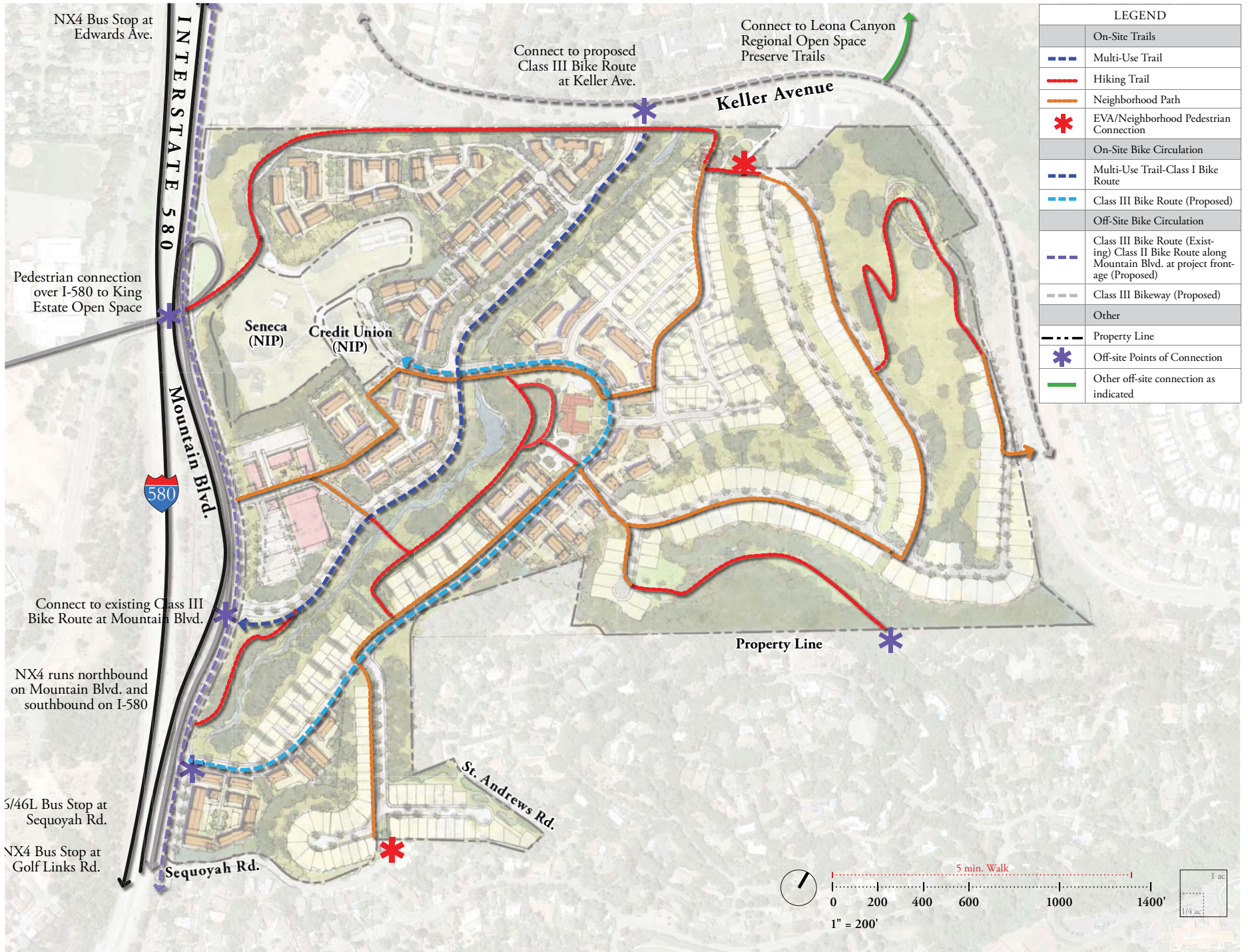


Figure 4.3- Bike and Pedestrian Trails and Connections

## 4.6 SIGNAGE AND MONUMENTATION

Stone piers with historic details are envisioned for use to celebrate the main entry points and secondary neighborhood entry points. A hierarchy of scale will differentiate the entry and neighborhood monuments, while incorporating unique details and establishing a common approach. Materials and craftsmanship will employ a unified approach to unify the community design, including stone details at the vehicular bridge crossing the creek and community center entrance.

The vision for the main entry monument on Mountain Boulevard and Keller Avenue is for a collection of native rock and trees (oaks, manzanita, etc) in a naturalized composition. Community signage may be integrated into the rock similar to the tradition of the neighborhood street names at neighborhood entries.



Community Entry Monument Concept



Stone Neighborhood Entry Piers



Stone Community Entry Sign



Community Entry Conceptual Plan - Mountain Boulevard and Creekside Parkway





Figure 4.4 - Signage and Monumentation Plan

## 4.7 WALLS

### SITE RETAINING WALLS

Retaining walls will be needed due to the sloping topography of the site. See the Appendices for Approved Retaining Wall. Low shrubs are required where space between the face of retaining walls and right of way or swale exceeds 2'. Retaining walls greater than 4' tall require top of wall planting, Retaining walls greater than 6' tall shall have vines planted on the face of walls in drifts of single species; each drift of vine planting should not exceed 50' before blending into another species.

Retaining walls taller than 30" shall incorporate a 42" cyclone fence. Fences shall be set behind the top of wall (or top of wall swale where occurs) 4' to allow for shrub massing.

The Approved Plants include the following:

Vines for Retaining Walls (plant on face in drifts of single species, 8' spacing to achieve 50% cover when mature):

- Parthenocissus tricuspidata 'Veitchii'/Dwarf Boston Ivy
- Solanum rantonetti/Potato vine

Shrub massing for base of walls, where planting area (clear of drainage swales) measures 2'-4':

- 40% Ceanothus gloriosus 'Valley Violet'/Valley Violet Wild Lilac
- 40% Westringia fruticosa 'Grey Box' or 'Jervis Gem'
- 20% Erysimum Bowle's Mauve'

Shrub massing for base of walls (clear of drainage swales) where planting area measure 4' to 10':

- 40% low shrub massings:
- Ceanothus maritimus cultivars planted in drifts alternating with Manzanita:
- "Frosty Dawn', 'Valley Violet' and/or 'Point Sierra'
- 30% Arctostaphylos hookeri 'Wayside'
- 30% Feijoa sellowiana/Pineapple Guava (taller shrub massings where walls exceed 7 feet)

The Approved Site Retaining Wall is:

- Pavestone 'Anchor Diamond Pro' Retaining Wall
- Face Style: Straight
- Color: Sandstone Blend



Vines planted on face of retaining wall

## 4.8 RESIDENTIAL LANDSCAPE DESIGN

The following principles embedded in the landscape design philosophy closely mirror the architectural design principles:

- Oak Knoll landscapes and gardens are versatile, imaginative and offer a range of expressions.
- Landscapes encourage a relaxed, informal and practical approach while accommodating contemporary lifestyles.
- Landscapes are designed to respond to unique characteristics, such as lot configuration, topography, existing vegetation, and the design and location of the house and ancillary structures.

Residential landscaping will be the responsibility of the individual Homeowners and Builders and shall be thoughtfully designed according to these guidelines. A palette of plant and landscape materials is established in these guidelines to ensure visual unity within visible lot areas while allowing room for individual creative design solutions.

## 4.9 SINGLE FAMILY RESIDENTIAL

Landscape guidelines and requirements within this Section address unique landscape conditions that occur for the single family residential lots found at Oak Knoll.

### OBJECTIVES

- Integrate the built environment with a dominant landscape.
- Blend landscapes between lots and neighborhood streets as a unified community landscape setting.
- Establish a healthy, sustainable and natural landscape environment.
- Prioritize front yard landscapes to reinforce neighborhood streets as livable, walkable places. The combination of front porches and front yard gardens within the private frontages activate the streetscape, and shall contribute to a consistent, high quality neighborhood landscape.
- Low groundcovers have low water requirements and are composed in drifts, using selections from the Approved Plant (see Appendices).

Three general landscape zones have been defined for each home site. Objectives and guidelines regarding landscaping, planting, paving, walls and fencing within each zone are described in this chapter. The three landscape zones are described as follows:

### FRONT YARD ZONE

The front yard is defined by the area between the front property line and the front face of the building, extending to the side property lines. The objectives within this zone are to reinforce and enrich the neighborhood street scene and to provide a transition from the street to the private landscape. All plantings within this zone are to occur prior to home occupation.

### SIDE YARD ZONE

The side yard areas maintain privacy for indoor and outdoor living spaces while also providing access around the home. A range of creative solutions such as using architectural site walls and fences combined with neat vertical plantings and groundcovers are encouraged. Sensitivity to neighboring lots is required in the design of side yards in order to avoid blocking light or creating maintenance and nuisance issues.

### REAR YARD ZONE

This area is defined as the area between the rear property line and the rear face of the building, extending to the side property lines. The objective within this zone is to provide privacy, pleasant outdoor living spaces and shade for building western exposures. Sensitivity to neighboring lots is required in the design of the rear yard areas in order to avoid blocking light or creating maintenance and nuisance issues.

Refer to Figure 4.5- Typical Home Site Planting Diagram for planting requirements for each zone.

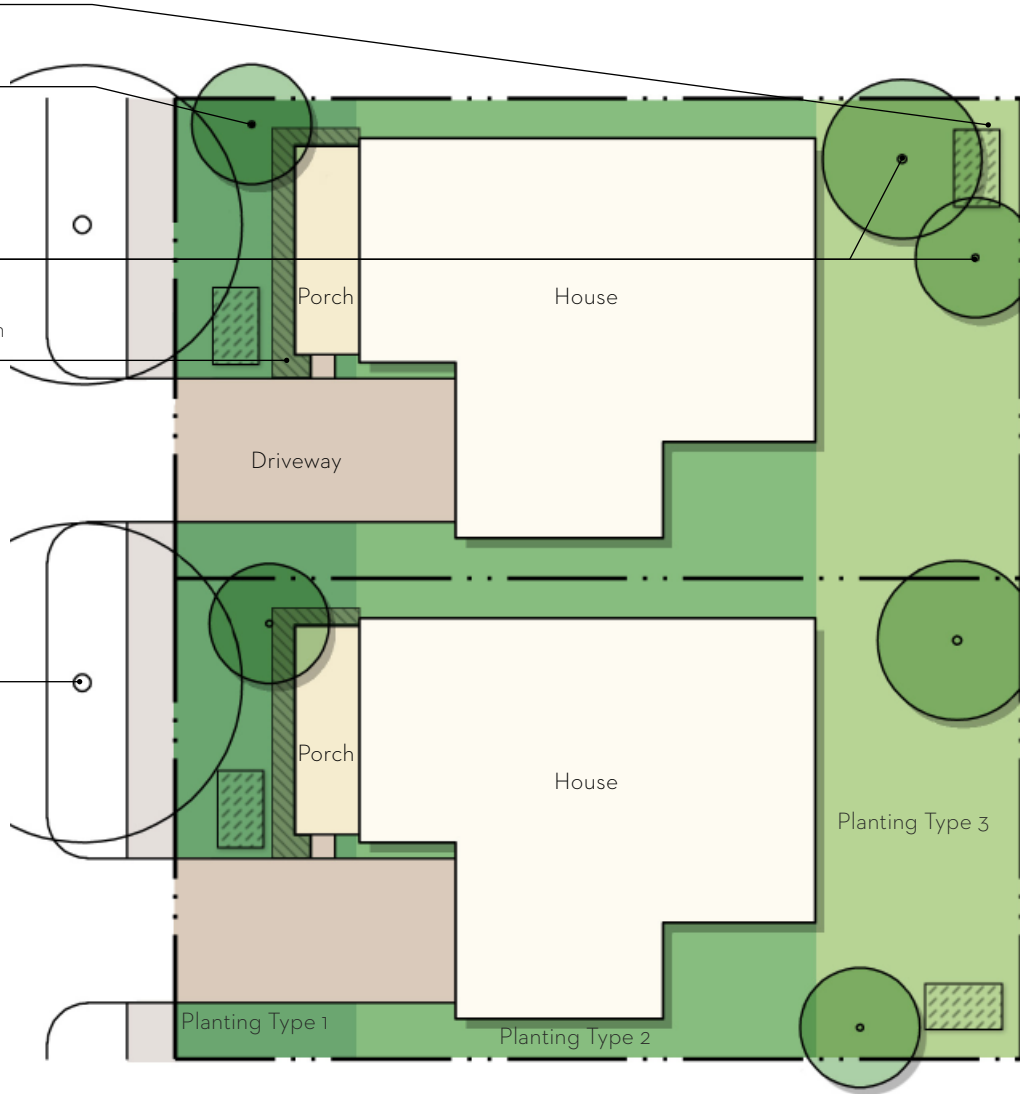
Required Rain Garden at Front and Rear Yard (60 square feet Minimum)

Required (1) Small Tree at Front Yard

Required (1) 15 gal. Medium Tree and (1) 15 gal. Small Tree at Rear Yard

Required Foundation Planting at Porches

Required Street Tree per Final Development Plan



## PLANTING PALETTE

### Small Trees

(4) 15 gallon total

- Arbutus unedo/Strawberry Tree (compact form)
- Magnolia x s. 'Lilliputian'/ Saucer Magnolia (dwarf form)

### Medium Trees

(1) 15 gallon total

- Quercus agrifolia/Coast Live Oak
- Arbutus 'Marina'/ 'Marina' Madrone

### Planting Type 1

(perennials, low shrubs and groundcover)

Lavandula angustifolia 'Hidcote'/English Lavender (dwarf cultivars) qty:10

- Arctostaphylos 'Point Reyes'/Manzanita
- Ceanothus gloriosus 'Frosty Dawn'/Wild Lilac
- Rhamnus 'Seaview'/Seaview Coffeeberry
- Festuca rubra 'Molate'/Creeping Red Fescue

### Planting Type 2

(rain garden grasses/perennials, accent taller shrubs and fence vine)

- Festuca rubra 'Molate'/Creeping Red Fescue
- Ribes sanguineum/Pink winter Currant
- Pacific Coast Iris cultivars
- Hardenbergia comptoniana/Lilac Vine

### Planting Type 3

(lawn, meadow grasses, groundcovers and low shrubs)

- Dwarf Tall Fescue lawn sod or seed
- Carex pansa/California Meadow Sedge pots or plugs
- Calamagrostis foliosa/Feather Reed Grass
- Rhamnus 'Leatherneck'/Coffeeberry

Figure 4.5: Typical Home Site Planting Diagram

## FRONT YARDS ON SLOPED LOTS

Lots located on streets with slopes greater than 10% shall be completely vegetated and may use a combination of low walls and plantings to achieve changes in grade. Plants that aid in erosion control are recommended.

### GUIDELINES

- Front yard slopes may not exceed 2:1.
- Front yards shall integrate a 60 square foot infiltration basin.
- Retaining walls, if used, shall be a maximum of 30" and set back a minimum of 2' from sidewalks.
- Retaining walls shall be integrated with shrub planting to soften and screen walls.

See Section 4.11 Retaining Walls on Lots for Approved Materials.



Sloped Lot Planting



Combination of Planting and Retaining Walls at Sloped Lots

## 4.10 SIDE AND REAR YARD FENCING

Side yard fencing is required for functional and safety reasons. All fencing shall use quality materials and follow the Approved Standard Fence Details in Appendix A.

### GUIDELINES

- All fencing may either slope with grades or adjust as a vertical offset between panels. Offsets shall not exceed 12 inches.
- All fencing between adjoining lots shall have a height of 6 feet. Corner lots and end lots are encouraged to reduce fence heights at side yards to allow views with a minimum height of 4 feet.
- All fencing shall be softened with flowering vines and shrubs to soften their visual appearance where visible from public areas.
- A few upper hillside home sites with sloped rear yards in excess of 20% shall utilize the Approved Hillside Fence in the rear yard.
- Lots with pools and spas require fencing and gates that meet all applicable codes.
- Typical side and rear yard fencing is a solid cedar or redwood fence with a stained finish.
- For upland lots with rear yards with onsite and offsite visibility, rear yard fencing, if used, shall use the Approved Hillside Fence to ensure visual consistency.



Typical Side Yard Board-on Batten Style Privacy Fence



Typical Hillside Fence where slopes exceed 20% (stepped or sloping rear yard conditions)

## 4.11 RETAINING WALLS ON LOTS

Retaining walls may be needed due to sloping topography on individual lots. Retaining walls shall be minimized and designed to fit the topography. Retaining walls in the side or rear yard shall use the Approved Retaining Wall design shown in the Appendices.

### GUIDELINES

- Use of stucco, brick, painted brick or natural stone veneer may be used for site walls in front and side yards that are visible from public areas. Materials shall complement the building architecture.
  - Wall heights shall be appropriate to context and shall not exceed 6' in height per Code.
  - Tiered walls shall be integrated landscape design.
  - Tops of walls may either slope or step with the topography as required. Walls may slope at 1:8 maximum or use vertical offsets of 12" maximum.
  - Use of vines, trailing evergreen groundcovers and shrub massings are encouraged to soften walls.
  - Retaining walls in side and rear yards- Walls not closely associated with the architecture and not visible from public areas may use the Approved Standard Wall System described in the Appendices.
  - Retaining walls in rear yards shall be located a minimum of 4' from the property line to allow room for fencing.
  - Retaining walls and steps at front walkways are allowed to resolve site grading.
- The following retaining wall materials are allowed:
    - Brick
    - Painted brick
    - Natural stone veneer
    - Approved concrete block wall system in rear and side yards (refer to Appendices)
    - Gabions
    - Pressure-treated wood
  - The following retaining wall materials are **not** allowed:
    - Railroad ties
    - Metal cribs
    - Concrete pylons





# APPENDICES



# APPENDIX A

The following colors and materials have been assembled to give developers guidance. They are intended to communicate the vision of the Oak Knoll character. Nonetheless, creativity is encouraged, and alternatives to these materials, which adhere to the spirit of these guidelines will be considered by the DRC.

APPENDIX A - APPROVED MATERIALS & COLOR PALETTE

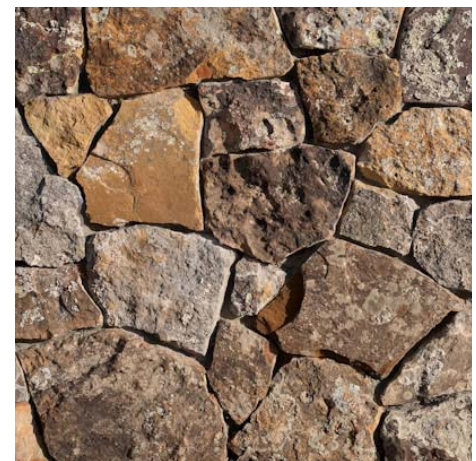
**ARCHITECTURAL BRICK (FACE BRICK) AND STONE  
VENEER PALETTE**



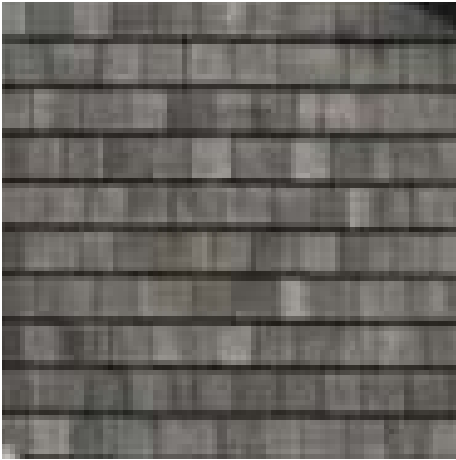
EXAMPLES OF ACCEPTABLE BRICK FINISHES



EXAMPLES OF ACCEPTABLE STONE VENEER FINISHES



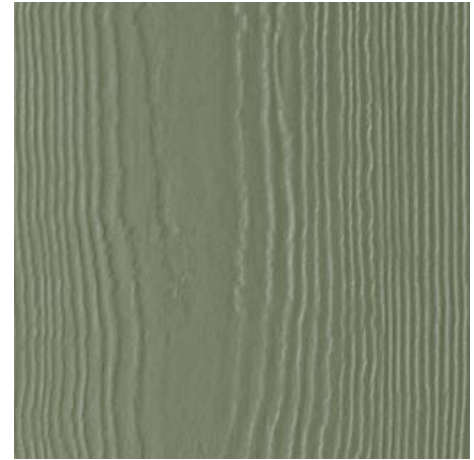
ARCHITECTURAL SIDING AND ROOF PALETTE



STAINED OR PAINTED SHINGLE SIDING



STAINED OR PAINTED SHINGLE SIDING



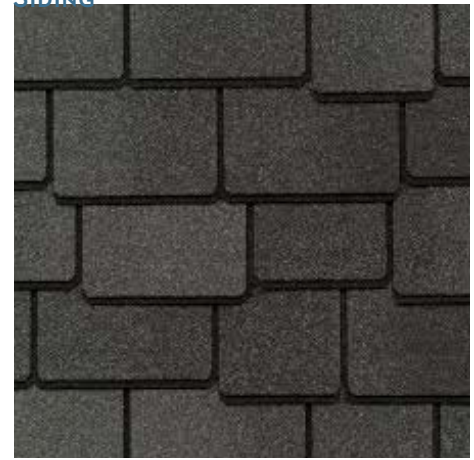
PAINTED WOOD OR WOOD COMPOSITE SIDING



CLAY TILE ROOF

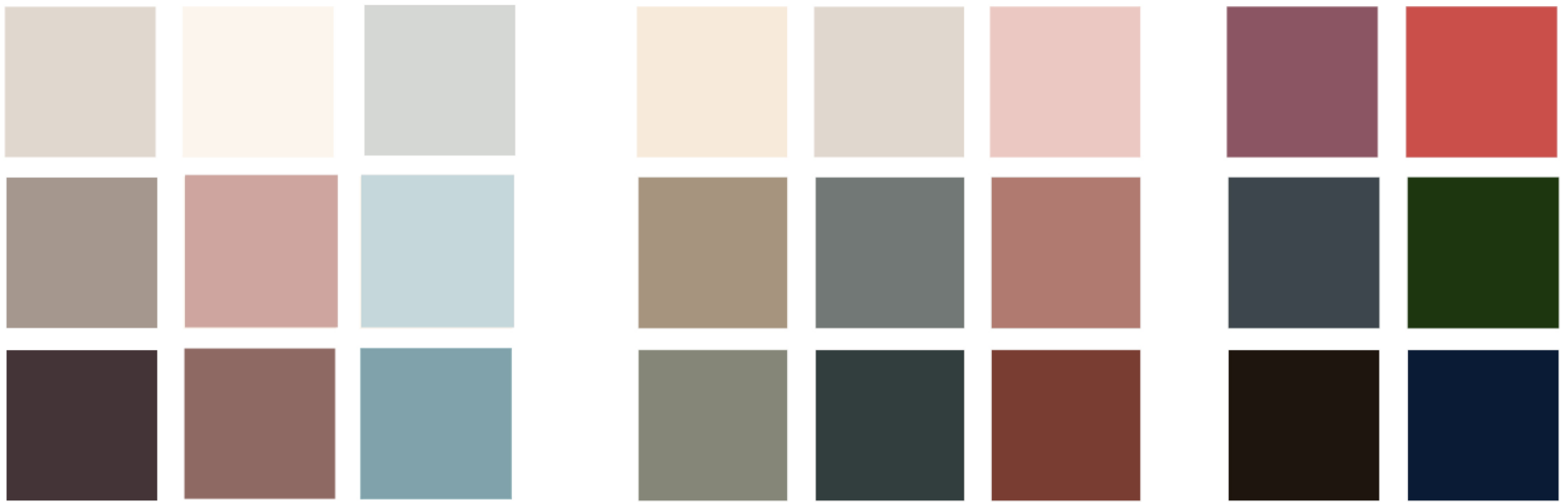


ASPHALT TILE ROOF - GRAY



ASPHALT TILE ROOF - BLACK

**ARCHITECTURAL PAINT COLORS**





# APPENDIX B

## APPROVED STANDARD RETAINING WALL SYSTEM ON LOTS

- 'Anchor Highland Stone Retaining Wall 6" Combo' (Product 876) by Pavestone, Inc. : 3 piece system, sizes 18"x12"x6", 12"x12"x6", and 6"x12"x6". Color to be determined. Cap #819. (<http://www.pavestone.com/anchor-highland-stone-retaining-wall-6-combo/>)



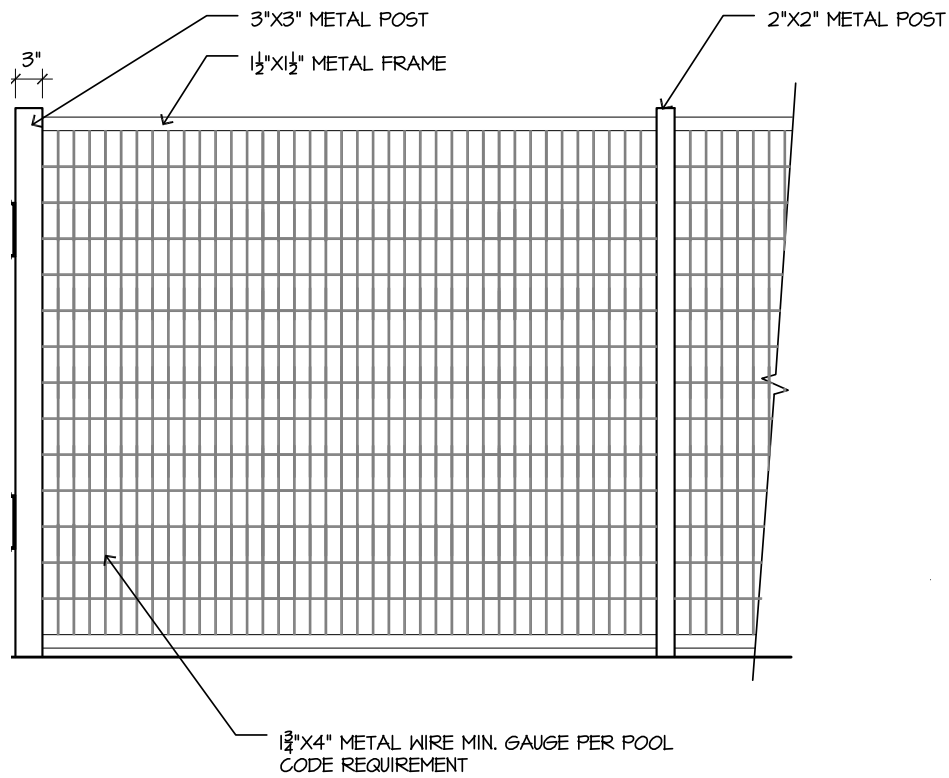


## STANDARD APPROVED SIDE YARD AND REAR YARD FENCES

- Minimum Standard Material: #1 grade Western Red Cedar or Redwood
- Stain finish: Cabot 'Red Cedar'
- Note: Both sides are finished equally
- 4x6 posts Western Red Cedar posts 6' apart
- Boards: 1x8, Battens: 1x3 (both sides), Cap: 1x6 with 1x4 facer
- Height: 6'-0"
- add low plants at base like a low grass or lirioppe



### STANDARD APPROVED GUARDRAIL



# APPENDIX C

The following Approved Plant List and Prohibited Plant List are intended to communicate the vision of the Oak Knoll landscape character. Nonetheless, creativity is encouraged, and alternatives to these materials, which adhere to the spirit of these guidelines will be considered.

APPENDIX C - APPROVED PLANT LIST

Botanical Name	Common Name	Street Trees									
		Large	Medium	Small	Native	Full Sun	Part Sun/Shade	Full Shade	Rain Garden		
<b>TREES</b>											
<i>Acer buergeranum</i>	Trident Maple		x	x		x					
<i>Arbutus 'Marina'</i>	Madrone 'Marina'		x			x					
<i>Agonis flexuosa</i>	Peppermint Tree					x					
<i>Arbutus menziesii</i>	Madrone Tree			x		x					
<i>Leucadendron hybrids</i>	Hybrid leucadendron					x					
<i>Lepotospermum laevigatum 'Dark Dancer'</i>	Dark Dancer Tea Tree					x					
<i>Magnolia grandifolia 'Little Gem'</i>	Dwarf Southern Magnolia					x					
<i>Magnolia soulangiana 'Lilliputian'</i>	Saucer Magnolia				x	x					
<i>Ceanothus 'Ray Hartman'</i>	Ray Hartman Wild Lilac			x	x	x					
<i>Cercis occidentalis</i>	Western Redbud			x	x	x	x				
<i>Heteromeles arbutifolia</i>	Toyon			x	x	x	x				
<i>Arbutus unedo</i>	Strawberry Tree			x	x	x	x				
<i>Laurus nobilis 'Saratoga'</i>	Saratoga Bay Laurel				x	x	x				
<i>Quercus agrifolia</i>	Coast Live Oak	x				x	x				
<b>SHRUBS</b>											
<i>Arctostaphylos cultivars</i>	Manzanita		x		x						
<i>Arctostaphylos densiflora 'Lutsko's Pink'</i>	Manzanita	x			x	x					
<i>Carpenteria californica</i>	Bush Anemone										
<i>Ceanothus 'Dark Star'</i>	Dark Star Wild Lilac	x			x	x					
<i>Ceanothus 'Blue Jeans'</i>	'Blue Jeans' Wild Lilac	x			x	x					
<i>Chondropetalum tectorum</i>	Cape Rush				x						x
<i>Ribes sanguineum</i>	Pink Flowering Currant		x		x	x	x				
<i>Loropetalum chinese</i>	Fringe Flower				x						
<i>Hebe species</i>	Hebe		x	x		x	x				
<i>Heteromeles arbutifolia</i>	Toyon										
<i>Fremontodendron californicum</i>	Flannel bush										
<i>Ligustrum ovaifolium</i>	California Privet										
<i>Mahonia 'Golden Abundance'</i>	Oregon Grape	x			x	x	x				
<i>Phormium spp.(dwarf form)</i>	Flax		x	x		x	x				
<i>Rhamnus 'Mound San Bruno'</i>	Mound San Bruno Coffeeberry		x		x	x	x				
<i>Rhamnus californica 'Eve Case'</i>	Eve Case Coffeeberry	x			x	x	x				
<i>Rhamnus californica 'Seaview'</i>	Seaview Coffeeberry			x	x	x	x				
<i>Rhamnus californica 'Leatherneck'</i>	Leatherneck Coffeeberry	x			x	x	x				
<i>Podocarpus spp.</i>	Fern Pine										
<i>Mimulus aurantiacus</i>	Monkeyflower		x		x	x					
<i>Ribes riburnifolium</i>	Evergreen currant										
<i>Westringia fruticosa</i>	Coast Rosemary										
<i>Leonotis leonorus</i>	Lion's Tail										

Botanical Name	Common Name	Street Trees							Notes	
		Large	Medium	Small	Native	Full Sun	Part Sun/Shade	Full Shade		Rain Garden
<b>GROUNDCOVERS, PERENNIALS AND GRASSES</b>										
<i>Anigozanthos cultivars</i>	Kangaroo Paws				x	x				
<i>Arctostaphylos 'Emerald Carpet'</i>	'Emerald Carpet' Manzanita				x	x				
<i>Arctostaphylos edmundsii 'Carmel Sur'</i>	'Carmel Sur' Manzanita				x	x				
<i>Arctostaphylos uva ursi 'Pt. Reyes'</i>	'Pt. Reyes' Manzanita				x	x				
<i>Berberis 'Crimson Pygmy'</i>	Burberry					x				
<i>Calamagrostis foliosa</i>	Pacific Reed Grass				x	x				
<i>Ceanothus cultivars</i>	Wild Lilac				x	x	x			
<i>Cotoneaster 'Lowfast' and 'Coral Beauty'</i>	Cotoneaster					x	x			
<i>Dymondia margaratae</i>	Dymondia					x				
<i>Erisimum spp.</i>	Wallflower					x				
<i>Festuca rubra 'Molate'</i>	'Molate' Red Fescue				x	x	x		x	
<i>Festuca 'Siskiyou Blue'</i>	Fescue					x				
<i>Lavandula angustifolia 'Munstead'</i>	English Lavender					x				
<i>Lavandula ang. 'Hidcote Improved'</i>	'Hidcote' Lavender					x				
<i>Myoporum parvifolium</i>	Creeping Myoporum					x				
<i>Pennisetum spathiolatum</i>	Slender Veldt Grass					x				
<i>Teucrium chamaedrys 'Nanum'</i>	Dwarf Germander					x				
<i>Iris douglasiana 'Canyon Snow'</i>	Douglas Iris				x	x	x			
<i>Euphorbia characias</i>	Euphorbia					x				
<i>Lessingia filaginifolia 'Silver Carpet'</i>	Silver Carpet Beach Aster				x	x				
<i>Carex testacea</i>	New Zealand Sedge					x				
<i>Libertia grandiflora</i>	New Zealand Iris					x	x			
<i>Calamagrostis foliosa</i>	Feather Reed Grass				x	x				
<i>Festuca glauca</i>	Blue Fescue				x	x				
<i>Festuca arundinacea</i>	Dwarf Tall Fescue				x	x				Lawn
<i>Agrostis pallens 'bronze form'</i>	Leafy Bent Grass				x	x				Lawn substitute
<i>Carex pansa</i>	California Meadow Sedge				x	x				Lawn substitute
<i>Sesleria autumnalis</i>	Autumn Moor Grass				x	x				
<i>Carex divulsa</i>	Berkeley sedge				x	x			x	
<i>Carex praegracilis</i>	Western Meadow Grass				x	x			x	
<i>Achillea spp.</i>	Yarrow									

APPENDIX C - APPROVED PLANT LIST

Botanical Name	Common Name	Street Trees	Large	Medium	Small	Native	Full Sun	Part Sun/Shade	Full Shade	Rain Garden	Notes
<b>GROUNDCOVERS, PERENNIALS AND GRASSES</b>											
<i>Aeonium</i> spp.	Canary Island Rose										
<i>Baccharis pilylaris</i> 'Pigeon Pt.'	Dwarf Coyote Bush										
<i>Dietes</i> species	Fortnight Lily										
<i>Penstemon</i> spp.	Penstemon										
<i>Salvia</i> spp.	Salvia										
<i>Stachys byzantina</i>	Lamb's Ears										
<i>Stipa pulchra</i>	Mexican Feather Grass										
<i>Zauschneria</i> spp.	California Fuchsia										
<i>Helicotrehon sempervirens</i>	Blue Oat Grass										
<i>Geranium</i> 'Rozanne'	'Rozanne' Geranium										
<i>Loropetalum</i> spp.	Chinese Fringe Flower										
<i>Lantana sellowiana</i>	Lantana										
<i>Juncus patens</i> 'Elk Blue'	California Gray Rush										
<i>Liriope muscari</i> 'Majestic'	Lily Turf										
<i>Libertia peregrinans</i> 'Gold Leaf'	New Zealand Iris										

Botanical Name	Common Name	Street Trees	Large	Medium	Small	Native	Full Sun	Part Sun/Shade	Full Shade	Rain Garden	Notes
<b>VINES</b>											
<i>Clytostoma callistegioides</i>	Lavendar Trumpet vine					x					
<i>Ficus repens</i> 'Minima'	Creeping Fig					x	x	x			
<i>Hardenbergia violacea</i>	Lilac Vine					x	x	x			
<i>Mandevilla laxa</i>	Chilean Bower Vine					x	x	x			
<i>Rosa</i> 'Cecile Brunner'	'Cecile Brunner' Roses					x	x				
<i>Solanum jasminoides</i>	Potato Vine					x	x	x			
<i>Vitis californica</i> Roger's Red	Roger's California Grape					x		x			
<i>Calystegia macrostegia</i> 'Candy Cane'	Coastal Morning Glory					x	x				
<i>Jasminum polyanthum</i>	Pink Jasmine										
<i>Gelsemium sempervirens</i>	Carolina Jessamine										

## PROHIBITED PLANT LIST

The following list of invasive species are prohibited. As information is constantly changing, this list may be updated from time to time. This list is derived from Cal-IPC.

Latin binomial / Common names

Acacia dealbata / Silver wattle  
Acacia melanoxylon / Blackwood acacia  
Acanthus mollis / Bears breech  
Agapanthus spp. / Lily of the Nile  
Ailanthus altissima / Ailanthus, Tree-of-heaven  
Albizia julibrissen / Silk floss  
Alhagi maurorum / Camelthorn  
Aptenia cordifolia / Red apple, Baby sun rose  
Arcotroche calendula / Capeweed, Cape dandelion  
Arundo donax / Giant reed, Giant cane  
Atriplex semibaccata / Australian saltbush  
Avena barbata / Slender oat  
Avena fatua / Wild oats  
Bassia hyssopifolia / Five-hook bassia, Thorn orache  
Bellardia trixago / Bellardia, Mediterranean linseed  
Brassica spp. / Mustards  
Bromus madritensis ssp. rubens / Foxtail chess  
Bromus tectorum / Cheatgrass, Downy brome  
Cardaria chalepensis / Lens-podded hoary cress  
Cardaria draba / Heart-podded hoary cress, White-top  
Cardaria pubescens / Hairy whitetop  
Carduus spp. / Thistles  
Carpobrotus edulis / Highway iceplant  
Centaurea spp. / Hardheads, Knapweed  
Centranthus rubra / Valarian  
Cirsium spp. / Thistles  
Cistus ladanifer / Crimson spot rock rose  
Conicosia pugioniformis / Narrow-leafed iceplant  
Conium maculatum / Poison hemlock  
Cortaderia spp. / Pampasgrass  
Cotoneaster spp. / Cotoneaster  
Crataegus monogyna / Singleseed hawthorn  
Cynara cardunculus / Artichoke thistle, Cardoon  
Cytisus spp. / Broom  
Delairea odorata / Cape ivy, German ivy  
Digitalis purpurea / Foxglove  
Dimorphotheca sinuata / African daisy  
Drosantemum spp. / Ice plant  
Echium candicans, E. fastuosum / Pride-of-Madeira  
Egeria densa / Brazilian egeria  
Ehrharta spp. / Veldtgrass  
Eichhornia crassipes / Water hyacinth  
Elaeagnus angustifolia / Russian olive, Oleaster  
Elaeagnus pungens / Silverberry  
Erechtites spp. / Fireweed  
Eucalyptus camaldulensis / Red gum  
Eucalyptus globulus / Bluegum  
Euphorbia spp. / Spurge  
Festuca arundinacea / Tall fescue  
Ficus carica / Edible fig, Common fig  
Foeniculum vulgare / Fennel, Sweet anise  
Gazania linearis / Gazania  
Genista spp. / Broom  
Halogeton glomeratus / Halogeton  
Hedera helix / English ivy

## APPENDIX C - APPROVED PLANT LIST

Hedera canariensis / Algerian ivy  
Helichrysum petiolare / Licorice plant  
Holcus lanatus / Common velvet grass  
Hydrilla verticillata / Hydrilla, Water thyme  
Hypericum spp. / St. John's Wort  
Ilex aquifolium / English holly  
Iris pseudacorus / Yellow flag iris  
Juniperus spp. / Juniper  
Lampranthus spp. / Ice plant  
Lepidium latifolium / Perennial pepperweed  
Leucanthemum vulgare / Ox-eye daisy  
Ligustrum lucidum / Glossy privet  
Ludwigia hexapetala / Creeping water primrose  
Ludwigia peploides / California water primrose  
Lythrum hyssopifolium / Hyssop loosestrife  
Lythrum salicaria / Purple loosestrife  
Malephora spp. / Ice plant  
Marrubium vulgare / Horehound  
Maytenus boaria / Mayten  
Mentha pulegium / Pennyroyal  
Mesembryanthemum spp. / Iceplant  
Myoporum laetum / Ngaio tree  
Myriophyllum aquaticum / Brazilian watermilfoil  
Myriophyllum spicatum / Spike watermilfoil  
Nandina spp. / Bamboo  
Olea spp. / Olive  
    \*Except Fruitless cultivar 'Swan Hill'  
Pennisetum spp. / Fountain grass  
Pistacia chinensis / Chinese pistache  
    \*Except Fruitless cultivar 'Keith Davey'  
Phalaris aquatica / Harding grass  
Pittosporum spp. / Mock orange  
Platanus acerifolia / Bloodgood plane tree  
Pyracantha spp. / Firethorn  
Retama monosperma / Bridal veil broom  
Ricinus communis / Castor bean  
Robinia pseudoacacia / Black locust  
Rubus armeniacus / Himalayan blackberry  
Saponaria officinalis / Bouncing bet  
Schinus terebinthifolius / Brazilian pepper tree  
Schismus spp. / Mediterranean grass, Arabian grass  
Senecio jacobaea / Tansy ragwort, Ivy  
Sesbania punicea / Scarlet wisteria  
Silybum spp. / Thistles  
Spartina spp. / Cord grass, Marsh grass  
Spartina patens / Salt marsh hay  
Stipa manicata / Tropical needlegrass  
Taeniatherum caput-medusae / Medusahead  
Tamarix parviflora / Tamarisk, Saltcedar  
Ulex europaeus / Common gorse  
Verbena bonariensis / Tall vervain  
Verbascum spp. / Mullein  
Vinca spp. / Periwinkle  
Zantedeschia aethiopica / Calla lily



