



OAKLAND

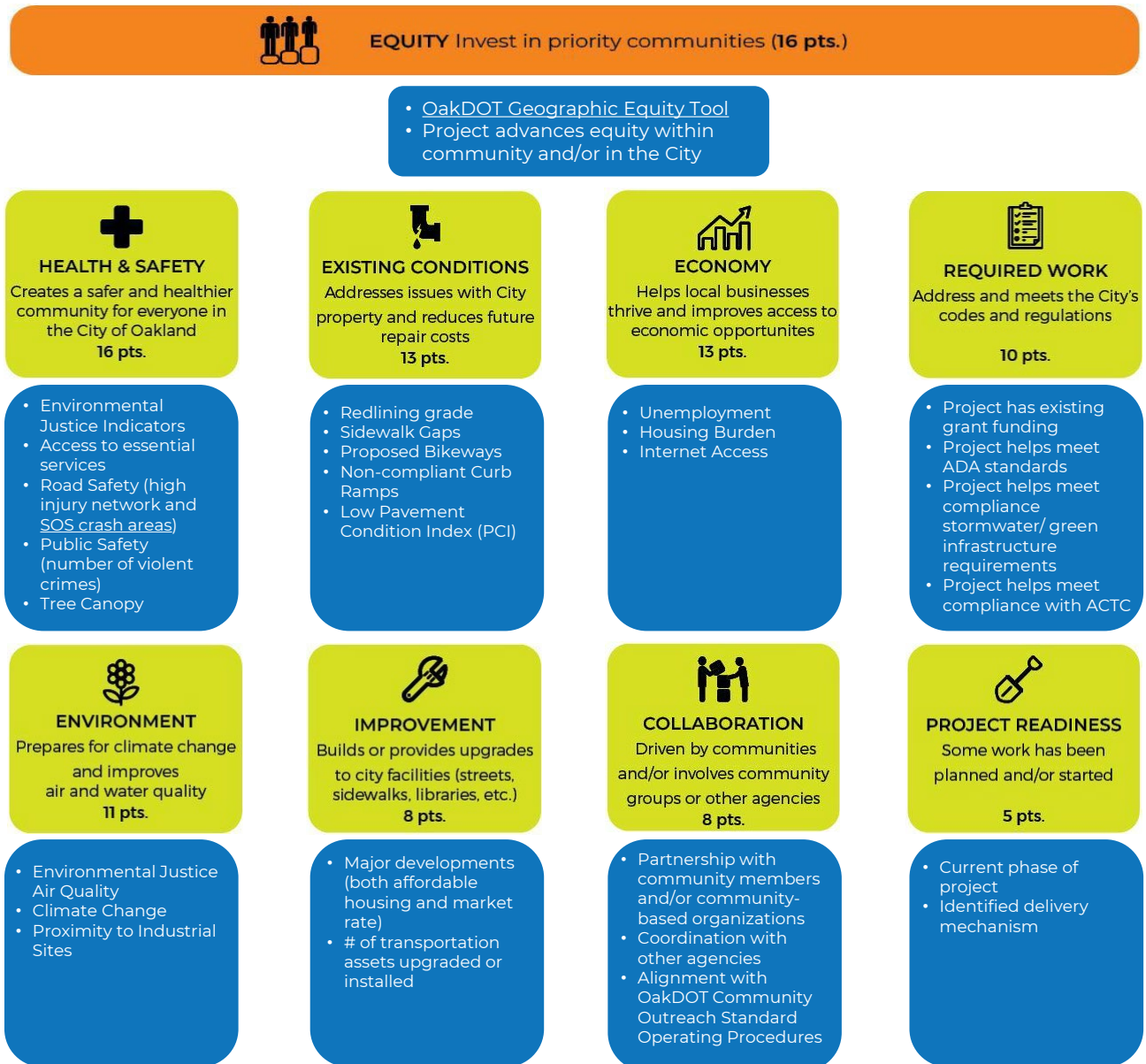
capital improvement program

Frequently Asked Questions (FAQ)

In 2018, following the passage of Measure KK – a \$600 million infrastructure bond funding transportation, infrastructure, and affordable housing – the Oakland City Council adopted a Capital Improvement Program (CIP) prioritization process that ranks projects based on the nine shown below factors that were developed through public input, engagement with the Mayor and City Council, and synthesis of City adopted plans and guiding principles. This FAQ addresses the most frequently asked questions regarding the CIP prioritization process.

1. What are the criteria and points for scoring CIP projects?

The following chart summarizes the CIP scoring rubric, including the quantitative and qualitative data sources that are referenced during the scoring process:



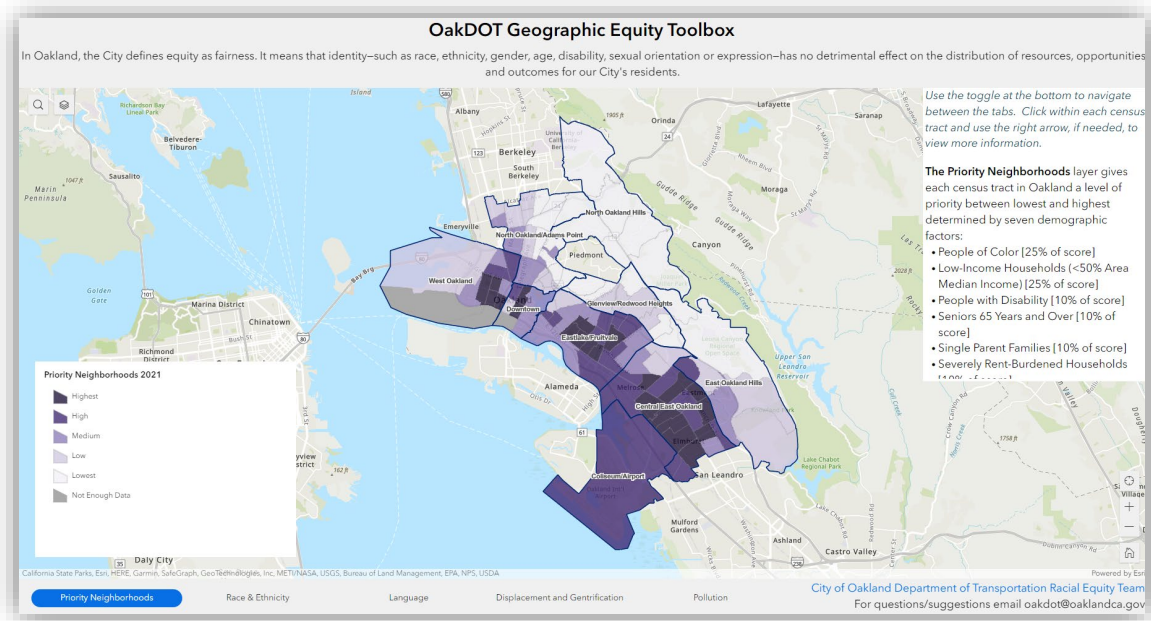
*some metrics are department-specific, such as road safety data

2. How is CIP scoring structured to promote equity in priority neighborhoods?

Equity, along with health and safety, is the highest score factor in the prioritization process. Equity is also a metric included in several other questions as detailed in the chart above. Projects receive points based on where they are located within the City and the corresponding equity metrics of that neighborhood; projects in higher equity neighborhoods receive higher points. [OakDOT's Geographic Equity Toolbox](#) gives each census tract in Oakland a level of priority between lowest and highest determined by seven demographic factors:

- People of Color [25% of score]
- Low-Income Households (<50% Area Median Income) [25% of score]
- People with Disability [10% of score]
- Seniors 65 Years and Over [10% of score]
- Single Parent Families [10% of score]
- Severely Rent-Burdened Households [10% of score]

Some of the highest priority neighborhoods are West Oakland, Eastlake/Fruitvale, and Central East Oakland. In the image below of the Geographic Equity Toolbox, priority neighborhoods are shown in purple, with darker purple shades representing the highest priority.



3. How does the ranking process determine which projects get funded and built?

The City uses the adopted prioritization criteria to create a ranked list of projects. The City seeks to deliver projects in the order that they are ranked. However, scoring thresholds for funding recommendations – how high a project needs to score to be recommended for funding – can vary based on the level of resources available from different funding sources.

While the same ranking criteria are used for all proposed CIP projects, the project's asset type (e.g. Buildings & Structures, Parks & Open Spaces, Transportation, etc.) determines its eligibility for different funding sources. Oakland's recent infrastructure bonds include dedicated "buckets," or allocations of funding, for specific capital asset types. For example, a building project would compete for different funding sources than a park project. Many projects must also seek external grant funding in order to be completed.

In summary, the timeline in which a project moves forward depends on funding source availability and terms, external grants, and delivery capacity, including that of staffing and external contracting. The City is committed to the CIP prioritization process, but it will take many years to deliver all high-scoring projects due to the aforementioned factors. The City is also working towards developing a 10-year capital plan to increase transparency around delivering capital projects and to reflect the multi-year efforts required to deliver capital improvements.

4. How might unfunded projects improve their scoring and chances for funding through the CIP?

CIP project scoring is done once every two years as a part of the biennial budget cycles. However, the City can provide some guidance now for the next cycle to help the supporters of unfunded projects get prepared or access support: Unfunded projects can often improve scoring by providing as much detail as possible as to the nature of their request and the improvements they would like to see. Public submissions sometimes do not score as highly as they might due to lack of detailed information in the submittal. To address this need, in the past two CIP cycles the City has hired community-based organizations to work directly with community members interested in submitting projects. With this assistance, participants have been better equipped to navigate the process, understand the components of a CIP submission, and provide as much detailed information as possible on their CIP request. Projects in equity priority neighborhoods have a strong advantage in the process, as consistent with the City's commitment to equity and investing in historically underserved communities. (Scoring and equity priority neighborhoods are further defined in the process below.)

5. Why are some projects funded even though their scores are relatively low?

While the City is dedicated to the CIP prioritization process, there are some exceptions when we need to perform work for urgent public safety needs. Examples of these exceptions include seismic bridge retrofits and emergency road repair in the event of landslides or other natural disasters. However, the City still scores these projects to understand where they fall within the prioritization framework.

6. How has the CIP scoring process evolved over time?

As of July 1, 2023, the City has completed three biennial CIP cycles using the adopted CIP prioritization process. With each cycle, the City has improved its scoring methodology to be more data-driven and objective, which has included updating and adding new data metrics. (See question 1 for more information related to metrics.)

Past CIP cycles have used a scoring cutoff of 75/100 to differentiate between unfunded and funded CIP projects. However, as described in question 3, funding source availability depends on the type of asset improvement, and therefore the funding cutoff may fluctuate for different projects. For example, a fire station project may be funded with a lower score than a parks project due to the availability of certain funding sources or funding "buckets." Overall, the City recommends to fund at least the top 25-35% scoring projects.