



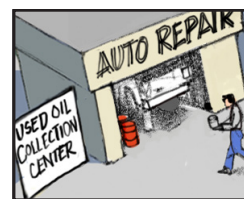
The Bay Is Closer Than You Think!

3 Now that you know what causes pollution, here are some simple solutions to prevent it.

CAR CARE



Wash your car at a car wash. Prevent leaks with proper maintenance, and clean up spills right away.



Recycle used motor oil and filters.

IN THE COMMUNITY



Always use the trash can, and put litter in its place.

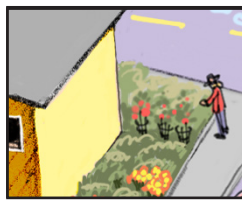


Pick up after your dog.

YARDS & GARDENS

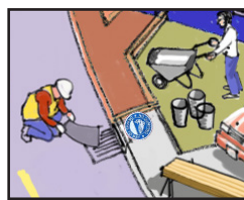


Don't overwater. Native and drought-tolerant plants help reduce water use.



Control pests and weeds with non-toxic alternatives to pesticides. Visit OurWaterOurWorld.org for help.

HOME MAINTENANCE



Make sure contractors keep debris and wash water off the street and out of storm drains.



Pour wash water into a drain that connects to the sewer, like a sink drain, not the street or gutter.



Volunteer at a local creek or beach cleanup.



Not all fish are safe to eat. See back for information on fishing advisories.



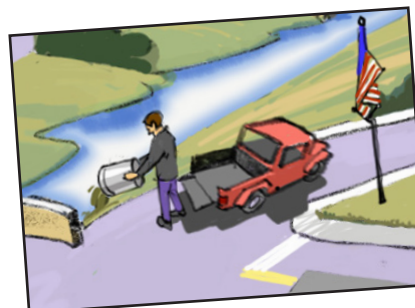
Capture rainwater to prevent runoff and conserve water.



Sweep, don't hose.



Take leftover paint and other household chemicals to a Hazardous Waste Facility.



Call 911 if a spill or illegal dumping is happening right now. If the spill is not occurring right now, report it to your city. See the "Report a Spill" section on the back side for more information.



Whether you live next to a creek or miles from one, you may be polluting it unintentionally, because all land is part of a watershed. A watershed is the land that water flows through on its way to a creek, delta, bay or ocean.

Everyday activities such as driving, gardening, or washing your car can affect the quality of the water in your watershed. Water from garden hoses, sprinklers, and rainfall washes materials such as motor oil, paint products, pet waste, and pesticides off yards, parking lots and streets into gutters and storm drains. From there, the contaminated water flows untreated into local creeks, wetlands, and the San Francisco Bay, where it harms fish and other wildlife.

You may live miles from San Francisco Bay but you can still pollute its waters.

Before you pour anything into the gutter or storm drain, or on a sidewalk or driveway, stop and think! Storm drains go directly into creeks and rivers...

...and through the wetlands to the Bay.

FRED & IZZY SAY:
You are the
solution to
water pollution!

Resources for Water Pollution Prevention

Water Pollution Prevention At Home

For more information on home maintenance, car care, yards and gardens, pest control and capturing rainwater, browse the "Residents" section of our website: www.cleanwaterprogram.org.

Less-Toxic Pest Control

For resources on how to manage ants, aphids, weeds and other home and garden pests without harsh chemicals, visit: www.OurWaterOurWorld.org.

For tips on hiring a pest control professional that uses less-toxic methods, visit: www.cleanwaterprogram.org/residents/pest-control-at-home.html.

Fishing Advisories

Not all locally caught fish are safe to eat. Read more about fishing and health on our website, www.cleanwaterprogram.org/residents/fishing-and-health.html.

Or check for advisories at oehha.ca.gov/fish/advisories.

Report a Spill

Call 911 if a spill or illegal dumping is happening right now. If the problem is not immediate, find the appropriate contact for your area at www.cleanwaterprogram.org/get-involved/report-a-spill.

Household Hazardous Waste Disposal

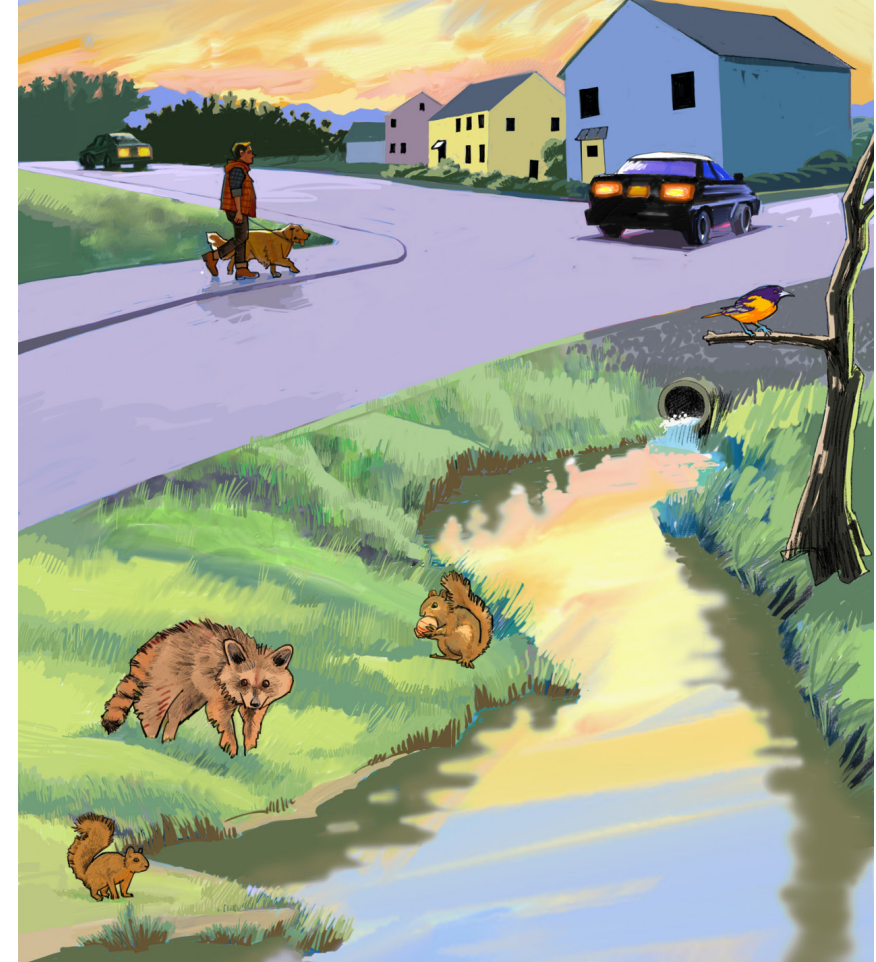
Please keep oil, paint, stains, cleaners and other household chemicals out of the garbage, recycling and compost carts.

Instead, drop these materials off at an Alameda County Household Hazardous Waste Facility. For locations and hours, call 1-800-606-6606 or visit www.household-hazwaste.org.

Videos

Visit the [Clean Water Program Alameda County YouTube Channel](#) to see how water pollution affects Fred & Izzy and to learn more about how pollution happens.

The Bay Begins at Your Front Door



You Can Prevent Pollution of Our Creeks, Wetlands & the Bay!



For more information visit us at:
cleanwaterprogram.org



cleanwater
PROGRAM

