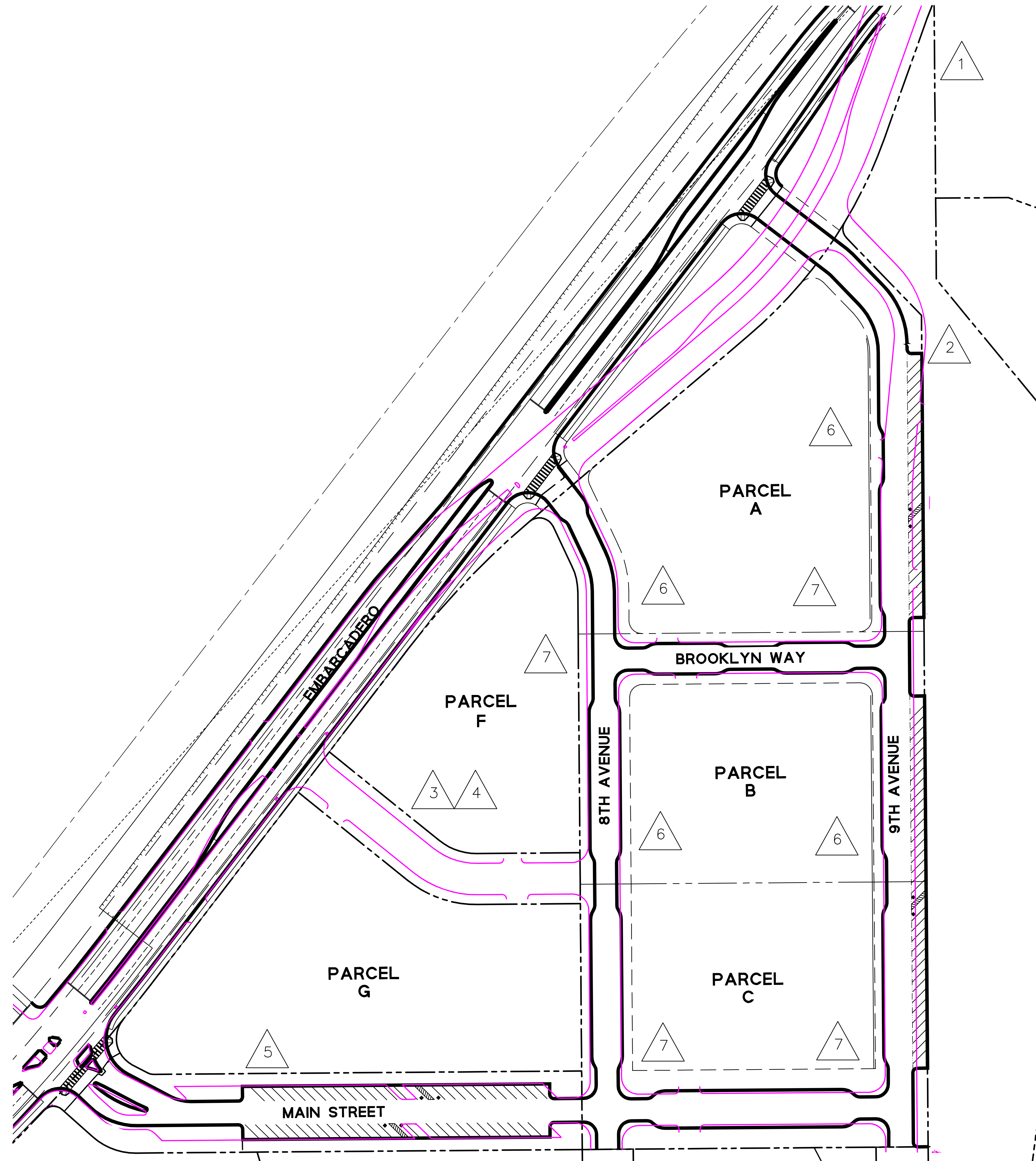


DRAWING NAME: K:\Eg\13\130175\DWG\EXHIBITS\14_09005_FDP_Titl\sheet - Copy\Comparison\VTM vs INTRACT.dwg
PLOT DATE: 10-23-14 PLOTTED BY: ston

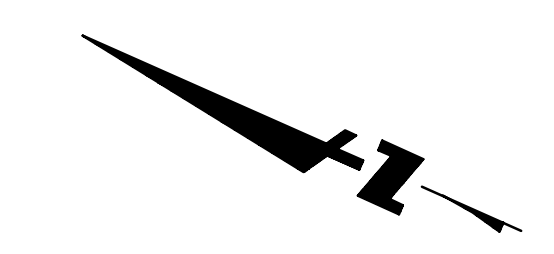


PLAN UPDATES FROM VESTING TENTATIVE TRACT MAP

- 1. ALIGNMENT OF EMBARCADERO ROAD: ADJUSTED TO MATCH EXISTING ROADWAY ALIGNMENT BECAUSE CALTRANS IS NOT INSTALLING RAMP UPGRADES WHICH REQUIRED EMBARCADERO TO BE SHIFTED AWAY FROM 1-880
- 2. PARKING AT SHORELINE PARK/9TH AVENUE: ADJUSTED FROM PARALLEL PARKING TO DIAGONAL PARKING TO MEET BCDC REQUIREMENT TO PROVIDE ADDITIONAL SHORELINE PARKING.
- 3. FORMER 7TH AVENUE: 7TH AVENUE WAS SHOWN ON THE VTTM BUT IS NOT INCLUDED IN THE PHASE 1 DEVELOPMENT PROJECT, AS IT HAS BEEN CONVEYED TO THE CITY OF OAKLAND.
- 4. PARCEL T BETWEEN F & G: 7TH AVENUE WAS PART OF THE STREET RIGHT OF WAY ON THE VTTM. THIS IS NOW A SEPARATE PARCEL, WHICH WAS DICTATED BY THE CONVEYANCE OF THIS PARCEL TO THE CITY OF OAKLAND.
- 5. MAIN STREET ORIENTATION AT CLINTON BASIN/EMBARCADERO: THE ALIGNMENT OF MAIN STREET SHIFTED SLIGHTLY TO ACCOMMODATE THE FINAL 1-880 STRUCTURAL UPGRADES AND OFF RAMP ALIGNMENT.
- 6. CURB LINES ALONG 8TH AVENUE AND 9TH AVENUE: THE FIRE CODE UPDATED SINCE THE VTTM APPROVAL REQUIRE A 26 FOOT WIDE FIRE LANE. THE CITY OF OAKLAND FIRE DEPARTMENT APPROVED THESE CURB BULB OUTS WHICH PROVIDE 26 FOOT FIRE LANES WHERE IT WAS FEASIBLE TO INSTALL THEM.
- 7. CURB LINES AT INTERSECTIONS: BULB OUTS AT THE PROJECT INTERSECTIONS WERE ADDED TO PROVIDE AN URBAN STREETScape WITH IMPROVED PEDESTRIAN SAFETY AND WIDER SIDEWALKS.

LEGEND:

- CURB LOCATIONS PER VESTING TENTATIVE TRACT MAP
- CURB LOCATIONS PER FINAL DOCUMENTS



Revisions	
No.	Date
	09/05/14
	10-23-14